



MULLER
AUTOMOTIVE

VEHICLE INSPECTION



Make Roads Safer and Cleaner



FRENCH MANUFACTURER OF VEHICLE INSPECTION AND WORKSHOP SOLUTIONS

MULLER HISTORY

Heir to BEM then MULLER BEM companies founded by Mr Bouteiller and Mr Muller in 1919, MULLER AUTOMOTIVE was created in 2022 when the Vehicle Inspection business unit of ACTIA Group was acquired.

MULLER, French leading manufacturer of Vehicle Inspection Solutions, is based in Chartres (28).

MANUFACTURER

With an ISO 9001-certified plant of 9000 m2 and processes, we produce in Chartres in a cutting-edge and high-performance industrial environment.

Our R&D department designs the mechanics, electronics and electrical functions and develops the software. We manufacture our own side slip testers, suspension and roller brake testers, as well as headlight testers, axle play detectors.

Petrol and diesel emission testing solutions complete our range of products. With our subsidiary specializing in industrial bodywork, we also design and manufacture mobile station solutions for light vehicles, heavy duty vehicles and motorbikes / 3-wheelers / Quads for our export markets.

MULLER is recognized for its know-how and expertise in the world of vehicle inspection and plays an active role within the FIEV and the French Ministry of Ecology in drafting the standards and rules for this market, which is a key factor for safe mobility.

CUSTOMER SERVICE AT THE HEART OF OUR BUSINESS

Our 20 sales representatives support customers from the beginning to the end in the implementation of their projects: customized quotations, sales promotion, on site pre-visits, presence at installation and support for training sessions.

Our after-sales team of 40 field technicians is supported by a hotline and call center in Chartres: reception, advice, diagnostics, installation, commissioning, training, testing maintenance and repair.

We offer also maintenance and service contracts for all our customers to control their productivity and protect their investments.

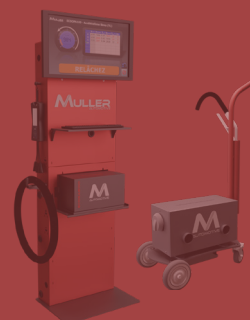
04

About us



12

Emission testers



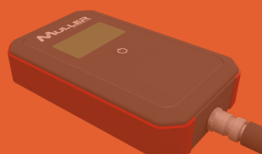
24

Headlight testers



30

Sound level meters



34

2, 3, 4 wheels test lane



36

LV test lane



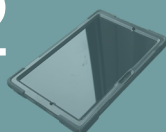
54

HV test lane



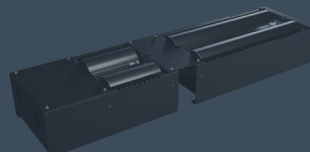
72

Accessories



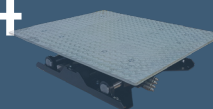
76

Speedometers



84

Axle play detectors (LV/HV)



90

Mobile stations



102

Lifts



118

Software



THE COMPANY

06



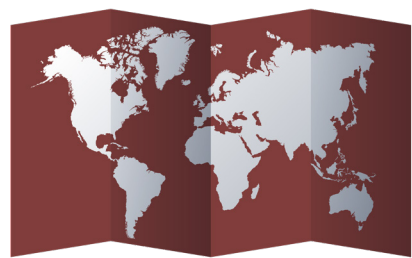
CHAIRMAN'S
MESSAGE

07



HISTORY

08



MULLER
GROUP

09



SERVICES

11



WEBSITE

10



CERTIFICATIONS



CHAIRMAN'S MESSAGE



Founded by Marcel Muller in 1919 (BEM MULLER), MULLER AUTOMOTIVE has evolved since its takeover in 2022 and established itself as one of the leaders in its field, combining tradition and innovation, to meet the growing needs in the world of the Automotive Periodic Technical Inspection market.

Present in more than 60 countries, with a network of specialized partners, and soon nearly 10 subsidiaries, the “Chartraine” company has more than 150 employees who know that thanks to a constant commitment, they strive to make the roads safer and cleaner, thus saving lives and promoting a sustainable future for generations to come.

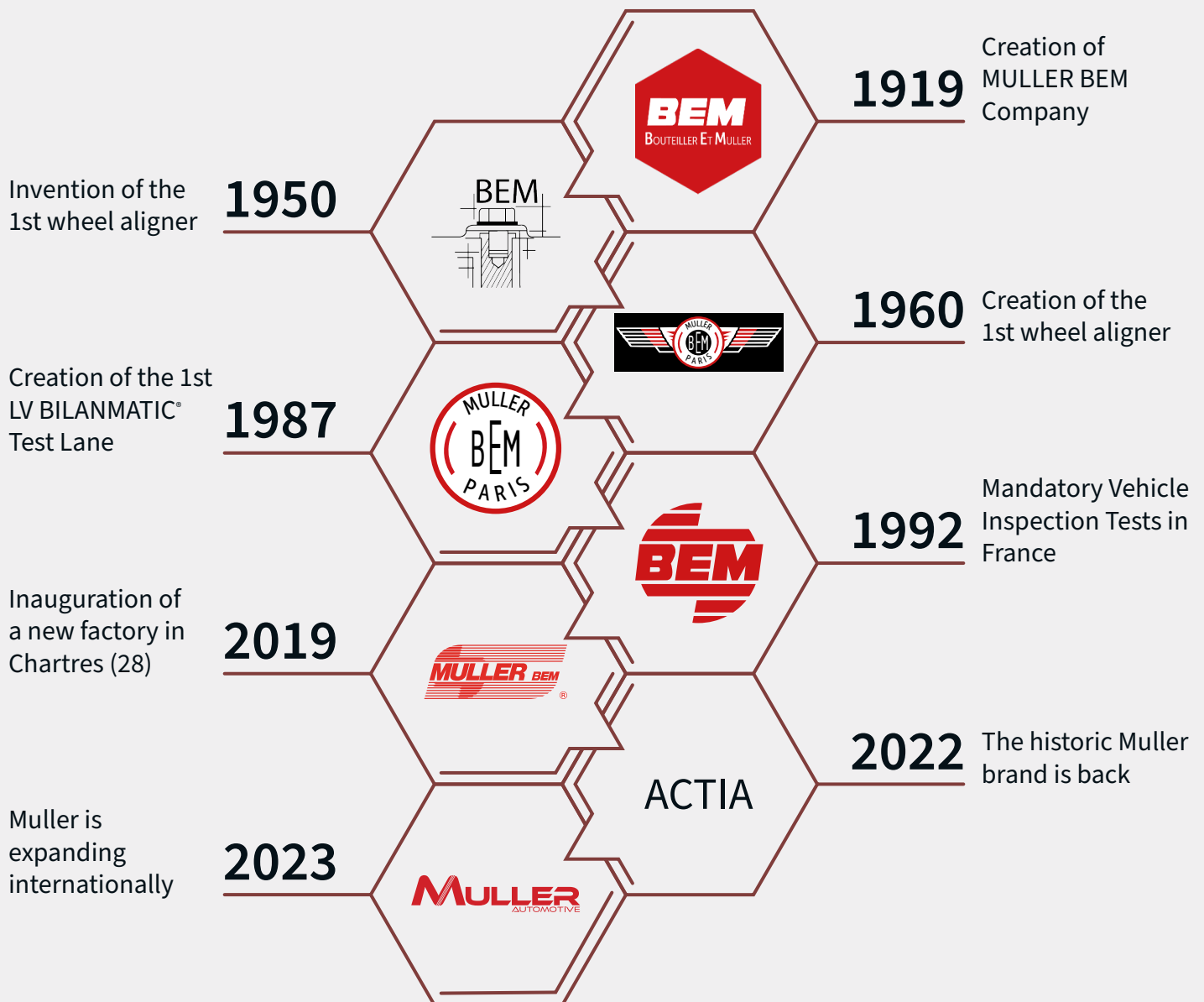
Every day, from Santiago to Abidjan, from Manila to Plymouth, from Kuala Lumpur to Riyadh, we develop and offer innovative solutions to meet the challenges of 21st century road mobility and the expectations of our Operator and Distributor customers.

Today, we want to keep Marcel Muller’s legacy alive and for the company to continue to grow, driven by the same quest for excellence that has always driven its founder.

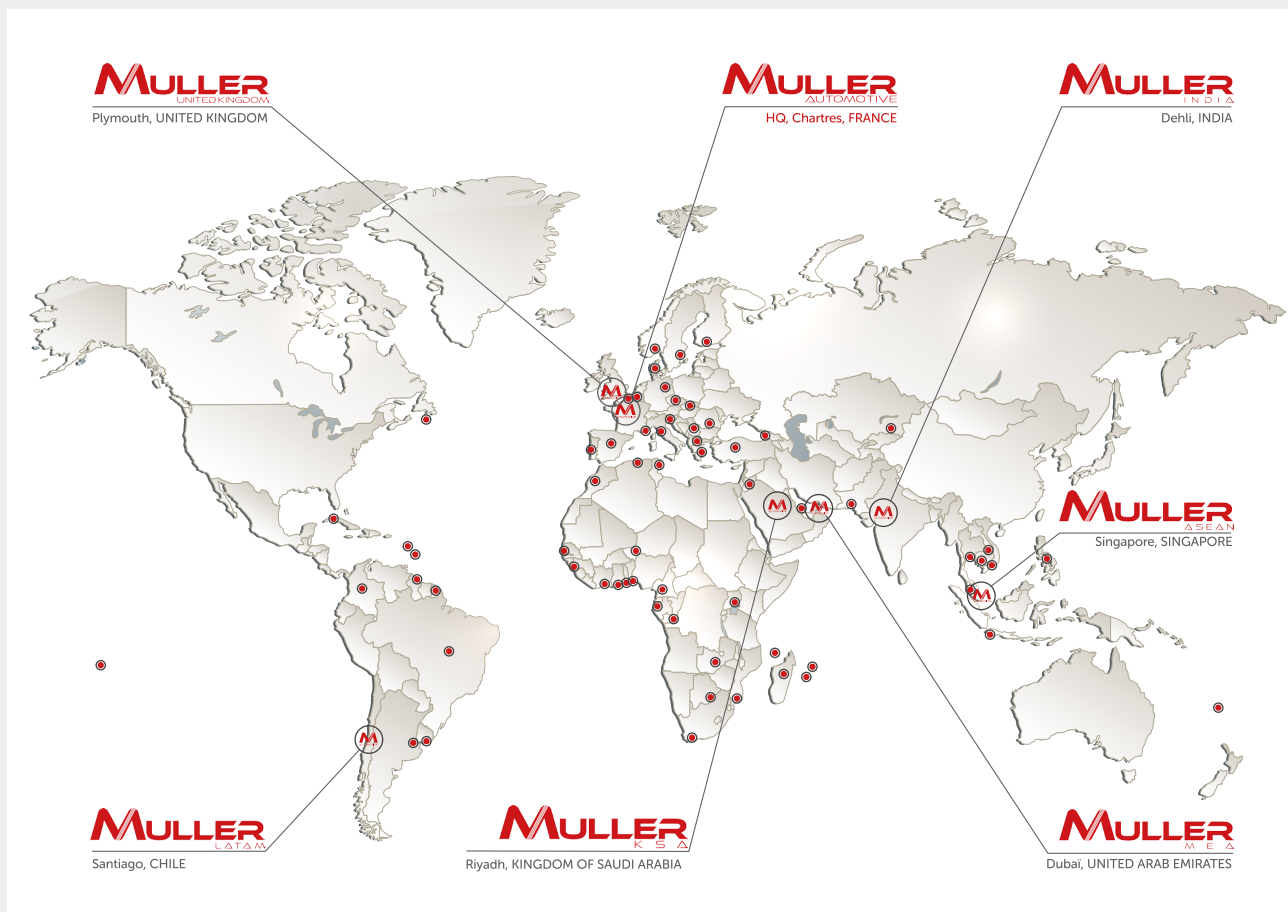
Benoît de Maynadier

HISTORY

Heir to **BEM** then **MULLER BEM** companies founded by Mr Bouteiller and Mr Muller in 1919 - **MULLER AUTOMOTIVE SAS** was created in 2022 when the Vehicle Inspection business unit of ACTIA Group was acquired.



MULLER GROUP



MULLER AUTOMOTIVE, HQ, CHARTRES



contact@mullerautomotive.fr

MULLER LATAM, SANTIAGO



contact@mullerlatam.com

MULLER ASEAN, SINGAPORE



contact@mullerasean.com

MULLER UK, PLYMOUTH



joinus@mullerautomotive.co.uk

MULLER ME, DUBAI



contact@mullerme.com

MULLER KSA, RIYADH



contact@mullerksa.com

MULLER INDIA, DELHI



contact@mullerindia.com

SERVICES

RESEARCH & DEVELOPMENT

A team of 10 engineers and IT specialists innovate, develop new products and solutions and improve existing ones.

MARKETING

A team of product managers and business developpers is at your entire disposal to promote all our solutions and work together with the sales team to develop the various distribution channels.

PURCHASING & SUPPLIES

Purchase and Procurement staff is constantly looking for the best raw materiels and supplies needed for our production.

PRODUCTION

A factory staffed by a large number of qualified workers manufacturing the Muller company products efficiently and respecting the highest quality standards.

LOGISTICS

This department manages the reception, handling, storage and shipping of the products.

SALES

A team of more than 20 sales representatives travels through France and the entire world to promote and sell our products and services and develop its customer base.

AFTERSALES

40 technicians, both hotline technicians and field technicians in France and Worldwide, ensure customer satisfaction once the equipment is installed and strenghten customer loyalty by improving the brand image.

QUALITY

The quality of our products and processes is a key factor to ensure that our customers are always supplied in the same way. This service ensures that our products and services meet quality standards, compliance with international regulations and norms and enhance customer satisfaction.

CERTIFICATIONS

GUARANTEED FRENCH ORIGIN



Our company has been awarded “Guaranteed French Origin” certification for all the equipment we manufacture in our factory based in Chartres (Headlight Testers, Control Cabinets, Side Slip Testers, Suspension, Roller Brake Testers, Axle Play Detector Plates, Speedometers,...) for all vehicle categories : LV, HGV, Motorcycles, 3-Wheelers, Quads.

This certification commits us to develop and manufacture products by using short supply chains, encouraging the selection of local suppliers and minimizing our environmental footprint.

ISO 9001



With ISO 9001 certification, MULLER AUTOMOTIVE manufactures over 90% of its vehicle inspection range in its Chartres factory. The process is fully controlled from design to manufacture of the equipment, ensuring high quality and reliable solutions at the end of the production line.

Our production unit covers almost 2000 m². Our production facilities give us total flexibility to meet quickly the different equipment configurations all over the world.

A SHOWROOM AND A TRAINING CENTER READY TO WELCOME YOU



■ RÉPUBLIQUE FRANÇAISE

La certification qualité a été délivrée par AFNOR Certification au titre de la catégorie d'actions suivantes : ACTIONS DE FORMATION

As a QUALIOPI-certified training center, we look forward to welcoming you to our factory in Chartres for a training session on all our range of products.

From Vehicle Inspection (Vehicle Inspection test lanes, Headlight Testers, Emission Testing Equipment) to Workshop Equipment (Wheel Aligners and Balancers, Tyre Chargers, Lifts, Air Conditioning Machines,...), all our products are showcased in an area of over 1000 m² for demos and training in real-life conditions.

OUR COMMITMENTS

In order to offer you a high-end range of products and services adapted to your needs, MULLER AUTOMOTIVE takes part alongside international organisations to the development of standards and regulations.



OUR APPROVALS

Your equipment complies with the applicable regulatory requirements and developments and MULLER AUTOMOTIVE has the experience to support you in your market.



WEBSITE

Today, in an increasingly interconnected world, a company's online presence is no longer an option, but a necessity. A Website is much more than a simple digital showcase, it is considered as an essential strategic tool for the success and growth of any worldwide company.

Explore our Website to find out more about our products, solutions, services and our commitment to a secure and sustainable mobility :

- **Vehicle inspection** : we manufacture Side Slip Testers, Suspension and Roller Brake Testers, as well as Emission Testing Solutions for petrol and diesel vehicles
- **Workshop equipment** : Discover our full range of Lifts, Wheel Balancers/Aligners, Tyre Changers and A/C Refill Stations
- **Innovation and quality** : With an ISO9001-certified production site in Chartres, we commit ourself to supply robust, reliable products and solutions designed by our mechanical, electronic and software R&D Departments.

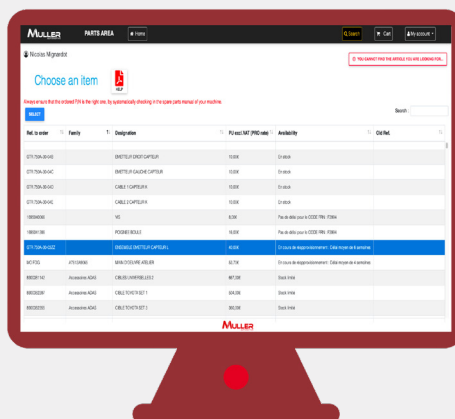


CUSTOMER AREA

MULLER AUTOMOTIVE has developed and made available a customer area : **www.espace-client.mullerautomotive.fr**. This portal is much more than just a website; it is a platform dedicated to serve and support our customers throughout their journey with us.

With personalised, secure access for each user, our customers can log on in complete confidence and have access to dedicated information to their needs and equipment.

- **Technical support and documentation** : The customer area provides an extensive library of technical documentation, including user manuals, troubleshooting guides and software updates. In addition, customers can submit online technical support requests, ensuring a fast and efficient response from our team of expert technicians.
- **Order and service management** : Our platform makes it easy to manage your orders and service requests. Customers can track the status of their orders and have access to their order history and plan maintenance tasks. This transparency and ease of access to information is essential for the efficient management of their equipment.
- **Metrology area** : Our customers can access all the metrological certificates they need for their activities
- **Communication and feedback** : the customer area is also a direct communication channel between Muller Automotive and its customers. We encourage our users to share their feedback and suggestions, so that we can continually improve our products and services. This close interaction is at the heart of our commitment to excellence and customer satisfaction.



EMISSION TESTING EQUIPMENT

14



GAS
ANALYSER

15



OPACIMETER

16

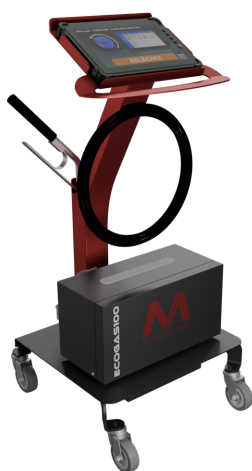


TACHOMETER

17



EOBD READER



18

CABINET



20

SOFTWARE



22

COMBINED

ECOGAS100

GAS ANALYSER



ECOGAS100 is the new Gas analyser MULLER AUTOMOTIVE designed for the pollution of petrol, LPG and CNG vehicles. The 4-gas analyser (CO, CO₂, HC, O₂), which is also 5-gas compatible (with the addition of a NO_x sensor), can be adapted to any type of environment and any type of legislation, whether for roadworthiness tests or garage diagnostics.

TECHNICAL DATA		ECOGAS100	
	MEASURING RANGE	RESOLUTION	
CO	0 - 9,99 % vol	0,01	
CO ₂	0 - 19,99 % vol	0,1	
HC	0 - 9999 ppm vol	1	
O ₂	0 - 25 % vol	0,01	
NO _x	0 - 5000 ppm vol	1	
Lambda	0,5 - 5	0,001	
RPM	300 - 9999 rpm	10	
Oil temperature	20 - 150 °C	1	

4 GAS ANALYSER

- MID type approval for Europe
- Power supply 230V 1ph
- Wired or Bluetooth connection (depending on configuration)
- 6 m sampling probe
- 5-gas compatible (addition of a cell for NO_x measurement)
- Full accessibility to mesh and coalescing filters

ACCESSORIES



See pages 16 to 17

SOFTWARE



See page 20

ECOOPA100

OPACIMETER



ECOOPA100 est l'opacimètre MULLER AUTOMOTIVE **dernière génération**, conçu pour le contrôle pollution des fumées des véhicules diesel. Il peut être connecté indifféremment à un PC ou à une tablette grâce à sa transmission Bluetooth, et permet comme l'analyseur de gaz, de réaliser des mesures en contrôle technique ou des accélérations libres pour identifier les défauts.



TECHNICAL DATA

ECOOPA100

	MEASURING RANGE	RESOLUTION
Opacity	0 - 99,99 m ⁻¹	0,1
Absorption coefficient	0 - 9,99 % vol	0,01
Tachometer	0 - 9999 rpm	10
Oil temperature	20 - 150 °C	1
Smoke temperature	20 - 400 °C	1

OPACIMÈTRE

- LNE approval for France and MID for Europe
- Power supply 230V 1ph
- Wireless Communication - Bluetooth
- Configurable with fix cabinet (VL version) or independent (PL version)
- Full accessibility to filters (magnetic plate)



Heated probe 3,50 m



LV probe 1,50 m

ACCESSORIES



See page 16 to 17

SOFTWARE



See page 20

ECORPM100

RPM DEVICE WITH CHARGER AND CONNECTORS



ECORPM100 is the new latest-generation RPM reader manufactured by MULLER AUTOMOTIVE. Fully autonomous battery powered and communicating via Bluetooth), it features a large colour screen. A signal reception gauge makes it easy for the user to find the best place to pick up the necessary information.

RPM DEVICE FUNCTIONS

This measurement device is distinguished by its ability to measure engine speed using several types of sensor :

- **Vibration sensor** : This sensor detects engine vibrations and converts them into engine speed data.
- **Induction clamp** (optional) : Used to measure the current induced by the motor, this clamp provides an accurate measurement of engine speed.
- **Battery clamps** : By connecting directly to the battery terminals, this clamp provides reliable engine speed measurement.

To measure the motor temperature, the device uses a wired temperature sensor that provides a direct, accurate measurement.

ADVANTAGES OF THE RPM DEVICE

- **Large 3.5' colour screen** : The device is equipped with a 3.5" inch colour screen that displays measurements in real time, making it easy to read and interpret the data.
- **Signal level display** : In addition to engine speed and temperature readings, the device displays the signal level, enabling users to check the quality of the chosen location.
- **Bluetooth communication** : Thanks to Bluetooth connectivity, the device can communicate with a variety of interfaces, making it easy to transfer and analyse data.
- **Wireless and portable** : The absence of wires and the device's portability mean it can be moved around easily without the need for an external power supply.

TECHNICAL DATA		ECORPM100	
	MEASURING RANGE		RESOLUTION
Tachometer	30 - 999	rpm	10
Temperature	20 - 200	°C	1

STANDARD EQUIPMENT



Vibration sensor



Battery clamps



Temperature sensor

ECOOBD100

EOBD DEVICE



ECOOBD100 is the new diagnostic device for the latest generation of on-board vehicle emission control systems manufactured by MULLER AUTOMOTIVE.

Like ECORPM100, the OBD reader is completely autonomous. It can be powered from the OBD socket or the cigarette lighter socket. It is fitted with an LED light to help you identify where to connect it.



EOBD READER FUNCTIONS

This device stands out for its innovative features :

- Automatic detection of light and heavy vehicle protocols
- Automatic reading and transmission of engine speed
- Automatic reading and transmission of engine temperature
- Reading of ECU data and storage of fault codes.

ADVANTAGES OF THE EOBD READER

- Easy to use: an integrated LED light makes it easy to locate the vehicle's OBD socket, even in low-light conditions
- Portability: the wireless OBD reader can be moved around easily without the need for an external power supply
- Bluetooth connectivity: Thanks to Bluetooth connectivity, the reader can communicate with a variety of interfaces, making it easier to transfer and analyse data

STANDARD EQUIPMENT



Test cap



External power
supply



Extension cable

SOFTWARE



See page 20

THE CABINET



ECOSHIELD is extending its range to suit all workshop configurations. A wide choice is available: Pre-equipped fixed cabinet or mobile solution with a trolley incorporating a tablet display and gas analyser, plus all related accessories.

TROLLEY FOR OPACIMETER

ROLLING CART

This new trolley is equipped with two large wheels, allowing the opacimeter to be easily moved on any type of surface, whether indoors or outdoors.

ERGONOMIC

The trolley is ergonomically designed for easy handling and transport of the device. Users will appreciate the comfort and ease of use.

POWER SUPPLY

The power supply of the opacimeter is hidden in a housing under the trolley, freeing up the maximum amount of space and making it as compact as possible.



TROLLEY FOR GAS ANALYSER

ROLLING CART

Whether or not it is equipped with a tray to accommodate a gas analyzer, this new trolley carries a tablet and its program, facilitating access to the data and functionalities of the measuring instruments.

ERGONOMIC

The trolley is equipped with a gas analyzer sensor storage tube and a hooking system to receive the 6 meters of probe. 2 ears on the sides allow it to also receive the RPM and OBD player.

POWER SUPPLY

The gas analyzer power supply is also hidden in a housing under the carriage, freeing up the maximum amount of space and making it as compact as possible.



FIXED CABINET FOR GAS ANALYSER

FIXED CABINET

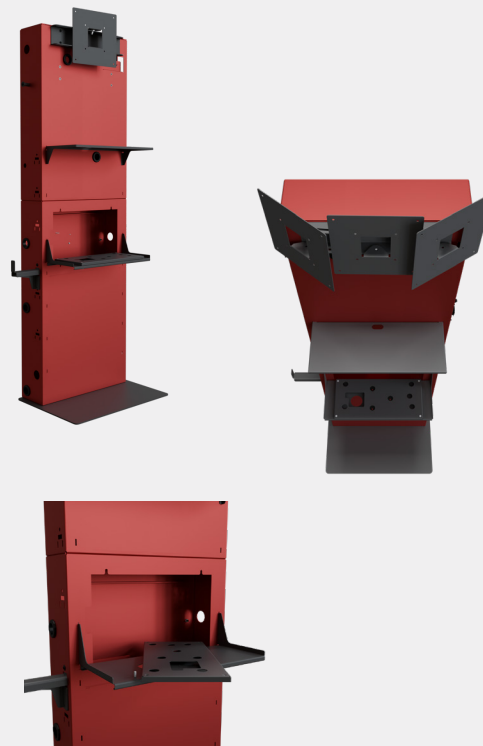
Fixed cabinet specially designed to accommodate the gas analyzer and all its accessories. This piece of furniture is scalable and will be able to accommodate the next evolutions of pollution measuring devices.

SCREEN TILT

The cabinet offers 3 different screen inclinations, so it can be adapted to any workshop configuration. A rolling cart option is available to make the furniture mobile if required.

GAS ANALYSER SHELF

A secure system allows the shelf supporting the gas analyzer to rotate so that all connections and filters are then fully accessible.



THE SOFTWARE



ECOSHIELD has a new software to measure the different gas and fumes according to the different regulations :

- Technical inspection mode
- Free measurement mode

ECOGAS100

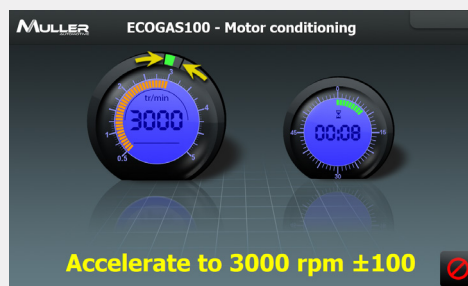
ECOGAS100

This software allows you to follow a regulatory procedure as well as to perform free acceleration for a better diagnosis.



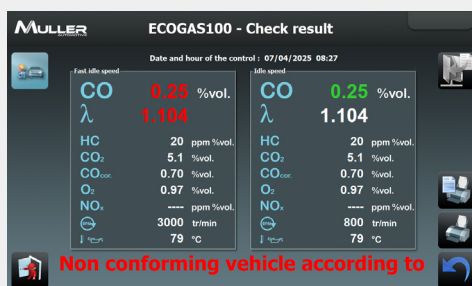
MEASUREMENT SCREEN

After the installation of the measuring accessory (OBD reader or RPM vibration reader), the temperature and engine speed information is clearly displayed, allowing acceleration to begin.



FINAL SCREEN

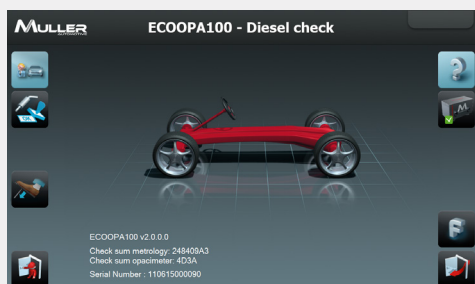
The final screen clearly displays all the data required by the various regulations before they are sent to the various authorities.



ECOOPA100

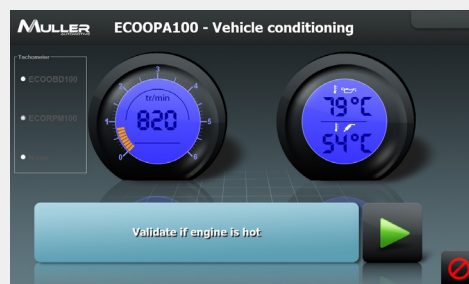
ECOOPA100

This software allows you to follow a regulatory procedure as well as to perform free acceleration for a better diagnosis.



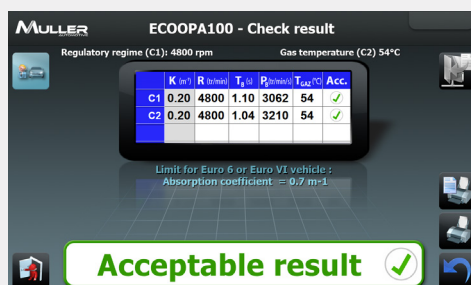
MEASUREMENT SCREEN

After the installation of the measuring accessory (OBD reader or RPM vibration reader), the temperature and engine speed information is clearly displayed, allowing acceleration to begin.



FINAL SCREEN

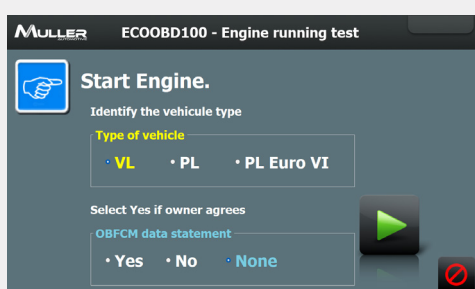
The final screen clearly displays all the data required by the various regulations before they are sent to the various authorities.



ECOBD100

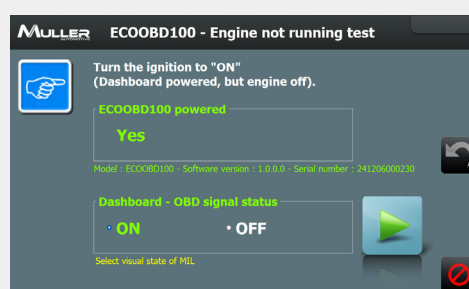
ECOBD100

User-friendly and intuitive interface allowing the user to be guided throughout the procedure.



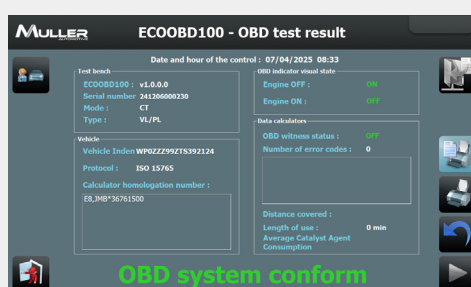
MEASUREMENT SCREEN

Automatic recognition of the different LV and HGV protocols.



FINAL SCREEN

The final screen clearly displays all the OBFCM data required by the various regulations before it is sent to the various authorities.



ANALYSERS

FIXED or MOBILE CABINETS VERSION



COMPOSITION	ECOGAS-FIXER	ECOGAS-FIXFR32	ECOGAS-FIXEXP	ECOGAS-FIXEXP32	ECOGAS-FIXEXPSI	ECOGAS100-MOBF	ECOGAS100-MOBEXP
Gas analyser - ECOGAS100	✓	✓	✓	✓	✓	✓	✓
Gas analyser probe 6 m	✓	✓	✓	✓	✓	✓	✓
RPM device - ECORPM100	✓	✓	-	-	-	✓	-
OBD device - ECOOBD100	✓	✓	-	-	-	✓	-
Fixed cabinet	✓	✓	✓	✓	✓	-	-
IT (PC, Keyboard, Mouse)	✓	✓	✓	✓	✓	-	-
27" screen	✓	-	✓	-	-	-	-
32" screen	-	✓	-	✓	-	-	-
Shelf trolley	-	-	-	-	-	✓	✓
Tablet 10"	-	-	-	-	-	✓	✓

FIXED or MOBILE CABINETS VERSION



COMPOSITION	ECOOPA100-FIXFRVL	ECOOPA100-FIXFRPL	ECOOPA100-FIXFR32VL	ECOOPA100-FIXFR32PL	ECOOPA100-FIXEXPVL	ECOOPA100-FIXEXPPL	ECOOPA100-FIXEXP32VL	ECOOPA100-FIXEXP32PL	ECOOPA100-FIXEXPSI	ECOOPA100-MOBFVL	ECOOPA100-MOBFPL	ECOOPA100-MOBEXP
Opacimeter - ECOOPA100	✓	✓	✓	✓	✓	✓	✓	✓	✓	✓	✓	✓
Rolling cart for opacimeter	✓	✓	✓	✓	✓	✓	✓	✓	✓	✓	✓	✓
1,50 m sensor	✓	-	✓	-	✓	-	✓	-	✓	✓	-	✓
3,50 m sensor	-	✓	-	✓	-	✓	-	✓	-	-	✓	-
RPM device - ECORPM100	✓	✓	✓	✓	-	-	-	-	-	✓	✓	-
OBD device - ECOOBD100	✓	✓	✓	✓	-	-	-	-	-	✓	✓	-
Fixed cabinet	✓	✓	✓	✓	✓	✓	✓	✓	✓	-	-	-
IT (PC, Keyboard, Mouse)	✓	✓	✓	✓	✓	✓	✓	✓	-	-	-	-
27" screen	✓	✓	-	-	✓	✓	-	-	-	-	-	-
32" screen	-	-	✓	✓	-	-	✓	✓	-	-	-	-
Shelf trolley	-	-	-	-	-	-	-	-	-	✓	✓	✓
Tablet 10"	-	-	-	-	-	-	-	-	-	✓	✓	✓

COMBINED

FIXED or MOBILE CABINETS VERSION



COMPOSITION	ECOSHIELD-FIXER	ECOSHIELD-FIXFR32	ECOSHIELD-FIXEXP	ECOSHIELD-FIXEXP32	ECOSHIELD-FIXEXPSI	ECOSHIELD-MOBFR	ECOSHIELD-MOBEXP
Gas analyser - ECOGAS100	✓	✓	✓	✓	✓	✓	✓
Gas analyser probe 6 m	✓	✓	✓	✓	✓	✓	✓
Opacimeter - ECOOPA100	✓	✓	✓	✓	✓	✓	✓
Rolling cart for opacimeter	✓	✓	✓	✓	✓	✓	✓
1,50 m sensor	✓	✓	✓	✓	✓	✓	✓
RPM device - ECORPM100	✓	✓	-	-	-	✓	-
OBD device - ECOOBD100	✓	✓	-	-	-	✓	-
Fixed cabinet	✓	✓	✓	✓	✓	-	-
IT (PC, Keyboard, Mouse)	✓	✓	✓	✓	✓	-	-
27" screen	✓	-	✓	-	-	-	-
32" screen	-	✓	-	✓	-	-	-
Shelf trolley	-	-	-	-	-	✓	✓
Tablet 10"	-	-	-	-	-	✓	✓



Fixed handset



Mobile handset

HEADLIGHT TESTERS



26

SMARTLYNX



28

664-4



664-7

SMARTLYNX

HEADLIGHT TESTER



Device dedicated to measure high / low beams and fog lights :

- Analysis by CMOS camera to control the latest generation of lights : Xenon, Halogen, LED
- Wide 7" colour touch screen



TECHNICAL DATA

SMARTLYNX

Battery	7,4 V / 13 A/h
Power supply	100 / 240 Vac - 1,2 A - 50 / 60 Hz
Power supply output voltage	12 V - 3 A
Operating temperature	from -5°C to 45°C
Storage temperature	from -15°C to 55°C
Relative humidity	< 98% non condensed
Range of vertical deviation	+3% to -6%
Range of vertical deviation (french procedure)	+2% to -4%
Light intensity	Lux / Kcd / 0,1 Kcd
Range of intensity measurement	0 to 200 lux / 0 to 125 000 cd
Accuracy	+/- 10%
Correction of the tilt (range)	from +1% to -1% (+1,75% to -1,75%)
Correction of the tilt (accuracy)	+/- 0,1%
Pitch correction range	from 2% to -2% (+3,5% to -3,5%)
Pitch correction range (accuracy)	+/- 0,1%

EASY TO USE

- Column fitted with a counterweight for easy movement of the optical unit to the required height (light vehicle, HV and 2-3 Wheelers compliant)
- Intuitive, user-friendly software interface with 7" touch screen for greater ease of use and easily readable results
- Camera-assisted positioning in front of the vehicle

QUICK AND ACCURATE

- High performance processor and operating system for real-time image processing
- Image analysis to the nearest pixel making SMARTLYNX the most advanced headlight tester on the market
- Camera - and - software - assisted centring on beams for faster adjustments
- Built-in inclinometer

ROBUST

- Metal optical unit
- Heat-cast cover
- IP43 classified unit against water and dust
- Connections protected by watertight flaps

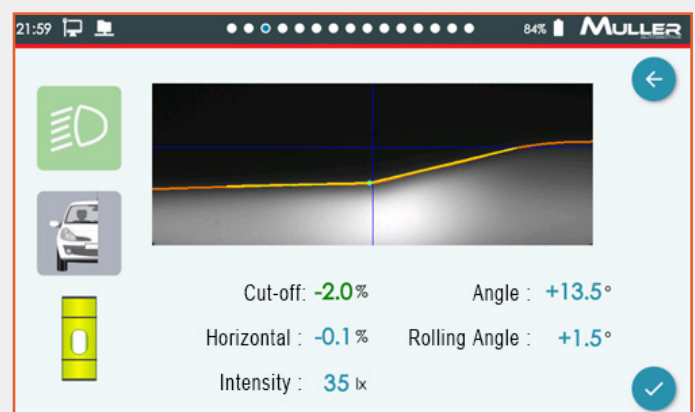
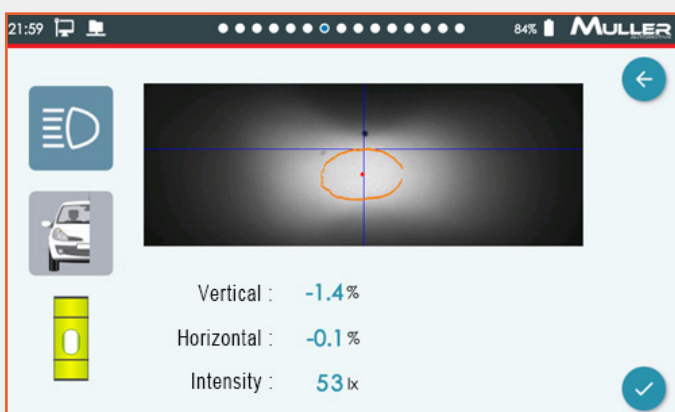
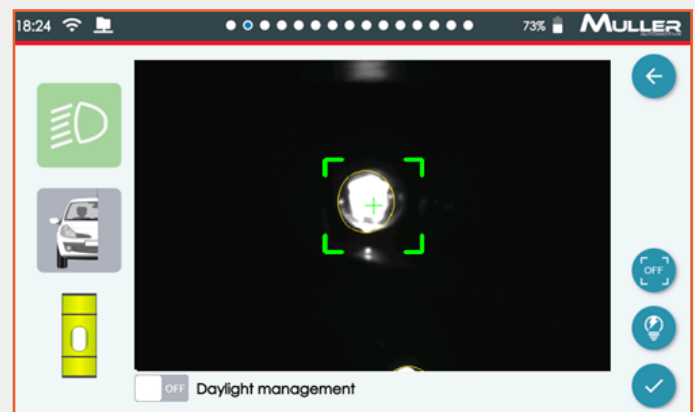
AUTOMATIC AND STAND ALONE

- 12 hours of autonomy
- Self-calibrating camera

18:35 63% MULLER

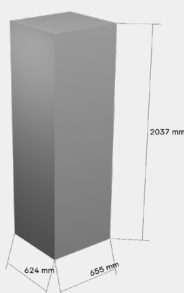
AJ-541-FM - VEHICLE COMPLIANT

Headlight type						
Side						
Cut-off / Vertical (%)	-1.6	-1.3	+1.0	-0.3	-2.5	-2.1
Horizontal (%)	+0.6	+0.8	+0.1	-1.0		
Angle (%)	+14.8	+15.1				
Rolling Angle (°)	+1.0	+0.9			+1.0	+1.3



PACKAGING

Parcel -
45 kg



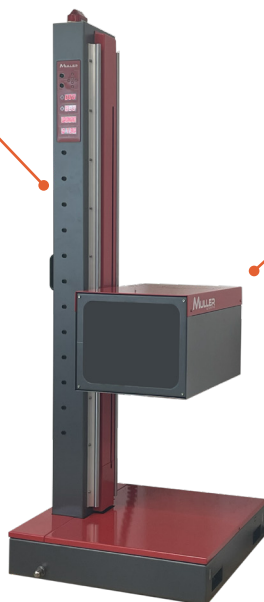
664-7

ROBOTIC HEADLIGHT TESTER



Wireless data
transmission

CCD camera



This robotic headlight tester allows automatic inspection without any manipulation of headlights.

It guarantees correct centering and ensures optimal readability of the beam. It allows the control and adjustment of optics on complex surfaces:

- Fully automatic test process
- Electronic and mobile robotic tool on 4 wheels
- Automatic data transfer
- Centering by CCD camera
- Compatible for light vehicles, heavy duty vehicles and motorcycles

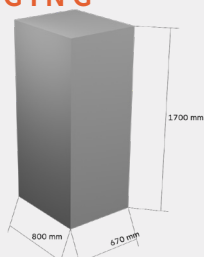
TECHNICAL DATA

664-7

Power supply	220V +/-10% 50Hz
Operating temperature	from -5°C to 40°C
Storage temperature	from -15°C to +55°C
Relative humidity	< 90%
Dipped beam range of measurement	from +4% to -5,6% from +40cm/10m to -56cm/10m
Lateral measurement range	from +5,6% to -5,6% from +56cm/10m to -56cm/10m
Accuracy	+/- 32 mm / 10 m
Light intensity measurement	Candela
Range of measurement	0 to 120 000 cd
Accuracy	10%
Height measurement	350 à 1 400 mm (+/- 10 mm)
Height measurement accuracy	≤ ± 10%
Measurement distance	from 80 cm to 100cm

PACKAGING

Parcel -
130 kg



INCLUDED

Rail movement kit - 5m

664-4

MANUAL HEADLIGHT TESTER



This headlight tester measures and checks all types of headlights. It incorporates electronics for automatic data transfer with Bilanmatic®.

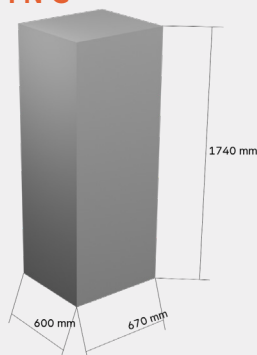
- Results displayed on LCD screen
- Displays the orientation of low and high beam
- Photodiode measurement of light intensity
- Laser aiming and centring or mirror and rail alignment
- Right or left-hand drive version
- Mains or vehicle battery powered



TECHNICAL DATA	664-4
Power supply	12 V
Measurement range	0 cm - 10 m / 40 cm - 10 m
Tolerance	+/- 3%
Min. height measurement	250 mm
Max. height measurement	1 400 mm
Intensity measurement range	0 - 240 lux / 25 m (150 Kcd)

PACKAGING

Parcel -
30 kg



OPTION

Ref. 664-120	Laser alignment kit
Ref. 664-121	Rail kit
Ref. 664-122	Mirror kit

SOUND LEVEL METER



SONO-C1.....	31
DIGICON-DS-357.....	31
SLM.50.....	32

SONO-C1

SOUND LEVEL METER CLASS 1



- The SONO-C1 sound level meter is designed for use with all types of noise measurement applications.

The device comes with 10 metres of cable and a tripod for conducting exhaust noise measurements at a distance from its processing unit. The Class 1 solution complies with standard IEC 61672 and guarantees data acquisition with impeccable metrological quality. With its multitask design, it concentrates high-performance and simplicity in a single device. It also features a high-definition, sunlight viewable colour display.

Multi-com capable, the user can take control of the sound level meter remotely via a simple web browser. The sound level meter features a built-in web server offering access to all its configuration and measurement functions.



TECHNICAL DATA	SONO-C1
Measuring range	21 dB to 138 dB (A) / 26 dB to 138 dB (C) / 31 dB to 138 dB (Z)
Reference frequency	31,5 HZ / 12,5 kHz
Operating temperature	-10°C / +50°C
Connection	Ethernet : RJ45 100 Mb/s mode DHCP
Power supply	Rechargeable battery and mains power supply
Autonomy	24 hours

DIGICON-DS-357

SOUND LEVEL METER CLASS 2



- DS-357 is a high performance conforms to international IEC61672 Class 2 Integrating Sound Level Meter. It may also survey: SPL(Lxyp), Lxmax, Lxmin, Lxeq, SEL (LAE), Lcpeak, RT60, three kind of at the same time frequency weighting (A, C, Z) and three kind of at the same time weighting (F, S, I) may simultaneously survey many kinds of appraisal target, the dynamic range is bigger than 100 dB, it does not need to select the measuring range when doing measurements, the operation is simple.

Applications : Evaluation of environmental noise, Measurements of noise at workplaces, Assessment of product noise.



TECHNICAL DATA	DIGICON-DS-357
Microphone	1/2-inch Electret condenser microphone
Measuring range	30 dB to 130 dB (A) / 35 dB to 130 dB (C) / 40 dB to 130 dB (Z)
Reference frequency	31,5 Hz - 8 kHz
Operating temperature	5°C / 40°C
Power supply	4 AA Alkaline bateries
Autonomy	30 hours

SLM.50

SOUND LEVEL METER CLASS 2 FOR 2/3 WHEELERS -
QUADS VEHICLE INSPECTION



The SLM50 sound level meter, developed by MULLER AUTOMOTIVE, is a CLASS 2 sound level meter complying with CDC8 index B technical specifications (French regulations), enabling the sound level of 2/3 Wheelers - Quads vehicles to be measured.

This device is available in two versions : SLM.50 and SLM-TAB.

COMPOSITION OF SLM50

- a software compatible with current emission testing devices or can be managed with a tablet
- a waterproof measurement unit powered by AA batteries or rechargeable batteries
- an omnidirectional microphone protected by a windscreen
- a class 1 calibration device
- a tripod equipped with a template for positioning the microphone. It is fitted with a precise template to ensure perfect positioning of the device
- a high-frequency acquisition device compatible with the engine speed acquisition module
- an inductive sensor

SOUND LEVEL METER UNIT

- 15 days continuous working autonomy
- transmission of the sound level data through a secure Bluetooth connection
- efficient and wireless communication of measurements
- reliable results day after day thanks to the calibration device



ACCESSORIES

Sound level
meter unit



Microphone +
1 windscreen



Calibrator
device



Induction clamp



HF sensor



Tripod



SOFTWARE

This software, designed to be both user-friendly and easy to learn, can be easily adapted to the environment of your ACTIGAS emission testing solution or your tablet when using it as a stand-alone solution.

Step by step, you will navigate easily through the various phases of the measurement tests, ensuring accurate, reliable results in the shortest possible time.



TECHNICAL DATA	SLM50-SONO
Microphone	Prepolarized 1/2 inches
Measuring range	40 - 130 dBA
Reference frequency	1 kHz
Operating temperature	-10°C to 50°C
Connection	Bluetooth 5.1
Power supply	3 x AALR06 or AAHR06 batteries
Autonomy	15 hours continuous use
TECHNICAL DATA	SLM50-CAL
Frequency	1kHz +/- 1%
Level generated	94 dB +/- 0,2 dB
Distortion	< 2%
Battery	1 x 9V
Autonomy	15 hours continuous operation
Dimensions	ø 48 x H135 mm

2 SOUND LEVEL METER VERSIONS

SLM.50



SLM.50-TAB



DESIGNATION	REFERENCE	SLM.50	SLM.50-TAB
Tablet	TABSLM		✓
RPM module	AT1133045		✓
Class 2 Sound level meter	SLM50-SONO	✓	✓
Class 1 calibration device	SLM50-CAL	✓	✓
Sound level meter tripod	SLM50-CAL	✓	✓
Software	SLM50-SW	✓	✓
High-frequency antenna	SLM50-HF	✓	✓
Induction clamp	AMAT1023034	✓	✓

2, 3, 4 WHEELS TEST LANE



BRAKE BENCH - MOTORCYCLE.....	35
BRAKE BENCH - 3 WHEELERS & QUAD.....	35

51000

BRAKE TESTER - MOTORCYCLE

**51100**

BRAKE TESTER - 3 WHEELERS & QUAD

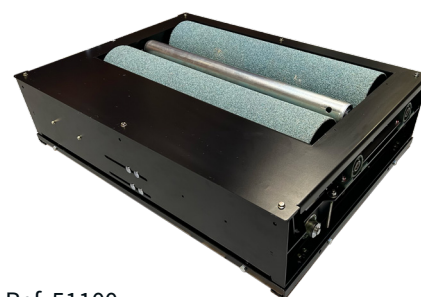
Surface-mounted for the podium version or recessed, with or without clamps, secured by a railing system, the 51000 model (for two wheels) is a motorcycle brake tester.

The 51100, the long version of the 51000, is an additional bench that can be coupled to the 2-wheelers bench, allowing all 2, 3 and quad vehicles.

Numerous options (type of rollers, with or without weighing, with brake motor, small side rollers) are available for sale and enhance the equipment.



Ref. 51000



Ref. 51100

TECHNICAL DATA	51000	51100
Passage capacity	1 000 daN	
Weighing capacity	600 daN	
Braking force (tangent to the roller)	300 daN	
Adhesion coefficient	dry > 0,9 / wet > 0,6	
Roller diameter	204 mm	
Rollers length between axle	368 mm	
Motor power supply	3 kW / 400 Vac / Three-phase	
Rotational speed of the rollers	> 5 km/h	
Capacity of the test wheels	From 250 mm to 700 mm	
Roller indicator diameter (4 signals/turn)	80 mm	
Roller length	350 mm	950 mm
Working length (without lateral rollers)	390 mm	990 mm
Working length (with lateral rollers, without clamps)	390 mm	980 mm
Working length (with lateral rollers, with clamps)	330 mm	
Dimension (L x l x h)	890 x 740 mm x 290 mm	1 200 x 740 x 290 mm
Weight (version with weighing, motor-brake)	140 kg	210 kg
Minimum / maximum path (inside / outside) without lateral rollers	220 mm / 1 600 mm	
Minimum / maximum path (inside / outside) with lateral rollers	240 mm / 1580 mm	

LIGHT VEHICLE TEST LANE

44



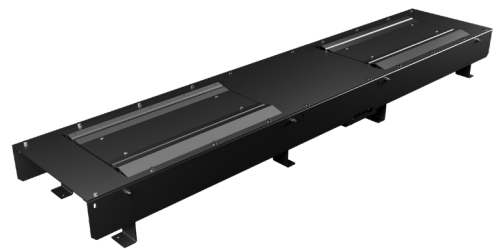
TEST LANE

46



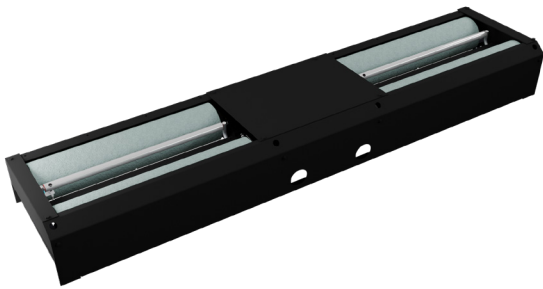
SIDE SLIP
TESTER

50



SUSPENSION
TESTER

54



ROLLER BRAKE
TESTER

72



ACCESSORIES

LV TEST LANE

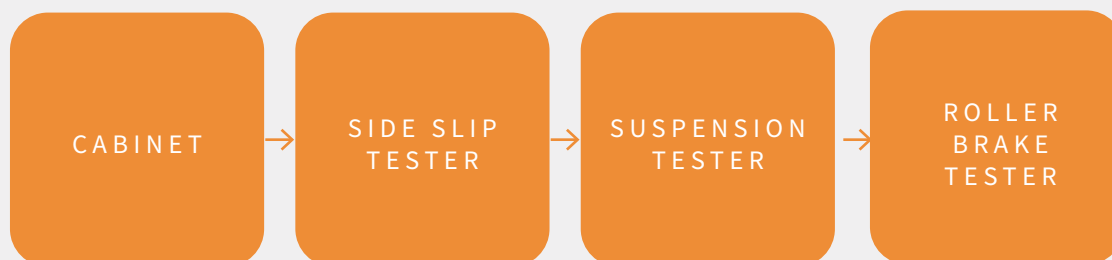


A COMPLETE LV TEST LANE.....	39
MOTORCYCLE & LV CABINET.....	39

SOFTWARE VERSION 10000 Ref. AM1004R04XAEJZ



SOFTWARE VERSION 10000 Ref. 1004R04XAEJZ



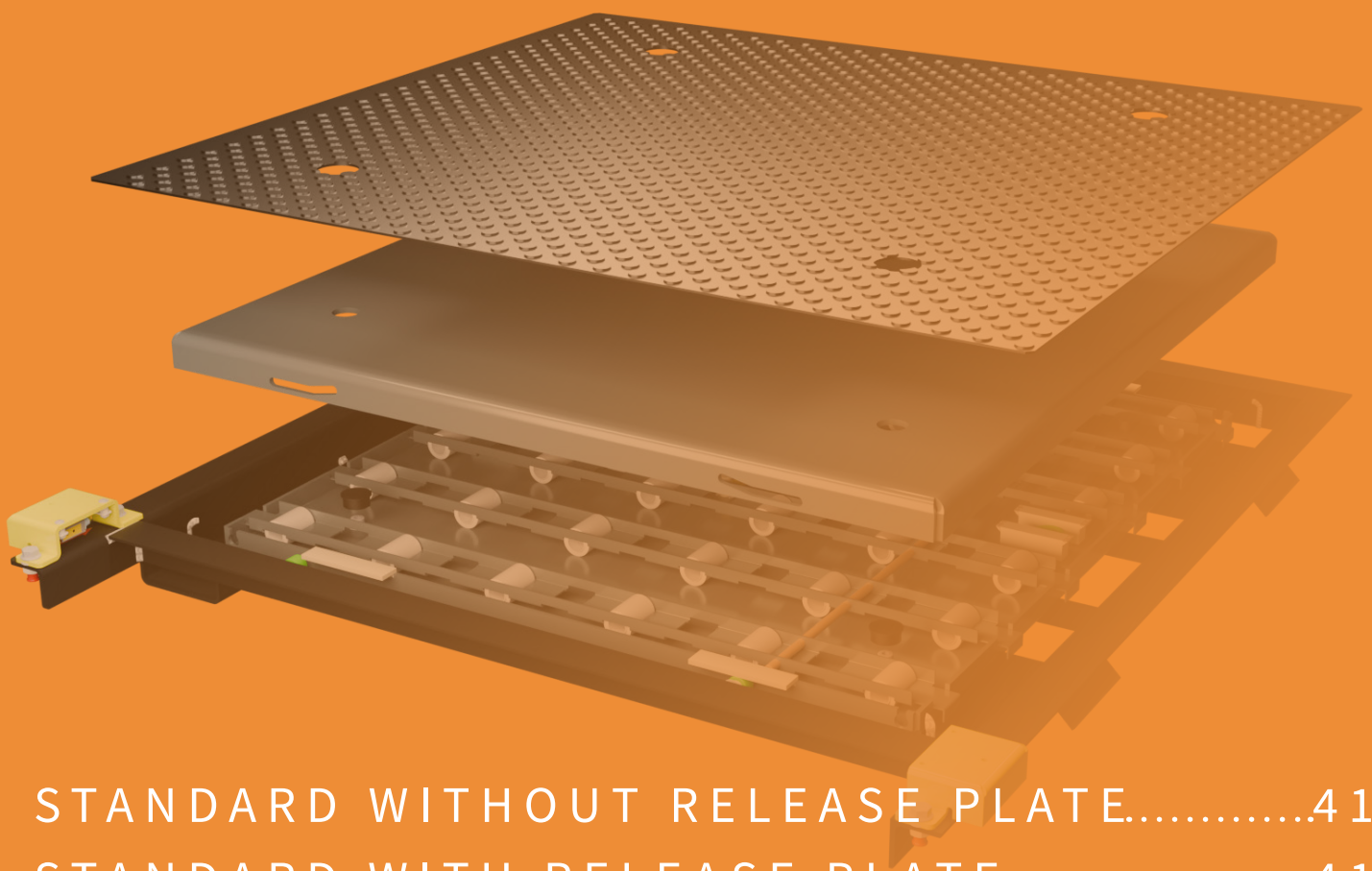
543XX

MOTORCYCLE & LV CABINET

- Secure control cabinet with emergency stop and reset button
- 27" HD tilt and turn screen
- Central processing unit with Windows operating system
- Multilingual interface (French, English, Spanish, German, Portuguese, Turkish...)
- Intuitive software incorporating country-specific procedures.
- Digital communication measurement by acquisition module for reliable and secure measurement
- Connection through LIVESTREAM, GIEGLAN, OTCLAN and ASANET protocols



SIDE SLIP TESTER



STANDARD WITHOUT RELEASE PLATE.....	41
STANDARD WITH RELEASE PLATE.....	41
WIDE WITH RELEASE PLATE.....	42
WIDE WITHOUT RELEASE PLATE.....	42
FRAMES.....	43
EXIT DETECTION SENSOR.....	43

44100-D11

STANDARD SIDE SLIP TESTER WITHOUT RELEASE PLATE



44100-D12

STANDARD SIDE SLIP TESTER WITH RELEASE PLATE

The 44100 side slip tester range provides optimum control of the measurement of a vehicle's slip as it passes over the plate. This operation is the first step in checking the vehicle's geometry during a vehicle inspection test.

The slip value obtained is used to measure the trajectory deviation of a vehicle axle. This measurement is expressed in m/km or mm/m.



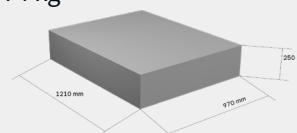
*without release plate

TECHNICAL DATA	44100-D11	44100-D12
Release plate	without	with
Plates	1	2
Plate dimension (without layer)	600 x 780 mm	600 x 980 mm
Mat dimension	740 x 800 mm	740 x 1 020 mm
Thickness	35 mm	
Pit dimension	670 x 820 mm	670 x 1 045 mm
Depth	34 mm	
Displacement	± 17 mm/m (± 1 mm) or ± 20 m/km	
Drive-by capacity	2 000 kg	
Number of moving rollers	40	60
Connection	to the MODACQ of the roller brake tester, suspension tester and other	
Power supply	12 Vdc	
Weight	39 kg	52 kg

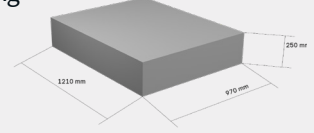
The extended range includes a version fitted with a release plate. This accessory frees the axle from any stresses associated with driving the vehicle before taking the measurement. This plate is positioned in front of the measurement plate, preparing the vehicle for good measurement conditions.

PACKAGING

Parcel 44100-D11 - 74 kg



Parcel 44100-D12 - 84 kg



44100-L-D21

WIDE SIDE SLIP TESTER WITHOUT RELEASE PLATE



44100-L-D22

WIDE SIDE SLIP TESTER WITH RELEASE PLATE



*with release plate

The 44100 side slip tester range provides optimum control of the measurement of a vehicle's slip as it passes over the plate. This operation is the first step in checking the vehicle's geometry during a roadworthiness test.

The slip value obtained is used to measure the trajectory deviation of a vehicle axle. This measurement is expressed in m/km or mm/m.

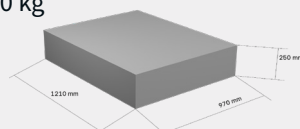
The WIDE version of the side slip tester allows vehicles with 'wide' tracks (such as camper) to pass through.

TECHNICAL DATA	44100-L-D21	44100-L-D22
Release plate	without	with
Plates	1 plate	2 plates
Plate dimension (without layer)	750 x 800 mm	750 x 1050 mm
Mat dimension	890 x 820 mm	890 x 1090 mm
Thickness	36 mm	
Pit dimension	820 x 840 mm	820 x 1115 mm
Depth	35 mm	
Displacement	± 17 mm/m (± 1 mm) or ± 20 m/km	
Drive-by capacity	2000 kg	
Number of moving rollers	36	48
Connection	to the MODACQ of the roller brake tester, suspension tester and other	
Power supply	12 Vdc	
Weight	53 kg	71 kg

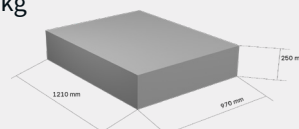
The extended range includes a version fitted with a release plate. This accessory frees the axle from any stresses associated with driving the vehicle before taking the measurement. This plate is positioned upstream of the measurement plate, preparing the vehicle for good measurement conditions.

PACKAGING

Parcel 44100-L-D21 - 90 kg



Parcel 44100-L-D22 - 100 kg





- The 44100 range is available in several versions :
- Standard version for measuring most of light vehicles
 - 'WIDE' version for vehicles with wider axles
 - A choice of models with or without release plate
 - As an option, an additional exit sensor to check the speed at which the vehicle passes over the measuring plate.

FRAMES

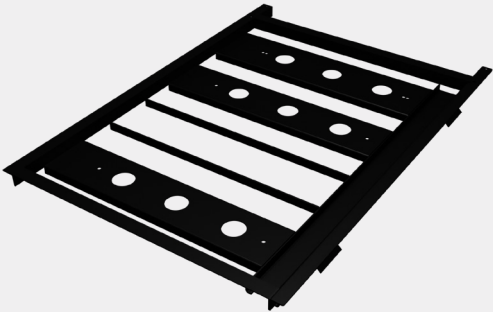


The use of the MULLER AUTOMOTIVE pit frame is mandatory to obtain a flatness of < 2 mm in the pit and guarantee the correct passage of the connection cables.

FOR LV and WIDE

With exit sensors	
Ref slip plate	Ref frame
Ref. 44100-D11	Ref. AM123934
Ref. 44100-D12	Ref. AM123934-D
Ref. 44100-L-D21	Ref. AM123936
Ref. 44100-L-D22	Ref. AM123936-D

Without exit sensor	
Ref slip plate	Ref frame
Ref. 44100-D11	Ref. AM123935
Ref. 44100-D12	Ref. AM123935-D
Ref. 44100-L-D21	Ref. AM123937
Ref. 44100-L-D22	Ref. AM123937-D



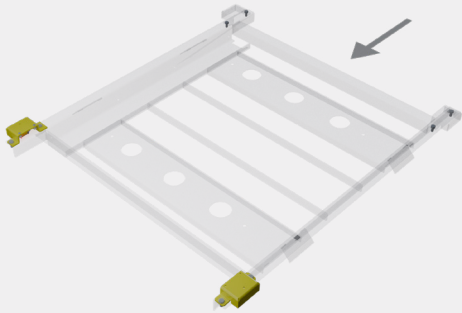
Frame with release plate



Frame without release plate

EXIT DETECTION SENSOR

Ref. 123943-1

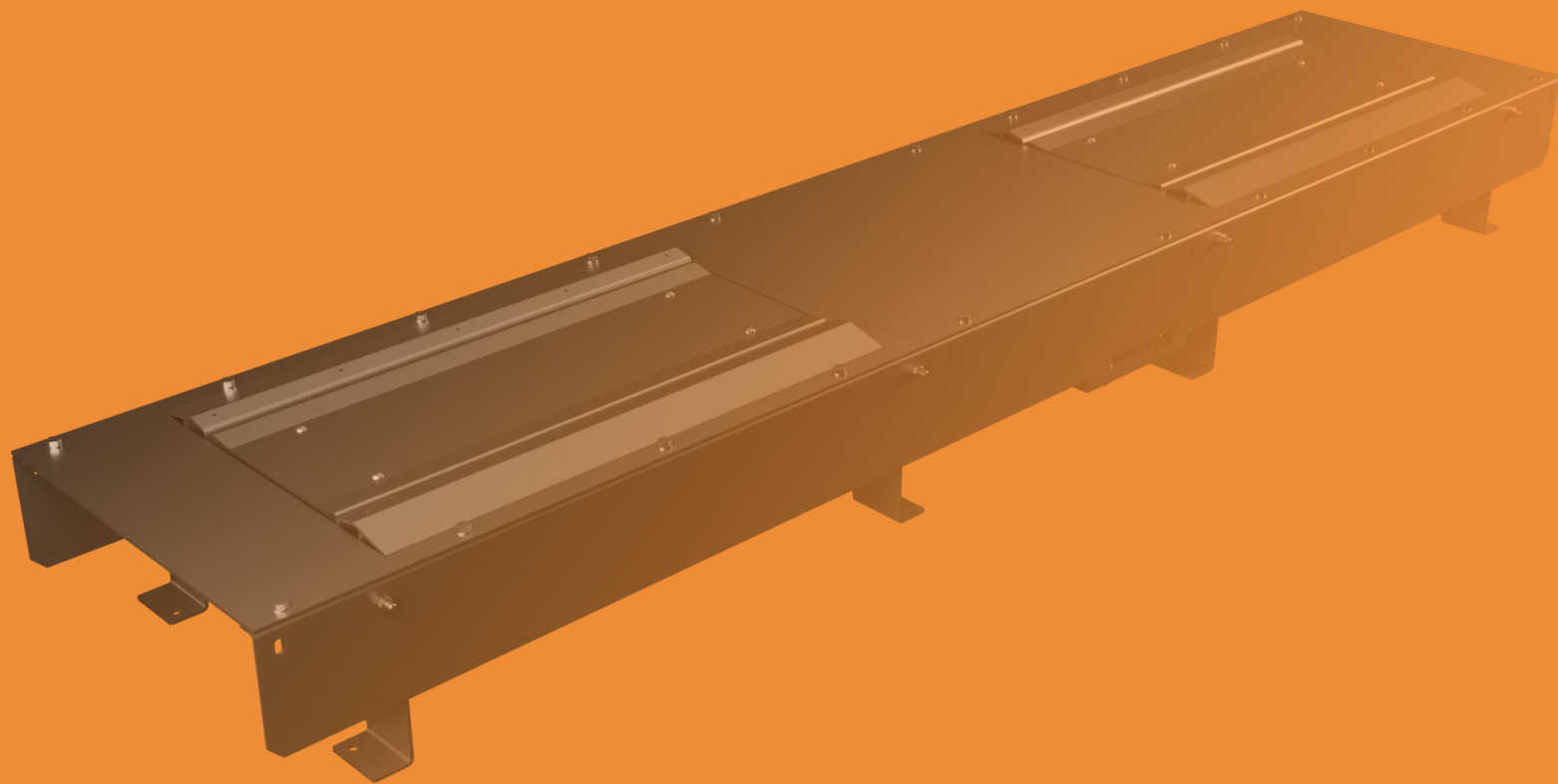


Frame with release plate and exit sensor



Passage detection at the exit of the side slip plate enables to measure the speed of the vehicle when it passes over the plate to be analyzed during the test.

SUSPENSION TESTER



STANDARD PAINTED CHASSIS.....	45
STANDARD ZINC PLATED CHASSIS.....	45
WIDE PAINTED CHASSIS.....	46
WIDE ZINC PLATED CHASSIS.....	46
FINISHING PAINTED CHASSIS.....	47

46600

STANDARD PAINTED CHASSIS



46600-Z

STANDARD ZINC PLATED CHASSIS

This bench measures the suspension asymmetry. It guarantees excellent measurement repeatability and detailed analysis of the suspension damping on the left and right sides of the vehicle. It can be used for static measurements on vehicles with 4 000 kg axles and dynamic measurements on vehicles with 2 500 kg axles.

Its high-power motor prevents slip and limits premature wear of the drive belts.



*painted chassis

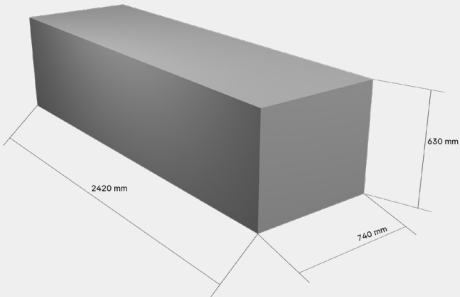
TECHNICAL DATA	46600	46600-Z
Finishing	painted chassis	zinc plated chassis
Dimension	2 300 x 600 x 280 mm	
Weight	300 kg	
Minimum / Maximum clearance	800 / 2 100 mm	
Roll over capacity	4 000 kg	
Weighing capacity (per axle)	3 000 daN	
Dynamic testing capacity	2 500 daN	
Excitation amplitude	+/- 3 mm	
Standard method	EUSAMA	
Motor power	3 kW	

OPTION

Ref. 122857-2VD	Wide track kit
Ref. 46620-R	Suspension tester with automatic covering plates

PACKAGING

Parcel -
353 kg



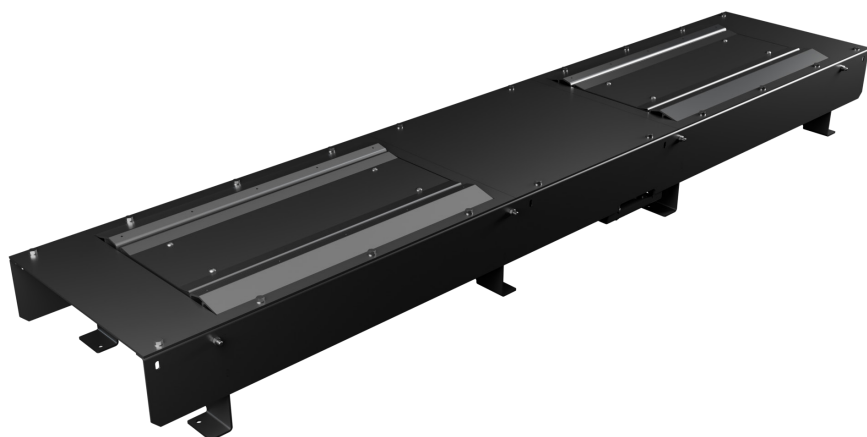
The wide track kit for 46600 suspension tester increases the clearance on each side of the bench, allowing a vehicle with a maximum clearance of 2270 mm to pass.

55950

WIDE PAINTED CHASSIS

**55950-Z**

WIDE ZINC PLATED CHASSIS



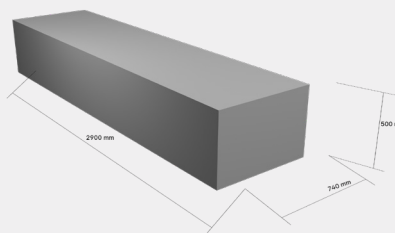
Reliability and accuracy of measurement concentrated in a wide range of suspension testers to enable inspection of the entire fleet of vehicles and light commercial vehicles, from the smallest car to the largest vehicles.

- Assistance with front/rear positioning of wheels on platforms
- Wheel by wheel weighing
- EUSAMA measurement method
- EXPERT measurement mode to determine the state of wear of each shock absorber

TECHNICAL DATA	55950	55950-Z
Finishing	Painted chassis	Zinc plated chassis
Dimension	2 920 x 600 x 280 mm	
Weight	320 kg	
Minimum / Maximum clearance	800 / 2 500 mm	
Roller over capacity	3 500 kg	
Weighing capacity (per axle)	3 000 daN	
Dynamic test capacity	2 500 daN	
Excitation amplitude	+/- 3 mm	
Measurement method	EUSAMA / EXPERT	
Motor power	2,2 kW	

PACKAGING

Parcel -
370 kg



The processing and digitisation of measurements as close as possible to the sensors and the multiplexing of data transmission ensure the quality of the suspension analysis.

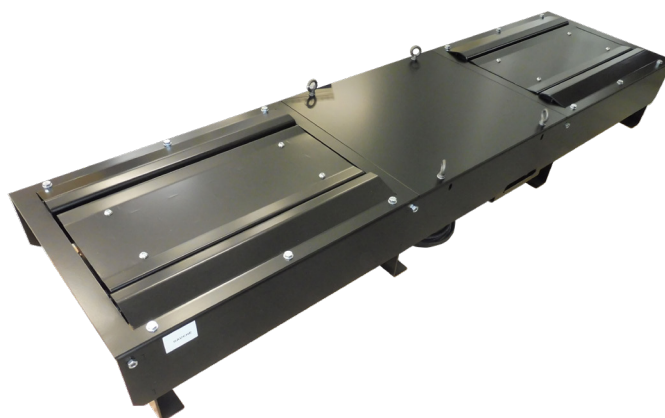
The data is processed to determine left and right adhesion efficiency, calculate axle suspension asymmetry and assess shock absorber quality.

55900

STANDARD PAINTED CHASSIS
EXPERT MEASUREMENT METHOD

Reliability and accuracy of measurement concentrated in one tester. Includes EXPERT measurement mode to check shock absorber wear.

- Assistance with front/rear positioning of wheels on platforms
- Wheel by wheel weighing
- EUSAMA measurement method
- EXPERT measurement mode to determine the state of wear of each shock absorber



*painted chassis

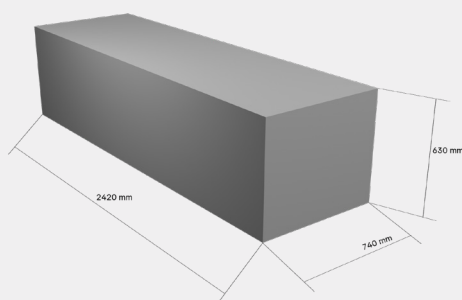
TECHNICAL DATA

55900

Finishing	painted chassis
Dimension (L x l x h)	2 320 x 600 x 280 mm
Weight	280 kg
Minimum / Maximum clearance	800 / 2 200 mm
Roller over capacity	3 500 kg
Weighing capacity (per axle)	3 000 daN
Dynamic test capacity	2 500 daN
Excitation amplitude	+/- 3 mm
Measurement method	EUSAMA / EXPERT
Motor power	2,2 kW

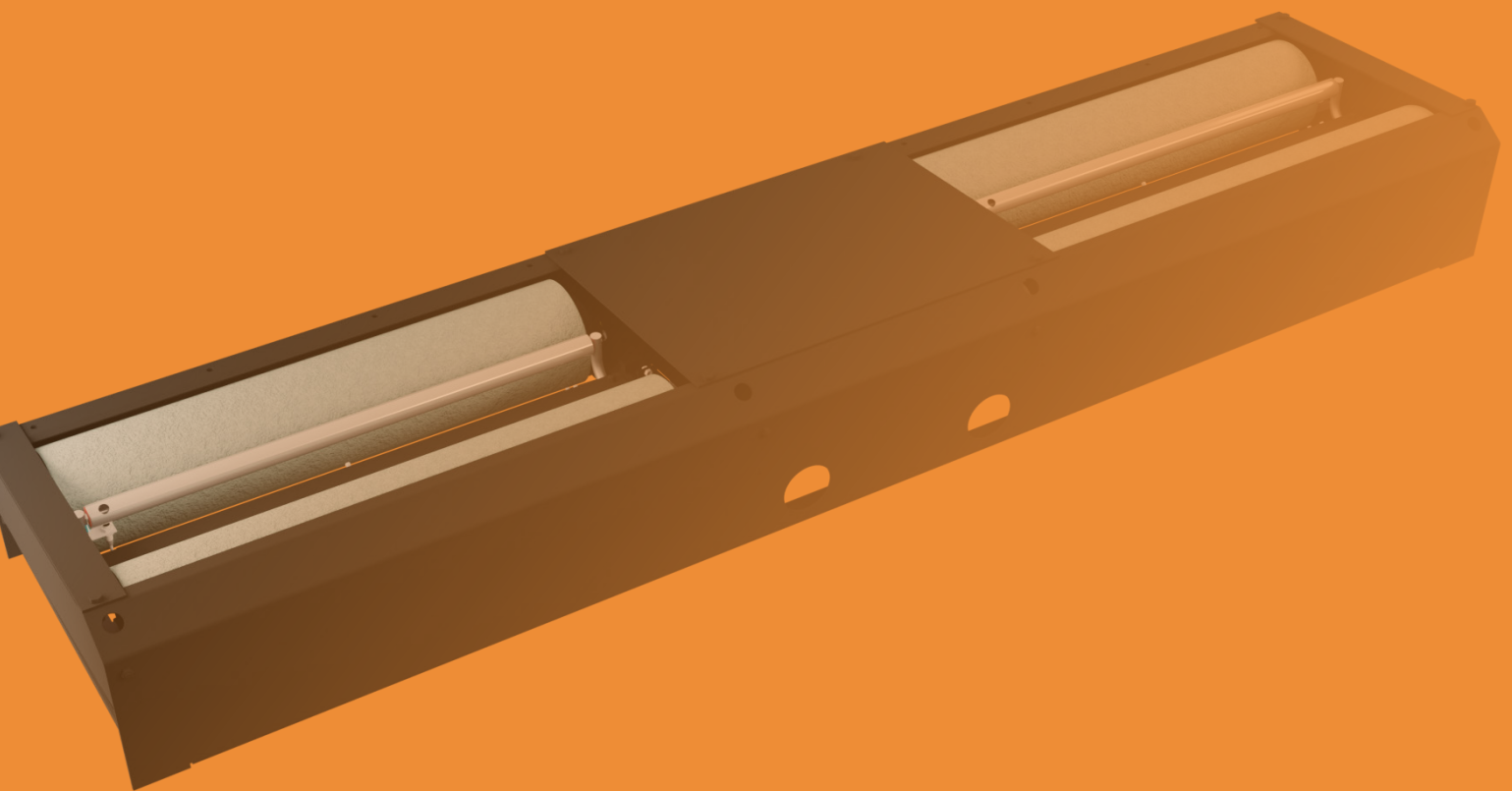
PACKAGING

Parcel -
353 kg



The flat measuring plate allows the vehicle to adapt perfectly to real-life conditions. Positioning the vehicle's wheels is made easier by the ridges at the ends of the measuring plate.

BRAKE TESTER



STANDARD MONOBLOC CHASSIS.....	49
WIDE MONOBLOC CHASSIS.....	50
WIDE BIBLOC CHASSIS.....	51
STANDARD FLAT MONOBLOC CHASSIS.....	52
WIDE FLAT MONOBLOC CHASSIS.....	53

43300

STANDARD MONOBLOC PAINTED CHASSIS



43300-Z

STANDARD MONOBLOC ZINC PLATED CHASSIS

This brake tester complies with the main international standards :

- **Performance** : the rear rollers are raised by 35 mm to increase braking forces and prevent vehicle ejection when maximum braking effort is reached.
- **Reliability** : this bench has a high axle load and powerful motors to minimise wear
- **User-friendliness** : it has a motor with an electro-magnetic brake to make it easier to remove the vehicle once the axle check has been completed



*zinc plated chassis

TECHNICAL DATA	43300	43300-Z
Finishing	painted chassis	zinc plated chassis
Dimension	2 320 x 650 x 285/335 mm	
Weight	420 kg	
Minimum / Maximum clearance	800 / 2 270 mm	
Axle load capacity	4 000 kg	
Roller diameter	> 200 mm	
Maximum braking force	2 x 750 daN at speed 5,5 km/h	
Motors power	2 x 4,7 kW	
Roller coating	Epoxy / Silica	
Adhesion coefficient	dry > 0,8 / wet > 0,6	
Raised rear rollers	+ 35 mm	

SAFETY

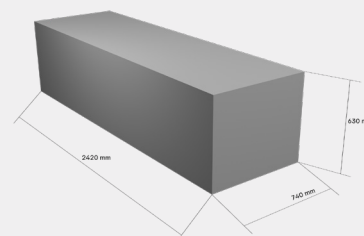
To prevent the motors from accidentally starting outside the control phases, the safety of the control rollers is ensured by disconnection via microswitches connected to the safety board.

OPTION

Ref. 100460-MUX	Weighing sensor KIT
Ref. 100519-2VD	Wide track kit

PACKAGING

Parcel -
522 kg



43350

WIDE MONOBLOC PAINTED CHASSIS



43350-Z

WIDE MONOBLOC ZINC PLATED CHASSIS



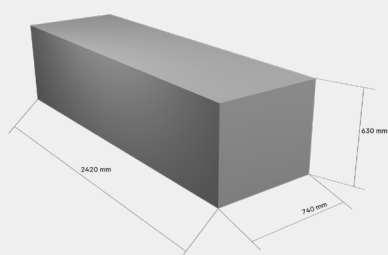
This bench has the same technical characteristics as the 43300 version.

Combined with the 55950 series of suspension bench, it completes the range of 'WIDE' testing benches.

TECHNICAL DATA	43350	43350-Z
Finishing	painting chassis	zinc plated chassis
Dimension	2 920 x 650 x 285/335 mm	
Weight	530 kg	
Minimum / Maximum clearance	800 / 2 800 mm	
Axle loaded	4 000 kg	
Roller diameter	> 200 mm	
Maximum braking force	2 x 900 daN at 4,3 km/h	
Motors power	2 x 4,7 kW	
Roller coating	Epoxy / Silica	
Adhesion coefficient	dry > 0,8 / wet > 0,6	
Raised rear rollers	+ 35 mm	

PACKAGING

Parcel -
520 kg



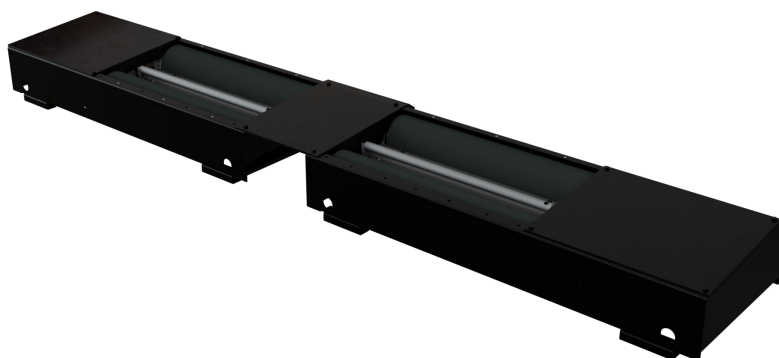
43350BB

WIDE BIBLOC PAINTED CHASSIS



The 43350 bibloc brake bench is derived from the 43350 monobloc bench. Its main advantage is that it adapts to all clear-space configurations.

Depending on the track configuration chosen, the bibloc bench can accommodate vehicles with a minimum width of up to 130 mm and a maximum width of up to 2,800 mm.



TECHNICAL DATA

43350BB

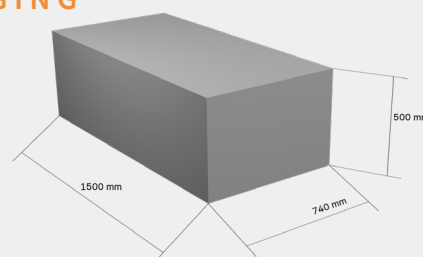
Finishing	painting chassis
Dimension	1 785 x 650 x 285/335 mm
Weight	530 kg
Minimum / Maximum clearance	130 mm / 2 800 mm
Axle load	4 000 kg
Roller diameter	> 200 mm
Roller length	983 mm
Maximum braking force	2 x 900 daN at speed 4,3 km/h
Motors power	2 x 4,7 kW
Roller coating	Epoxy / Silica
Adhesion coefficient	dry > 0,8 / wet > 0,6
Raised rear rollers	+ 35 mm

OPTION

Ref. 100460-MUX Weighing sensor KIT

PACKAGING

2 x Parcel -
250 kg



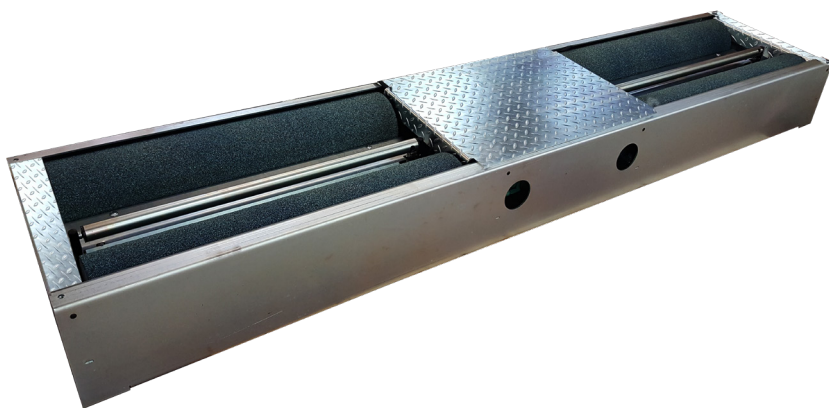
43800

STANDARD FLAT MONOBLOC PAINTED CHASSIS



43800-Z

STANDARD FLAT MONOBLOC ZINC PLATED CHASSIS



*zinc plated chassis

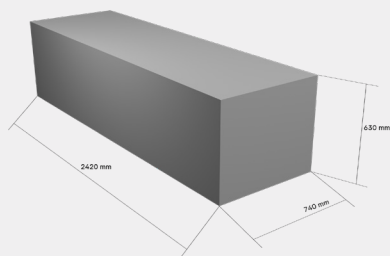
Designed with a reinforced 4T structure, the 43800 bench allows overloaded vehicles to pass through.

Like all the other braking benches in the range, the rollers are automatically locked by electromagnetic braking to facilitate vehicle exit.

TECHNICAL DATA	43800	43800-Z
Finishing	painting chassis	zinc plated chassis
Dimension	2 320 x 650 x 280 mm	
Weight	410 kg	
Minimum / Maximum clearance	800 / 2 270 mm	
Axle loaded	4 000 kg	
Roller diameter	> 200 mm	
Maximum braking force	2 x 750 daN at speed 5,5 km/h	
Motors power	2 x 4,7 kW	
Roller coating	Epoxy / Silica	
Adhesion coefficient	dry > 0,8 / wet > 0,6	
Raised rear rollers	0 mm	

PACKAGING

Parcel -
520 kg



43850

WIDE FLAT MONOBLOC PAINTED CHASSIS

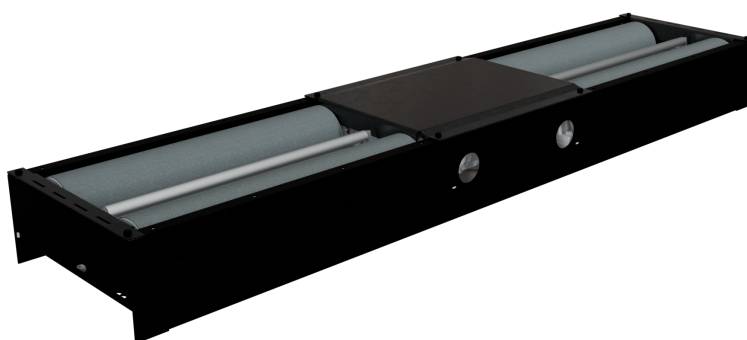


43850-Z

WIDE FLAT MONOBLOC ZINC PLATED CHASSIS

The 43850 braking bench allows vehicles with 'WIDE' axle (motor home type) to pass through.

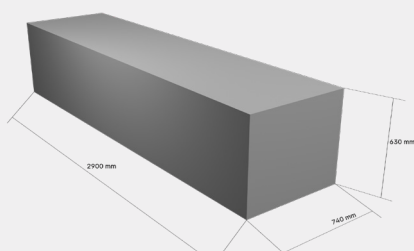
The rollers are automatically blocked to facilitate vehicle exit. The roller coating provides maximum grip in both dry and wet weather conditions.



TECHNICAL DATA	43850	43850-Z
Finishing	painting chassis	zinc plated chassis
Dimension	2 920 x 650 x 280 mm	
Weight	515 kg	
Minimum / Maximum clearance	800 / 2 800 mm	
Axle loaded	4 000 kg	
Roller diameter	> 200 mm	
Roller length	983 mm	
Maximum braking force	2 x 900 daN at speed 4,3 km/h	
Motors power	2 x 4,7 kW	
Roller coating	Epoxy / Silica	
Adhesion coefficient	dry > 0,8 / wet > 0,6	
Raised rear rollers	0 mm	

PACKAGING

Parcel -
520 kg



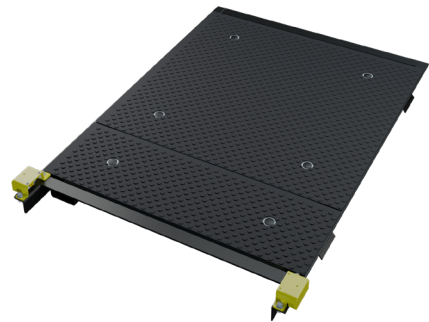
HEAVY VEHICLE TEST LANE

56



HV TEST LANE

58



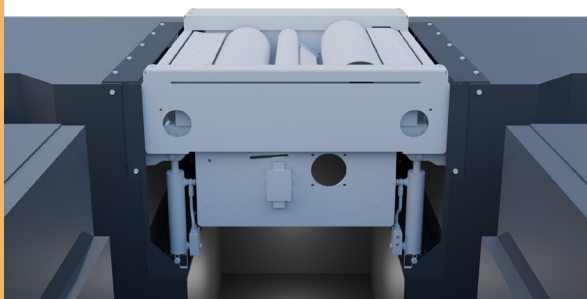
SIDE SLIP
TESTER

60



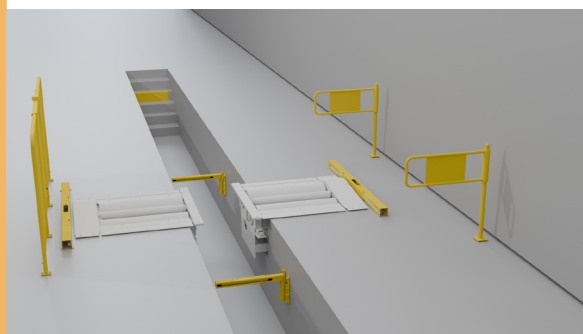
BRAKE TESTER

68



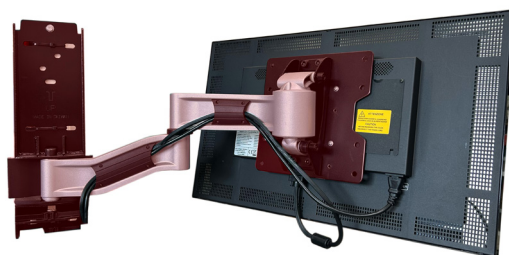
LOAD
SIMULATOR

70



SAFETY
EQUIPMENT

72



ACCESSORIES

HV TEST LANE



A COMPLETE HV TEST LANE.....57

HV CABINET.....57

REF. AMXG20Z11DACJZ

CABINET

HV BRAKE
TESTER

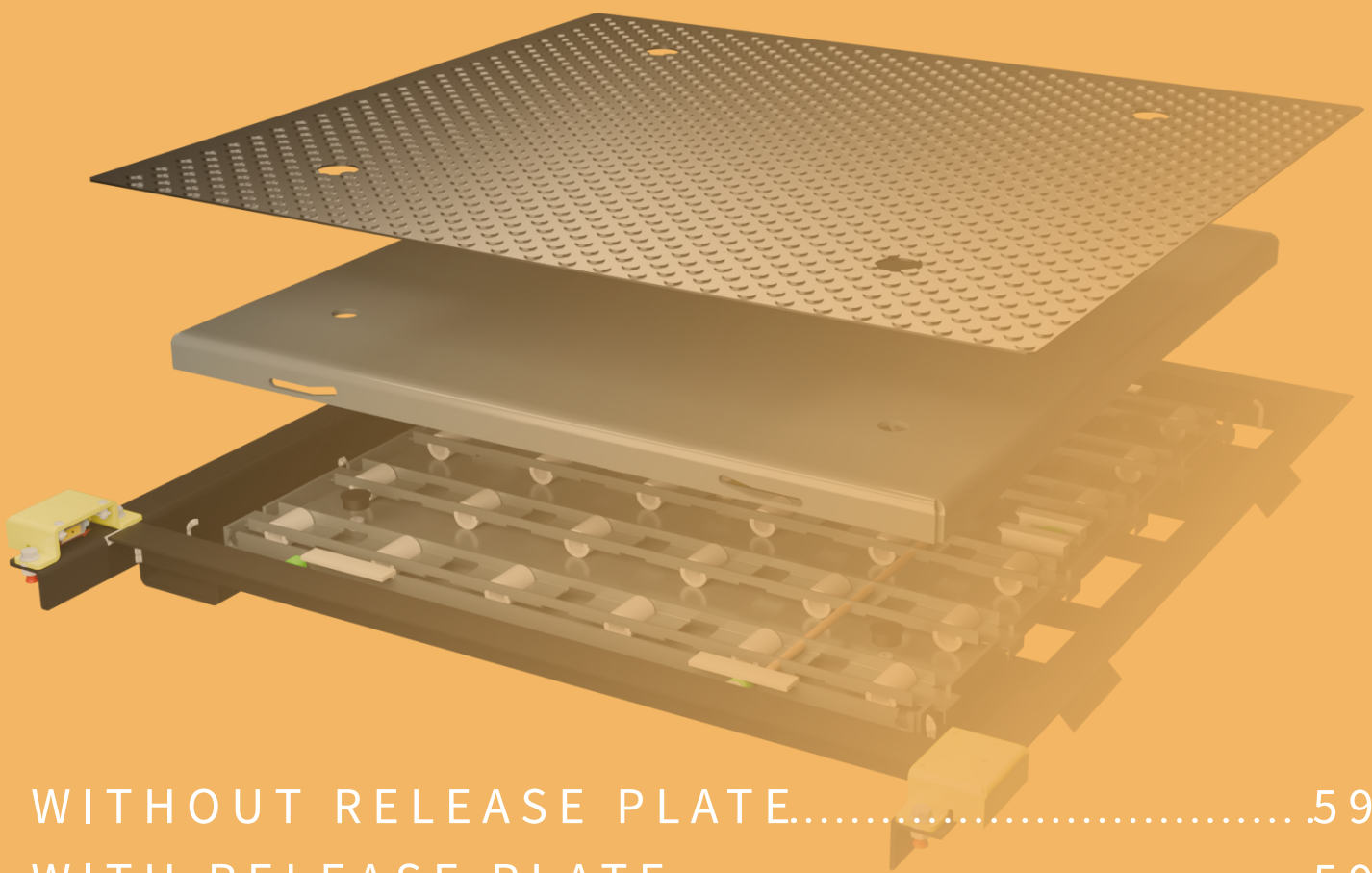
55XXX

HV CABINET

- Secure control cabinet with emergency stop and reset button
- 27" HD tilt and turn screen
- Central processing unit with WINDOWS operating system
- Multilingual interface (French, English, Spanish, German, Portuguese, Turkish...)
- Intuitive software incorporating country-specific procedures.
- Digital communication measurement by acquisition module for reliable and secure measurement
- Connection through LIVESTREAM, GIEGLAN, OTCLAN and ASANET protocols



SIDE SLIP TESTER



WITHOUT RELEASE PLATE.....	59
WITH RELEASE PLATE.....	59
FRAMES.....	59

44100-L-D31

HV SIDE SLIP TESTER WITHOUT RELEASE PLATE

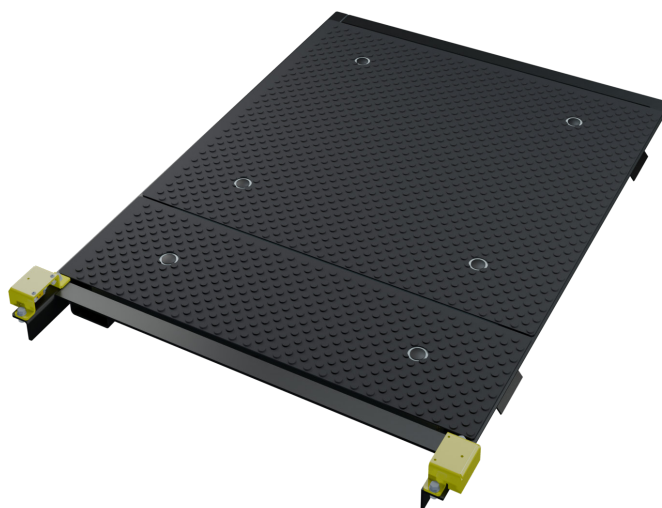


44100-L-D32

HV SIDE SLIP TESTER WITH RELEASE PLATE

The side slip tester is managed by the test lane's cabinet. It allows the measure of the slip of the front and rear wheels. It makes a quick diagnosis of the vehicle's wheel alignment.

Thanks to its great length and its release plate, it gives precise and repetitive measures. The optical detection which is located at the front of the release plate make it more reliable since there is no mechanical contact.

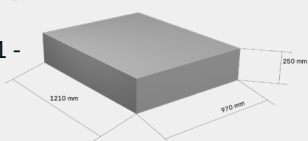


*Optional release plate

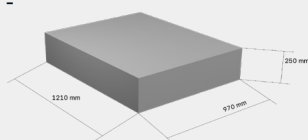
TECHNICAL DATA	44100-L-D31	44100-L-D32
Release plate	without	with
Plates	1	2
Plate dimension (without rubber mat)	750 x 800 mm	750 x 1 050 mm
Rubber mat dimension	890 x 820 mm	890 x 1 090 mm
Thickness of side slip tester	36 mm	
Pit dimension	820 x 840 mm	820 x 1 115 mm
Depth	35 mm	
Measuring range	± 17 mm/m (± 1 mm) or ± 20 m/km	
Load capacity (at the wheel)	10 000 kg	
Number of moving rollers	66	88
Connection	to the MODACQ of the brake tester	
Power supply	12 VDC	
Weight	61 kg	81 kg

PACKAGING

Parcel 44100-L-31 -
90 kg



Parcel 44100-L-32 -
100 kg

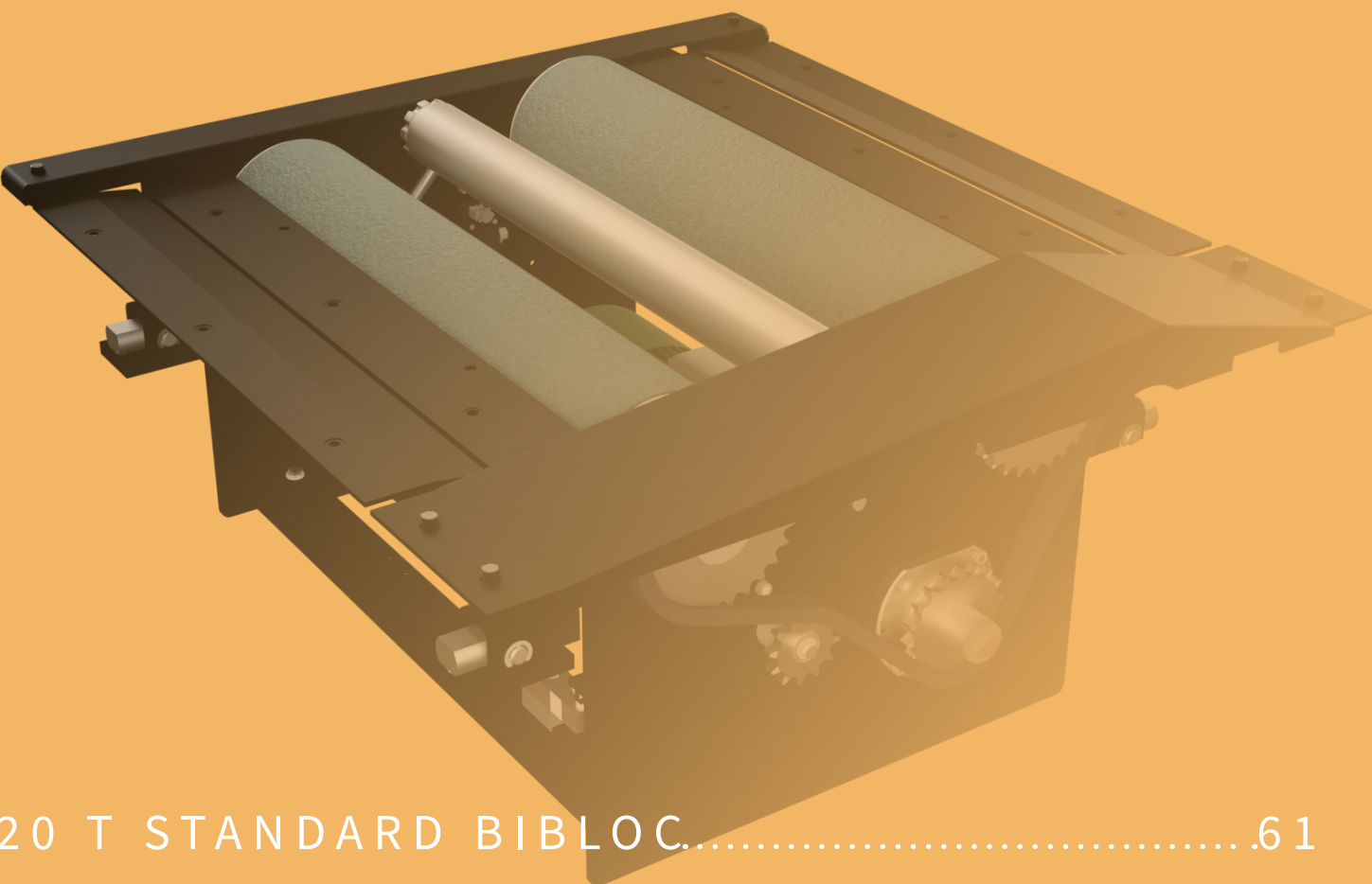


FRAMES



	With exit sensors	Without exit sensors
Ref. 44100-L-D31	Ref. AM123936	Ref. AM123937
Ref. 44100-L-D32	Ref. AM123936-D	Ref. AM123937-D

BRAKE TESTER



20 T STANDARD BIBLOC.....	61
20 T EXTRA WIDE BIBLOC.....	62
20 T NOVA BIBLOC.....	63
15 T STANDARD MONOBLOC.....	64
15 T STANDARD BIBLOC.....	65
16 T EXTRA WIDE BIBLOC.....	66
13 T STANDARD BIBLOC.....	67

44700**20T STANDARD BIBLOC BRAKE TESTER**

This brake tester is used for heavy vehicle inspection and designed for intensive use. The weighing sensors are integrated on both chassis, allowing the weighing of the axle, wheel by wheel.

Performance: The rear rollers are raised to avoid the ejection of the vehicle and to reach the maximum braking force.

Flexibility : The motors are always equipped with a brake, easing the exit of vehicles. It can operate and measure in both directions (front and rear) to test four-wheel drive vehicles (4WD).

**TECHNICAL DATA****44700**

Axle load	20 000 kg
Roller diameter	250 mm
Minimum / Maximum clearance	800 / 2 800 mm
Test speed	2,2 km/h
Brake motors (exit help)	2 x 11 kW
Maximum braking forces	2 x 4 000 daN
Adhesion coefficient	dry > 0,7 / wet > 0,6
Raised rear rollers	35 mm
Clearance between frames	580 mm
Two-speed management	optional

OPTION

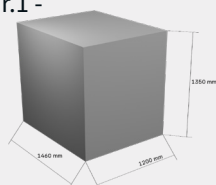
Ref. 53400	Pulling load simulator
Ref. 54700	Lifting load simulator

Available in different variants to meet market requirements :

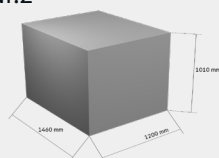
- Two-speed motorization allowing the inspection of light and heavy duty vehicles, by adapting the speed and power output
- Motorization adapted to local power supply : 230 or 400V three-phase in 50 or 60 Hz
- Double-coated rollers and double chain drive to meet the constraints of intensive use
- Available in 17-meter or 30-meter power cable lengths

PACKAGING

Parcel Nr.1 -
800 kg



Parcel Nr.2 -
730 kg



44750

20T EXTRA WIDE BIBLOC BRAKE TESTER



The 47500 brake tester is the wider version of our best- seller 44700 brake tester, with the same features and options.

What differentiates this version of the brake tester is the length of the rollers, which allows wide-track vehicles to be tested (maximum track width 3 100mm).

The 44750 has longer rollers of 1 230 mm (compared with 1 000 mm for the 44700).

TECHNICAL DATA	44750
Axle load	20 000 kg
Roller diameter	250 mm
Minimum / Maximum clearance	600 / 3 100 mm
Test speed	2,2 km/h
Brake motors (exit help)	2 x 11 kW
Maximum braking forces	2 x 4 000 daN
Adhesion coefficient	dry > 0,8 / wet > 0,6
Raised rear rollers	35 mm
Clearance between frames	380 mm
Two-speed management	optional

OPTION

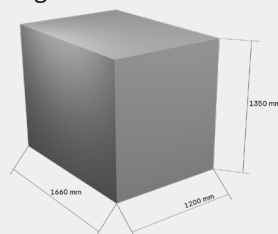
Ref. 54750 Lifting load simulator



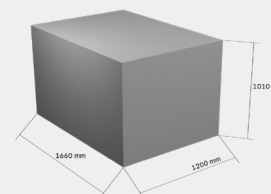
54750
See page 61

PACKAGING

Parcel Nr.1 -
850 kg



Parcel Nr.2 -
780 kg



50500

20T NOVA BIBLOC BRAKE TESTER



The NOVA brake tester is a universal heavy duty brake tester with a new-generation chassis.

It can replace your existing heavy-duty brake tester without any civil engineering modifications. With its installation, you will have access to MULLER AUTOMOTIVE technology.

It has the same features and benefits of the 44700 brake tester.

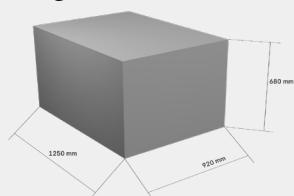
- Financial savings: reduced pit adaptation costs
- Time savings: no downtime, quick installation
- Continuous operation: no operating losses



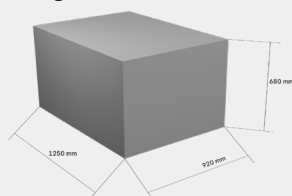
TECHNICAL DATA	50500
Axle load	20 000 kg
Roller diameter	250 mm
Minimum / Maximum clearance	800 / 2 800 mm
Test speed	2,2 km/h
Brake motors (exit help)	2 x 11 kW
Maximum braking forces	2 x 4 000 daN
Adhesion coefficient	dry > 0,7 / wet > 0,6
Raised rear rollers	35 mm
Clearance between frames	580 mm

PACKAGING

Parcel Nr.1 -
585 kg

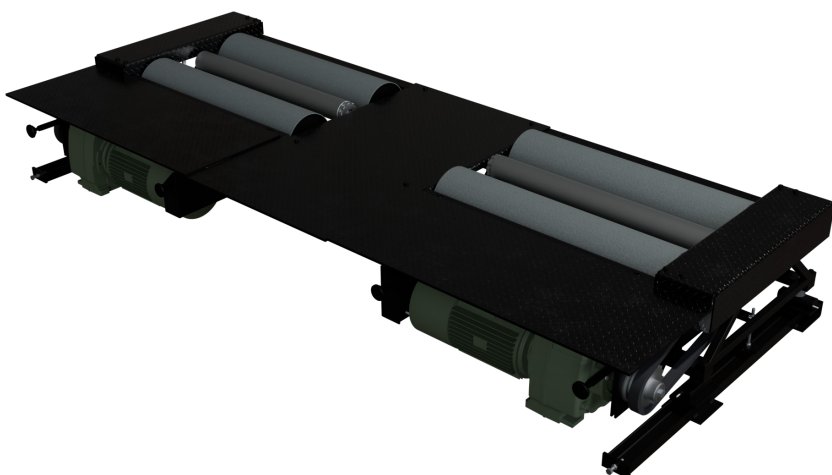


Parcel Nr.2 -
585 kg



44803

15T STANDARD MONOBLOC BRAKE TESTER



This heavy-duty bench with an axle-load capacity of 15 tonnes is mainly intended for the international markets.

Optionally equipped with 15 kW brake motors, it is also available in a two-speed version.

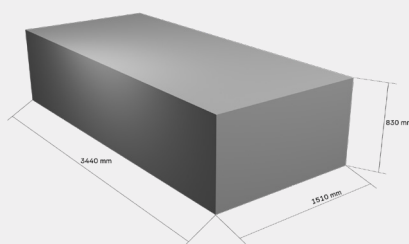
As part of a mixed line, it can be used to test light vehicles. As an optional feature, it can be fitted with a pneumatic exit kit to facilitate the ejection of light vehicles.

Thanks to its design - with the motors adjacent to the rollers - it requires a pit height of only 420 mm.

TECHNICAL DATA	44803
Axle load	15 000 kg
Roller diameter	250 mm
Minimum / Maximum clearance	800 / 2 800 mm
Test speed	2,2 km/h
Brake motors (exit help)	2 x 11 kW
Maximum braking forces	2 x 4 000 daN
Adhesion coefficient	dry > 0,7 / wet > 0,6
Raised rear rollers	no
Clearance between frames	500 mm
Two-speed management	optional

PACKAGING

Parcel -
850 kg



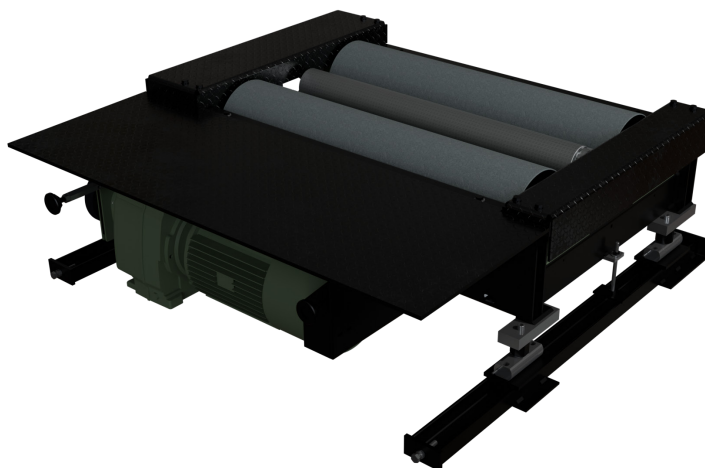
44803BB

15T STANDARD BIBLOC BRAKE TESTER



The bibloc version of the 44803 model is technologically identical in all aspects.

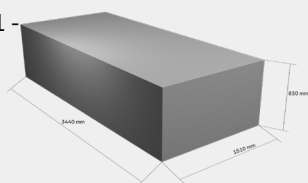
Like the 44803 monobloc, this version, which is designed for export markets equips our entire range of mobile stations.



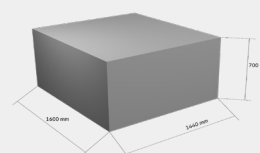
TECHNICAL DATA	44803BB
Axle load	18 000 kg
Minimum / Maximum clearance	800 mm / 2 800 mm
Distance between roller axles	500 mm
Roller diameter	250 mm
Roller covering	Epoxy /Silica
Adhesion coefficient	dry > 0,8 / wet > 0,6
Brake motors (exit help)	2 x 11 kW
Test speed	2,2 km/h
Maximum braking forces	2 x 4 000 daN
Two-speed management	optional
Clearance between frames	520 mm

PACKAGING

Parcel Nr.1 -
800 kg



Parcel Nr.2 -
800 kg



53500BB**16T EXTRA WIDE BIBLOC BRAKE TESTER**

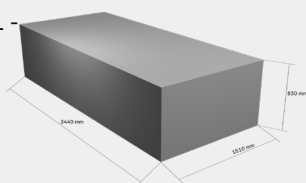
With a height of 438 mm, this version of the compact bibloc brake tester is perfect for installation in shallow pits.

With a maximum track clearance of 3100 mm, this brake tester is an interesting alternative to meet specific market requirements, where our standard products don't comply with the standards.

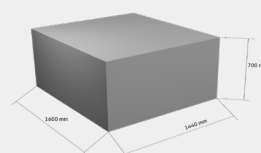
TECHNICAL DATA	53500BB
Axle load	16 000 kg
Minimum / Maximum clearance	600 mm / 3 100 mm
Distance between roller axles	490 mm
Raised rear roller	30 mm
Roller diameter	250 mm
Roller coating	Epoxy /Silica
Adhesion coefficient	dry > 0,8 / wet > 0,6
Brake motors (exit help)	2 x 11 kW
Maximum braking forces	2 x 4000 daN
Test speed	2,2 km/h

PACKAGING

Parcel Nr.1 -
800 kg



Parcel Nr.2 -
800 kg



56400

13T STANDARD MONOBLOC BRAKE TESTER



This version has a axle load capacity of 13 tonnes per axle. Its compact mechanical design requires a shallow pit (600 mm).

This brake tester allows to measure :

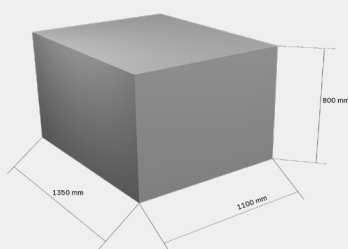
- wheel weight, static and dynamic during the test
- braking force and therefore braking efficiency
- residual and ovalization of the brake drums
- the raised rollers at the rear allow braking forces to be measured and also avoid ejection of the vehicle during the test.



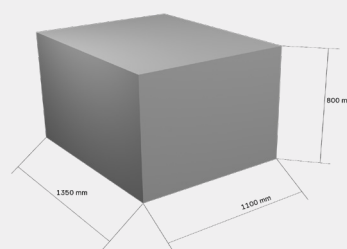
TECHNICAL DATA	56400
Maximum axle load	13 000 kg
Roller diameter	209 mm
Minimum / Maximum clearance	800 / 2 800 mm
Test speed	2,2 km/h
Brake motors (exit help)	2 x 9 kW
Maximum braking forces	2 x 3 000 daN
Adhesion coefficient	dry > 0,7 / wet > 0,6
Raised rear rollers	30 mm
Clearance between frames	460 mm

PACKAGING

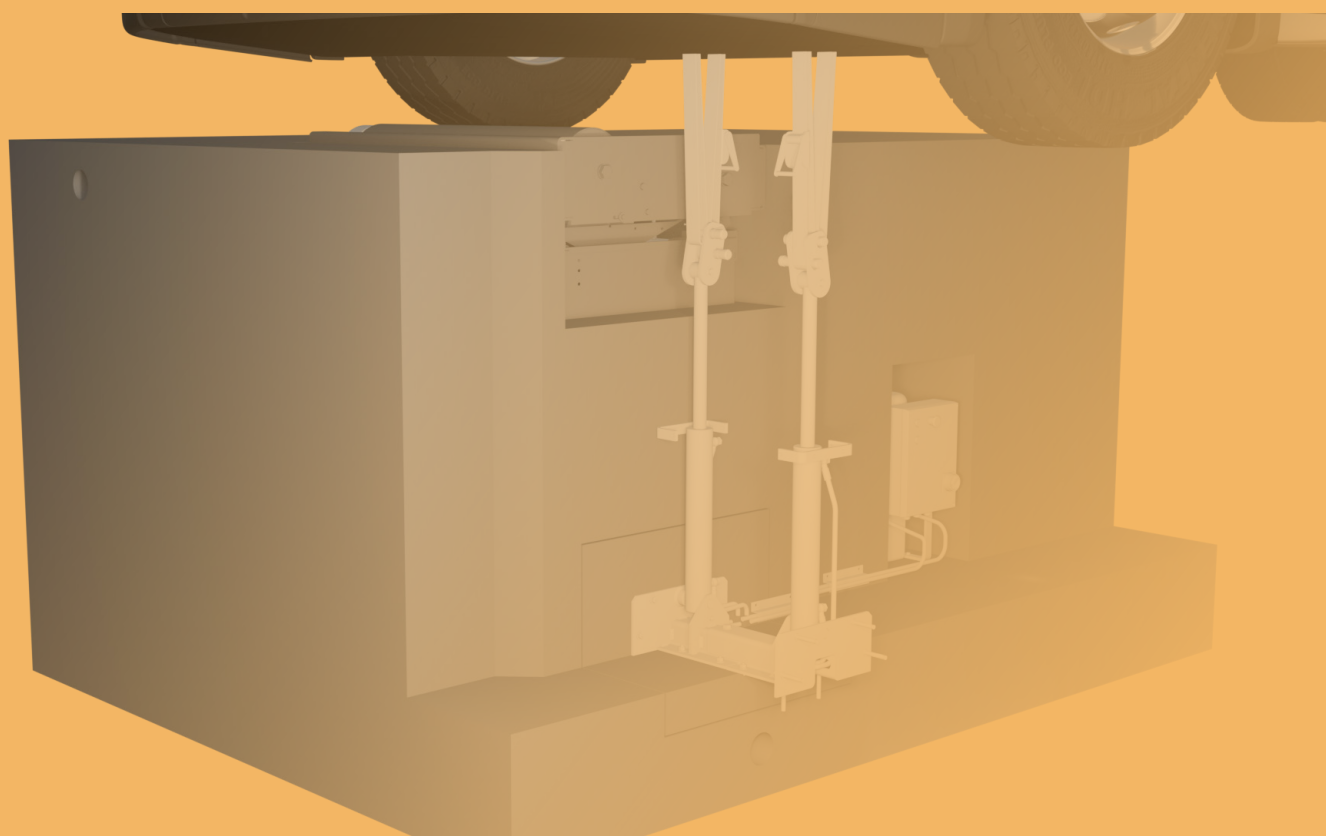
Parcel Nr.1 -
580 kg



Parcel Nr.2 -
580 kg



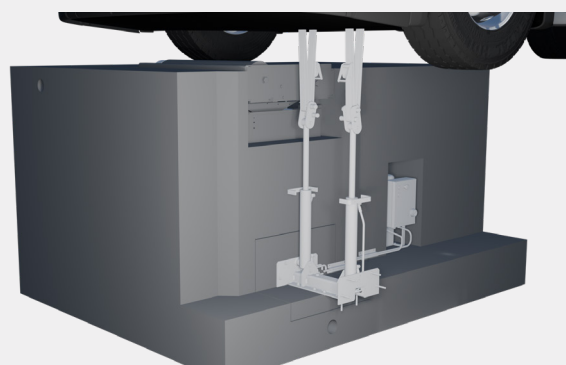
LOAD SIMULATOR



PULLING LOAD SIMULATOR.....	69
LIFTING LOAD SIMULATOR.....	69

53400

PULLING LOAD SIMULATOR



TECHNICAL DATA	53400
Cylinders	2 x Ø70
Stroke	400 mm
Power supply	2,2 kW (400 V 50 Hz)
Average clearance between cylinders	410 mm
Strap safety coefficient	2
Strap	EN 12195-2 Standard
Minimum concrete dimensions in anchorage area	150 x 500 x 800 mm
Pit width	From 59 to 79 mm (under axle)

- The 53400 traction load simulator enables you to measure the efficiency of a brake tester equipped with this option, by applying a vertical force from top to bottom.

The purpose of load simulation is to provide the necessary adhesion between the wheels and rollers of the brake tester, in order to get as close as possible to the maximum real values.

This device is suitable for all pit widths between 590 and 790 mm.

54700

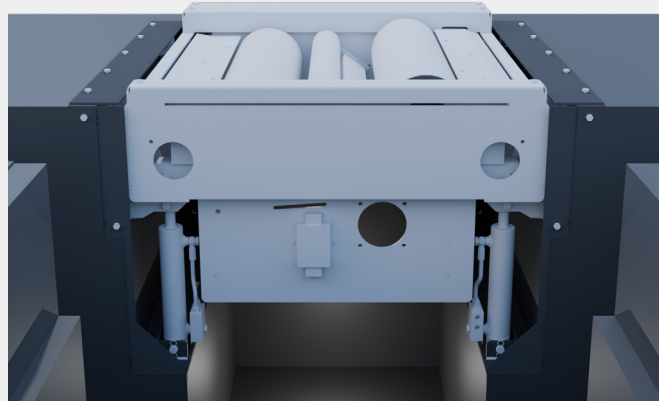
LIFTING LOAD SIMULATOR FOR 44700 BRAKE TESTER



54750

LIFTING LOAD SIMULATOR FOR 44750 WIDE BRAKE TESTER

TECHNICAL DATA	54700 / 54750
Lifting capacity per axle	12 000 kg
Capacity in lowest position	20 000 kg
Lifting stroke	250 mm
Lifting / lowering time	18 sec.
Operating pressure	130 bars
Max. pressure	150 bars
Hydraulic cylinders	8 cylinders, double-acting
Minimum / Maximum track	800 mm - 2800 mm

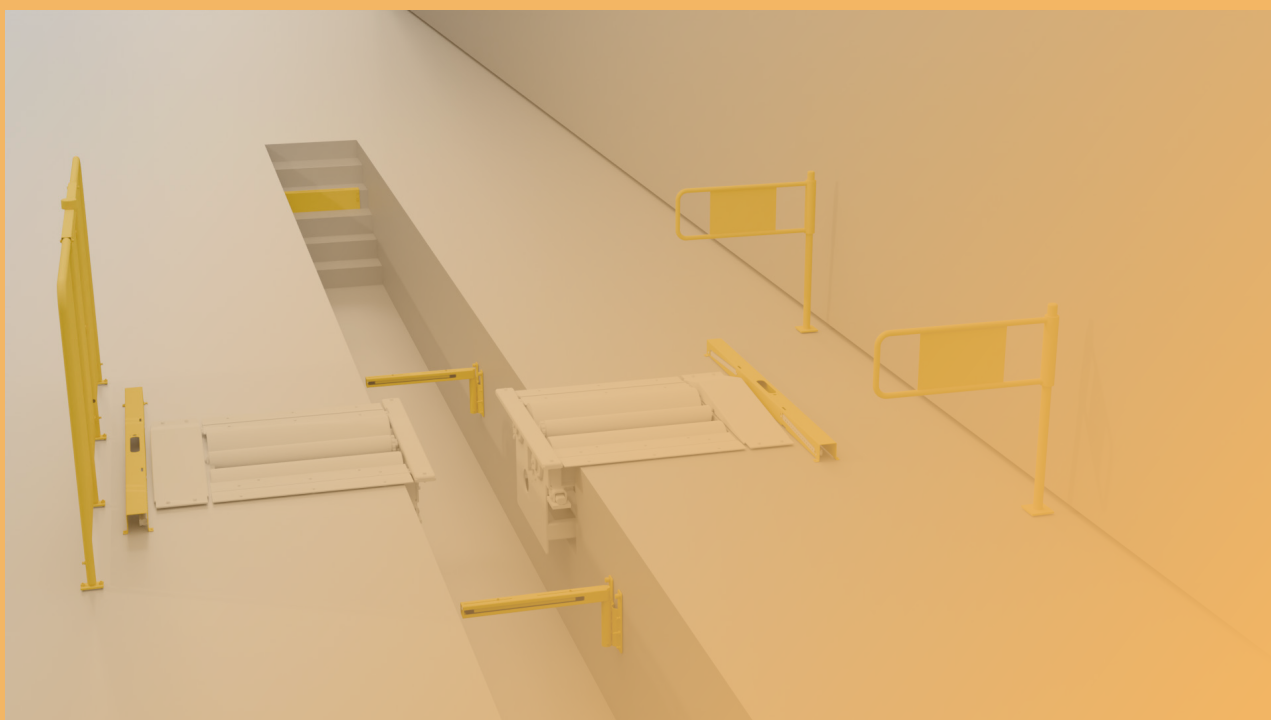


- The 54700 or 54750 load simulator is used to lift the axle of a multi-axle vehicle (tractors or tandem trailers), while simultaneously lifting the brake tester. As a result, the axles not on the brake tester will not touch the ground or almost.

In this way, the axle on the brake tester supports all or part of the weight of the other axles. The simulator allows you to test the brakes in the high position, but also in the low position, and even in the intermediate position.

The simulator is equipped with a hydraulic power unit which powers the 8 cylinders of the 2 frames by means of a hydraulic synchronization device.

SAFETY EQUIPMENT

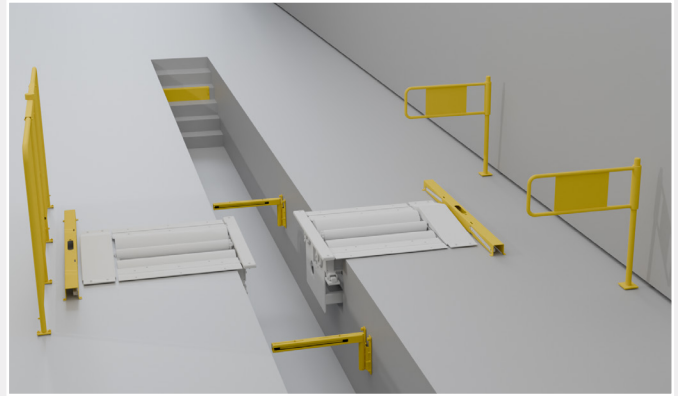


SAFETY KIT ABOVE THE PIT.....	71
SAFETY KIT IN THE PIT.....	71

To ensure the safety of your employees and your test equipment, MULLER AUTOMOTIVE offers several solutions. They are adaptable and comply with current international standards. They are designed to provide a safe working environment around the brake tester.

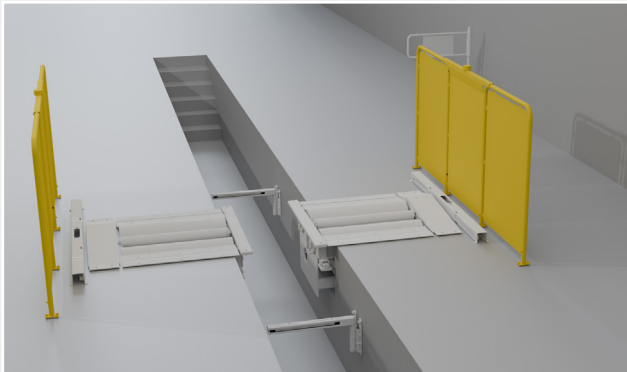
We identify two main danger zones in accordance with international standards :

- the “upper” zone, above the pit where the brake tester is located, with the vehicle’s clearance zone
- the “lower” zone, corresponding to the inspection pit where the brake tester is located.



GUARDRAIL (per unit)

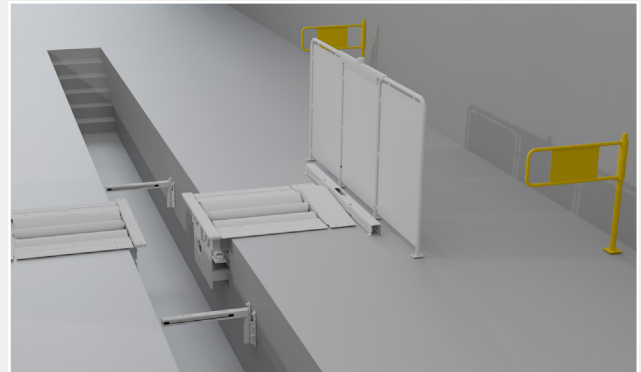
Ref. AM123910



The guardrails protect the side accesses to the brake tester and prevent access to the wheels when they are running.

GATES

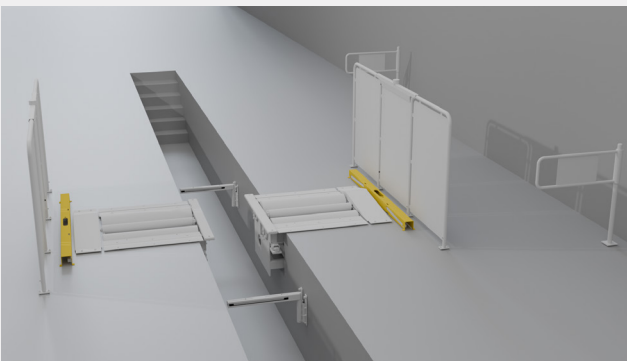
Ref. AM122588



The gates prevent the danger of approaching the brake tester from the side.

HIGH BARRIERS

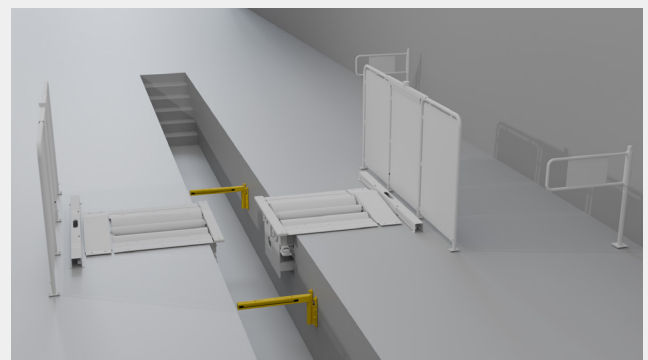
Ref. AM123911



Optical beams are installed on each side of the brake tester.
If an optical beam is interrupted, the motors are stopped immediately. An orange visual flash mounted on the guardrails completes the installation.

LOWER SAFETY KIT

Ref. AM123910



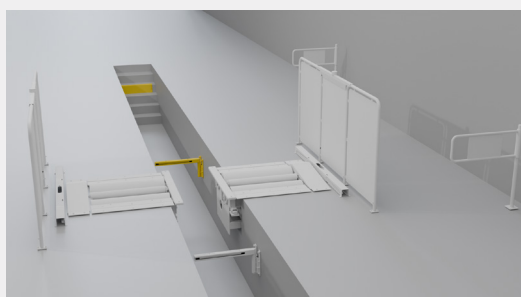
The optical safety gates prevent anyone from being present in the pit during the entire test.
The system stops motor rotation as soon as a beam is interrupted.

LOWER SAFETY KIT - 1 gate, 1 step

Ref. AM124124

LOWER SAFETY KIT - 2 steps (1 at the entrance + 1 at the exit of the pit)

Ref. AM124125



ACCESSORIES

WIRED PEDOMETER.....	73
MIRRORS.....	73
FREE ROLLERS.....	73
LV TIRE GAUGE.....	73
INFLATOR GUN.....	73
WIDE-TRACK KIT.....	73
BLUETOOTH KIT FOR PEDOMETER.....	74
LV TIRE GAUGE.....	74
LV / HV TIRE GAUGE.....	74
WALL SUPPORT FOR SCREEN.....	74
REPEATER TABLET.....	74
PRESSURE SENSORS.....	74
HV MIRRORS.....	74
FLASHING LIGHT.....	74
DECELEROMETER.....	75

WIRED PEDOMETER

Ref. AM19200-B-1



The pedometer or (pedal force meter) measures the force applied by the operator to the brake actuator during the brake test on the Bilanmatic®.

By measuring pedal force, it is possible to synchronize braking forces when testing in “wheel-by-wheel” mode, enabling measurement of left/right imbalance.

**FREE ROLLERS**

Ref. 122146-1



The free rollers 122146-1 are used for four-wheel drive (4WD) light vehicles up to 3,5T. They are placed on the ground, equipped with a retractable handle and 2 wheels for easy handling.

The use of free rollers allows the free rotation of a non-disengageable drive axle while another drive axle of the vehicle is being tested in the brake tester.

**WIDE-TRACK KIT**

Ref. AM100519-2VD

**INFLATOR GUN**

Ref. AM1822N

**LV MIRROR**

Ref. AM686

**LV TIRE GAUGE**

Ref. AM206100



BLUETOOTH KIT FOR PEDOMETER

Ref. 123230



This bluetooth unit connected to the pedometer ensures the remote control and the transmission of data.

**LV TIRE GAUGE**

Ref. AM206100-1

**LV / HV TIRE GAUGE**

Ref. AM206100-5

**WALL SUPPORT FOR SCREEN****REPEATER TABLET**

Ref. 120900-3



This secured touch-screen tablet enables to repeat the screen of the main Bilanmatic® monitor without interaction.

It allows the inspector to follow the steps during a HV test.

This tablet is configured and locked in passive mode, meaning that no instructions can be given to the Bilanmatic® program.

**PRESSURE SENSORS**

Ref.10000-RAD3



In addition to measuring brake efficiency, some countries are also using pressure sensors in the vehicle's braking system.

Our system consists of :

- a radio communication station
- pneumatic sensors
- a charger

**HV MIRROR**

Ref. 104472

**FLASHING LIGHT**

Ref. AM123118



DECELEROMETER

Ref. AM35230



A compact, brake performance tester that uses a multi-channel sensor to measure tri-axial deceleration of any type of vehicle, making it one of the most versatile brake testers on the market.

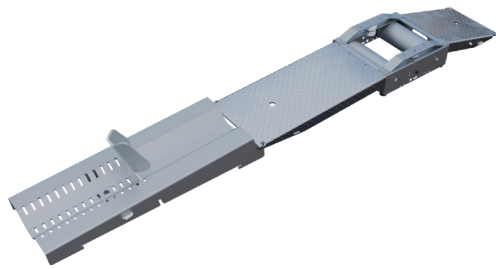
- Determines tri-axial deceleration, forward as well as sideways deceleration (lane change)
- Simple 12 button operation via a tactile membrane pad
- Can be installed anywhere in the vehicle.
- Self-aligning by identifying its orientation at the beginning of each test.
- Built-in integrity check
- Built-in real time clock
- Calibration is internationally traceable through NATA.
- Calibration interval twelve months

ACCESSORIES SUMMARY

ACCESSORIES	REFERENCES	EQUIPMENT COMPATIBLE
Cover plates	46620-R	46600 46600-Z
Metal rollers	AM43300\$AX41113	
Wide-track kit	122857-2VD	46600 46600-Z
Wide-track kit	100519-2VD	43300 43300-Z
Wide-track kit + LED kit	122885 (for one side)	
Wired pedometer	19200-B-1	All LV brake testers
Bluetooth kit for pedometer	123230	All LV brake testers
Weighing kit option	100460-MUX	43300 43350
Weighing kit option	100460-B-MUX	43350BB
Free rollers	122146-1	All LV brake testers

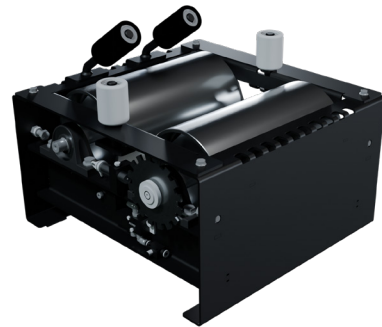
SPEEDOMETER

78



MOPED

79



MOTORCYCLE

80



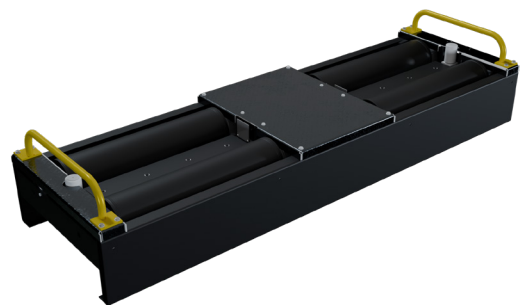
TRICYCLE &
QUAD

82



LIGHT VEHICLE

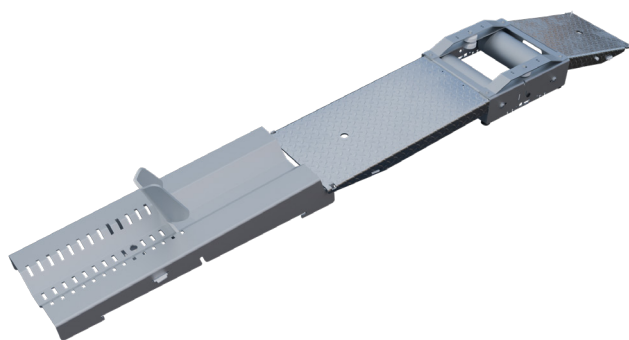
83



HEAVY
VEHICLE

51200

MOPED SPEEDOMETER



The moped speedometer bench fitted with unbraked rollers allows the measurement of the maximum speed of mopeds.

The inspection test consists of measuring the maximum linear speed generated by the moped at its maximum rpm and calculating the maximum equivalent corrected speed obtained on the road.

TECHNICAL DATA	Laid with ramps	Built-in without ramps
Dimension of the speedometer tester	1 160 x 150 x 330 mm	380 x 150 x 330 mm
Weight of the tester	31 kg	19 kg
Tester coating	Zinc plated steel	
Passage capacity	500 kg	
Max speed (2 signals / revolution)	100 km/h	
Roller diameter	100 mm	
Roller axle spread	250 mm	
Adhesion coefficient	dry > 0,3 / wet > 0,3	
Actual length of rollers	308 mm	
Wheel capacity	between 250 and 700 mm	
Resolution	0,1 km/h	
Free rotation force	0,1 Nm	
Maximum inertia in assembly	0,009 kg/m ²	

56810 / 56810-M

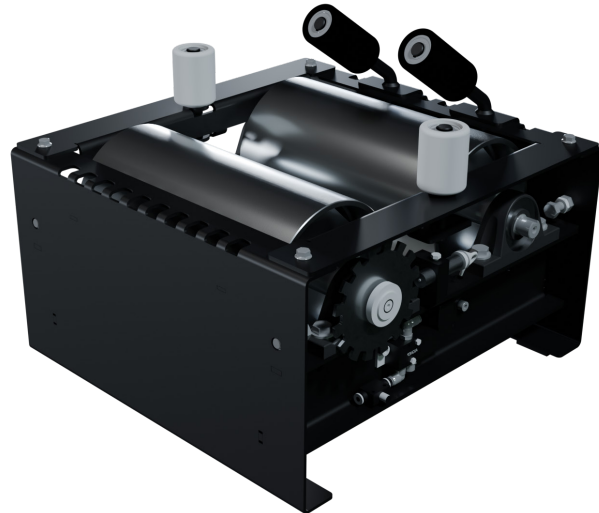
2 WHEELERS SPEEDOMETER NON MOTORIZED / MOTORIZED



The 56810 Motorized Motorcycle Speedometer is designed to measure the wheel speed of a 2-wheeled vehicle to compare it with that indicated by its on-board vehicle's speedometer.

By design, it allows a maximum speed of 100 km/h. It is equipped with a guidance device for holding the front wheel.

The speedometer is operated by a console mounted on an articulated bracket to facilitate the inspector's work.



TECHNICAL DATA	56810-M	56810
	motorized	not motorized
Chassis configuration	monobloc	
Pit dimension	570 x 300 x 1 150 mm	
Bench dimension	540 x 295 x 1 120 mm	
Max. vertical load per wheel	500 kg	
Max. vertical load per axle	1 000 kg	
Roller diameter	Ø191,5 mm	
Max. speed	100 km/h	
Blocking thrust force	Approx. 4 000 N / 6 bars	

56820

3/4 WHEELERS SPEEDOMETER NON MOTORIZED



56820 Speedometer series are designed to measure the linear speed of the wheel of a 2, 3 or 4-wheels vehicle to compare it to that indicated by the on-board vehicle's speedometer.

The two-blocks configuration consists of a 56810 with a 56820 and for the motorized configuration of a 56810-M with a 56820. Thus, these configurations make it possible to adapt the minimum and maximum track as needed by using the central plate sheet.

TECHNICAL DATA	56820
	not motorized
Chassis configuration	bibloc
Pit dimension	570 x 300 x 1 810 mm
Bench dimension	540 x 295 x 1 780 mm
Max vertical load per wheel	500 kg
Max vertical load per axle	1 000 kg
Roller diameter	Ø191,5 mm
Max speed	100 km/h
Blocking thrust force	Approx. 4 000 N / 6 bars

56830

3 / 4 WHEELERS MONOBLOC SPEEDOMETER NON MOTORIZED



56830-M

3 / 4 WHEELERS MONOBLOC SPEEDOMETER MOTORIZED

56830 Speedometer series are designed to measure the linear speed of the wheel of a 2, 3 or 4-wheel vehicle to compare it to that indicated by the on-board vehicle's speedometer.

The motorcycle speedometer series are specially made for 2, 3 or 4-wheels vehicles in the category and are available in 2 main configurations :

- 1 motorized
- 1 non-motorized



TECHNICAL DATA	56830	56830-M
	non motorized	motorized
Chassis type	monobloc	
Pit dimension	570 x 300 x 550 mm	
Bench dimension	540 x 295 x 520	
Max speed	100 km/h	
Max vertical load capacity per wheel	500 kg	
Max vertical load capacity per axle	1 000 kg	
Roller diameter	Ø191,5 mm	
Motor	3 kW 3000 rpm 230/400 Vac Tri	
Blocking thrust force	approx. 4000 N / 6 bars	

CONFIGURATION	2 wheelers	3 and 4 wheelers	
Non motorized	56810	56830	56810 + 56820
motorized	56810-A	56830-M	56810-M + 56820
Chassis type	monobloc		bibloc

46300-1MUX

LV NON MOTORIZED SPEEDOMETER



46301-1MUX

LV MOTORIZED SPEEDOMETER



The Light Vehicle range of speedometers are designed to measure the linear speed of a light vehicle's wheel to compare it with the one indicated by the vehicle's speedometer. The LV speedometers support a maximum axle load of 3T and are available in 2 versions

- 1 motorized version
- 1 non-motorized version

TECHNICAL DATA	46300-1MUX	46301-1MUX
	not motorised	motorised
Pit dimension	2 500 x 680 x 280 mm	
Protection convering	black paint	
Maximum axle loading	3 000 kg	
Min. / max. track	780 / 2 200 mm	
Distance between roller axles	370 mm	
Roller diameter	200 mm	
Wheel diameter range	10 - 18 inches	
Roller blocking	by 8 brake pads (without asbestos)	
Vehicle exit	by roller locking	
Pneumatic supply pressure	maxi 8 bar.	

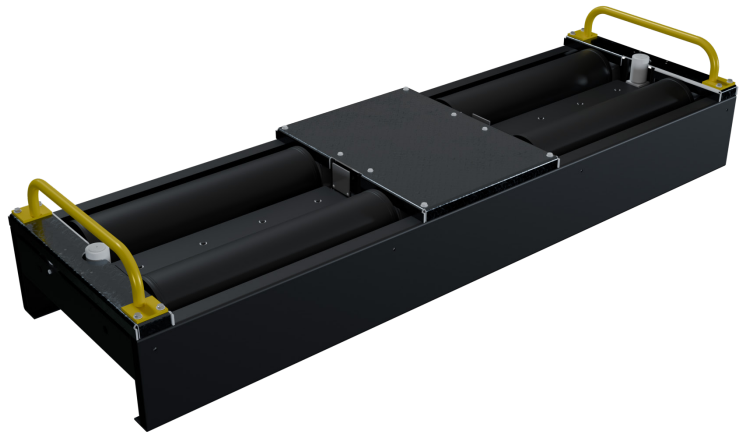
45300-2MUX

HV SPEEDOMETER



The speedometers of the Heavy Duty range are designed to measure the linear speed of the wheel of a heavy vehicle (HV, bus, etc.) to compare it to the vehicle's speedometer.

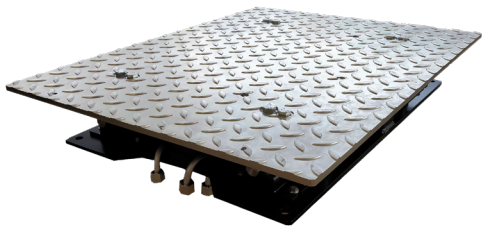
The HDV speedometers support an axle load greater than 15T. Its new roller braking system ensures that the vehicle exits the test bench without any problems.



TECHNICAL DATA	45300-2MUX
Pit dimension	980 x 3 100 x 360 mm
Finishing	black paint
Max load per axle	15 000 kg
Min. / max. track	720 / 2 800 mm
Distance between roller axles	500 mm
Roller diameter	244 mm
Wheel diameter range	13 - 24 inches
Maximum speed	160 km/h
Resolution (speed > 30km/h)	< 1km/h
Accuracy (speed > 30 km/h)	+/- 1% of added value
Roll locking	by 8 or 12 brake pads (without asbestos)
Vehicle exit	by pneumatic lift and roller braking
Number of cylinders for vehicle lifting	5
Elevation power	> 2 000 daN / bar
Elevation stroke	90 mm
Pneumatic supply pressure	maxi 8 bar.

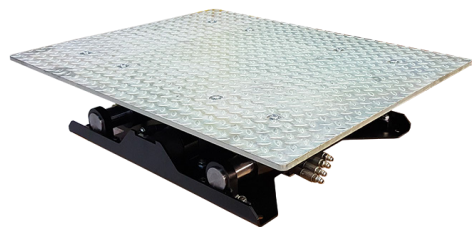
AXLE PLAY DETECTORS

86



LIGHT VEHICLE

87



HEAVY DUTY
VEHICLE

88



HDV
RECONDITIONING

89



GENERAL
INFORMATION

56100

LV AXLE PLAY DETECTOR



The LV play detectors trigger a mechanical stress to be applied on the wheels to check the various steering components and fluid leaks.

The plate movement is transversally controlled : longitudinal and diagonal movements are created by a wired remote control equipped with a LED lamp. The plates can be installed in a recessed manner in a concrete Pit or placed directly on the ground (access ramps provided). They operate independently of each other.



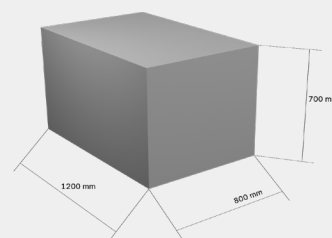
TECHNICAL DATA	56100-A	56110-A
Installation	Recessed	On the ground
Axle load	3 000 kg	3 000 kg
Useful dimension per plate	630 x 240 mm	630 x 240 mm
Overall dimension	720 x 550 x 165 mm	750 x 550 x 27 mm
Plate transverse travel	80 mm	80 mm
Plate longitudinal travel	80 mm	80 mm
Thrust force	1 060 daN	1 060 daN
Operating pressure	150 bars	150 bars
Motor power	2,2 kW	2,2kW

OPTION

Ref. 123307	Sealed frames, flush-mounted corner without angle or protruding angle
Ref. 123510	Sealed frames, flush-mounted with floor angle
Ref. 123309	Sealed frames, installed version

PACKAGING

Parcel -
220 kg



56000

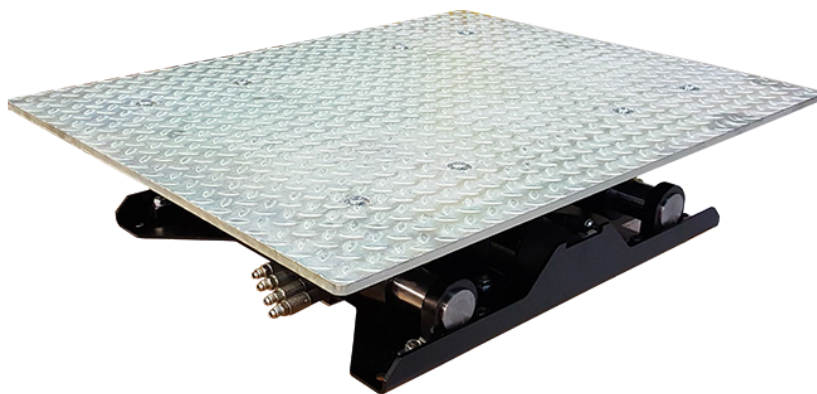
HDV AXLE PLAY DETECTORS



The HV 56000 play detectors allow mechanical stresses to be applied to the wheel to visually check the play on an axle: spindles, pivots, suspensions, joints, bearings, axle gear, etc...

The displacements of the plate is controlled in transverse, longitudinal and diagonal movements by a wired remote control equipped with an LED lamp.

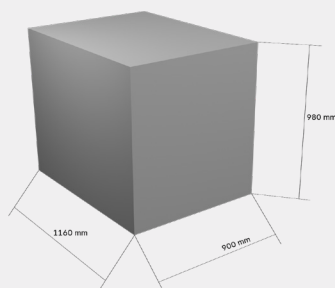
For the 56000 play detectors, the installation requires new Pit because a specific sealed frame is required



TECHNICAL DATA	56000-KP	56000-KP-Z
Finishing		zinc plated chassis
Dimensions	865 x 665 mm	865 x 665 mm
Plate center distance	1 770 mm	1 770 mm
Plates drive-by clearance mini / maxi	900 mm / 2 630 mm	900 mm / 2 630 mm
Counter plates displacement mini / maxi (recommended)	1 130 mm / 2 390 mm	1 130 mm / 2 390 mm
Weight of the displacement plate	190 kg	190 kg
Maximum axle load	20 000 kg	20 000 kg
Thrust force (unloaded)	3 000 daN	3 000 daN
Thrust force (full oaded)	2 700 daN	2 700 daN

PACKAGING

Parcel -
460 kg





The plates are installed in recessed installation in an existing concrete Pit in their own sealed frames or in «upgrade».

The renovation works allows the replacement of the play detectors without doing again the civil work.

Thus, it is possible to replace only the play detectors and keep the remote control and the control cabinet.

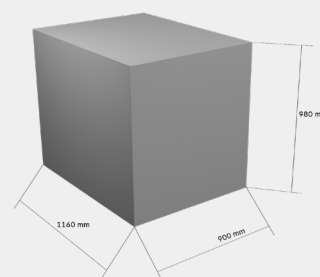
CARACTÉRISTIQUES GÉNÉRALES	56000UPG-KP	56000UPG-KP-Z
Finishing	Zinc plated	
Dimensions	865 x 665 mm	
Plate center distance	1770 mm	
Plates drive-by track min / max	900 mm / 2630 mm	
Counter plates displacement min / max	900 mm / 2630 mm (recommended)	
Displacement plate weight	190 kg	
Maximum load per axle	20000 kg	
Thrust force (unloaded)	3000 daN	
Thrust force (full oaded)	2700 daN	

OPTION

Ref. 123345 Hydraulic power unit

PACKAGING

Parcel -
540 kg



- The control box is equipped with a Programmable Logic Controller allowing to :
 - manage opposing and accompanying displacements (movement in the same direction)
 - manage alternating movements automatically
 - manage movements alternatives in automatic
 - center the plates with deflection

- The movement of the plate is controlled in transverse, longitudinal and diagonal displacements by a wired control torch equipped with an LED lamp.
Displacements in the 4 directions and 8 ways

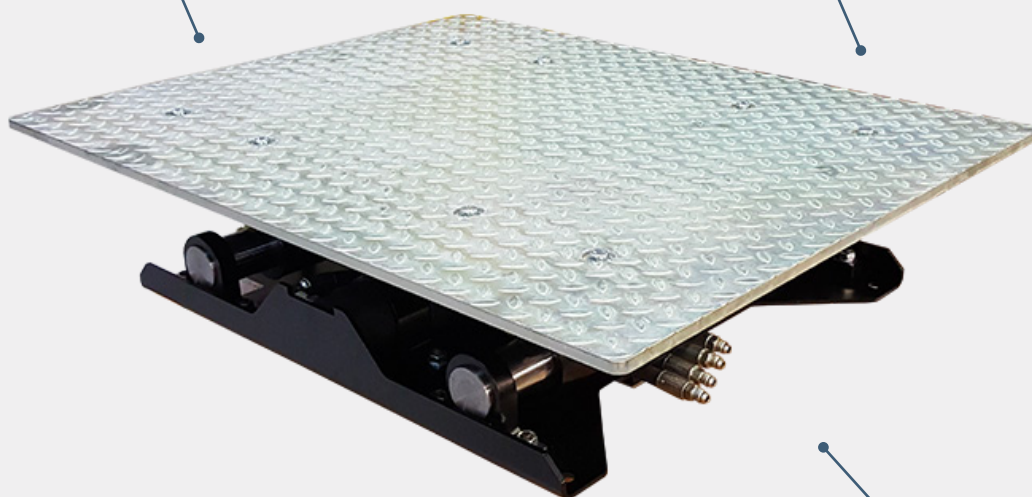


- The shape of the play detector provides better wheel grip. A surface treatment of the metal parts by cataphoresis protects the plates from corrosion.

- The play detectors can be installed in recessed form with a Pit (HV and LV) or laid down directly on the ground (LV only) (access ramps provided).
They operate independently of each other.

Movements in 4 directions (8 ways)

Wired remote control with LED



Hydraulic operation

Slides mounted on self-lubricated rings

Complies with the European Directive

MOBILE STATION

92



3,5 T

94



6,5 T

96



CONTAINER

98



TRANSVERSAL

100



LATERAL

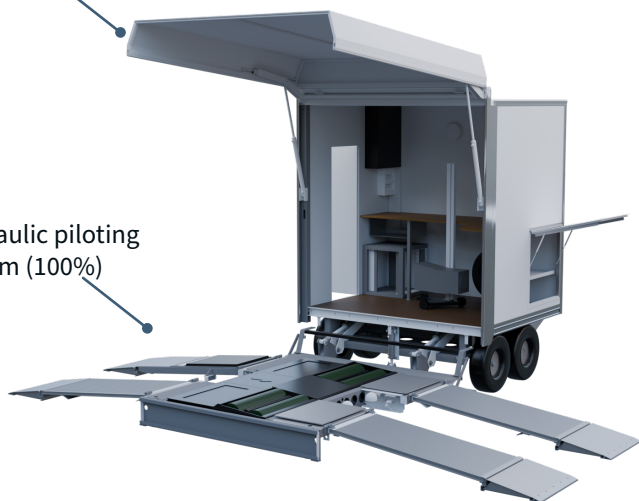
ALPHA35

MOBILE STATION 3,5T



Lifting roof

Hydraulic piloting system (100%)



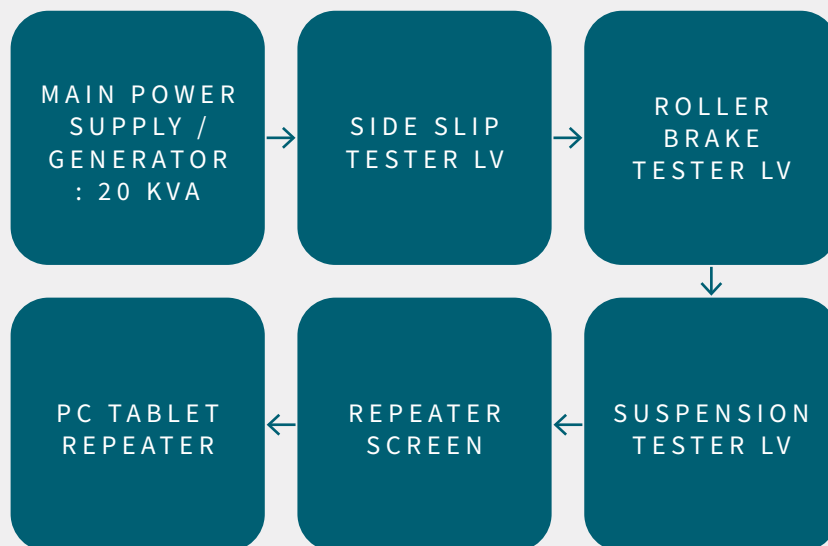
With a total weight of 3.5T makes it a towable station for pickup and light commercial vehicles. This mobile station, in its standard configuration permits the technical inspection of light vehicles.

An office room allows the administrative tasks required for technical vehicle inspection to be carried out.

Like all mobile stations in the range, many configurations are possible (motorcycle, mixed, lifting, etc.)



TECHNICAL DATA & BASIC EQUIPMENT



THIS STATION IS COMPOSED OF :

- A technical crossing zone in where the necessary technical inspection equipment is located
- A spacious office room to carry out the administrative tasks required for technical inspection
- All deployment functions are hydraulically controlled by using a wired remote control

PERFORMANCE & RELIABILITY

Deployment and setting-up of the station entirely hydraulically controlled.

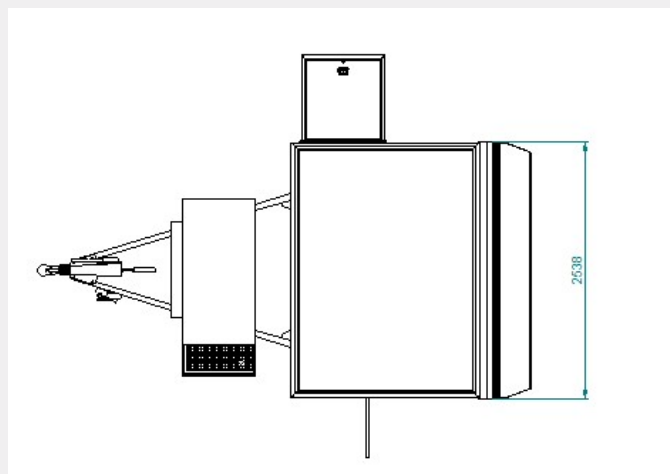
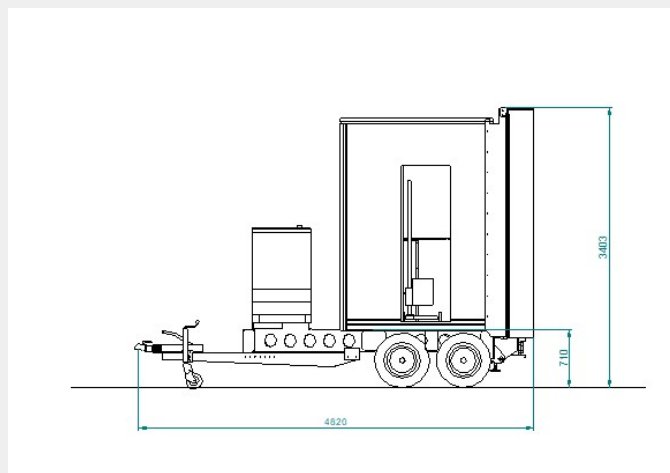
FLEXIBILITY

Equipped with generator, the mobile station becomes electrically autonomous.

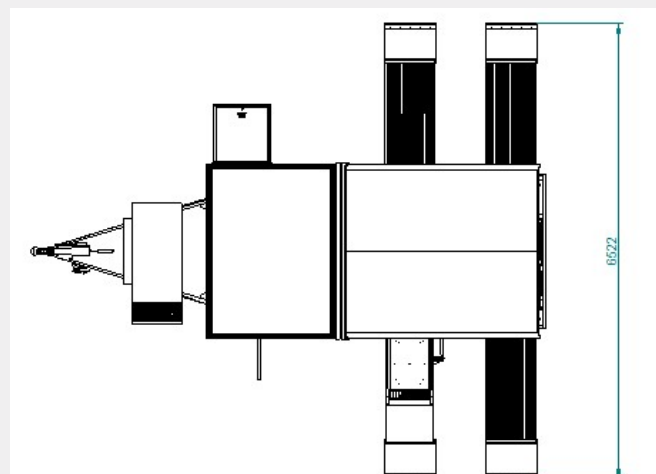
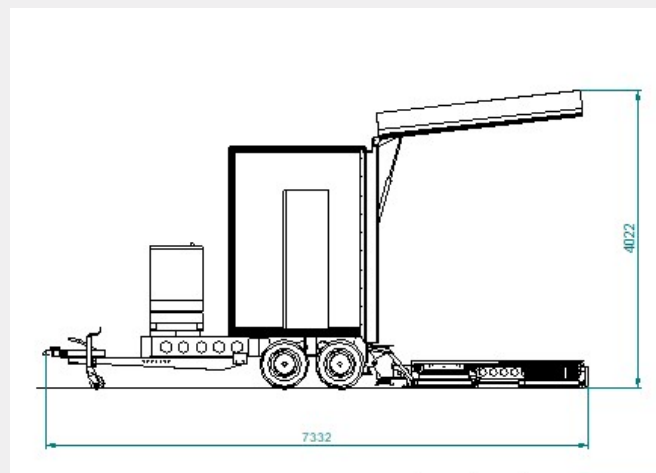
THIS STATION CAN BE EQUIPPED UPON YOUR REQUESTS AND OPTIONS

BASIC EQUIPMENT	3W	LV	HV
Main power supply / Generator 20 KVA		✓	
Roller brake tester		✓	
Suspension tester		✓	
Side slip tester		✓	
Axle play detectors		✓	
PC tablet repeater		✓	
OPTIONAL EQUIPMENT	3W	LV	HV
Roller brake tester (Ref. 43300)	✓		
Headlight tester	✓	✓	
Repeater screen	✓	✓	
Camera assembly for visual inspection	✓	✓	
Exhaust emission tester	✓	✓	

DIMENSIONS ON ROAD



DIMENSIONS AT WORK



WEIGHT

3 450 kg

ALPHA65

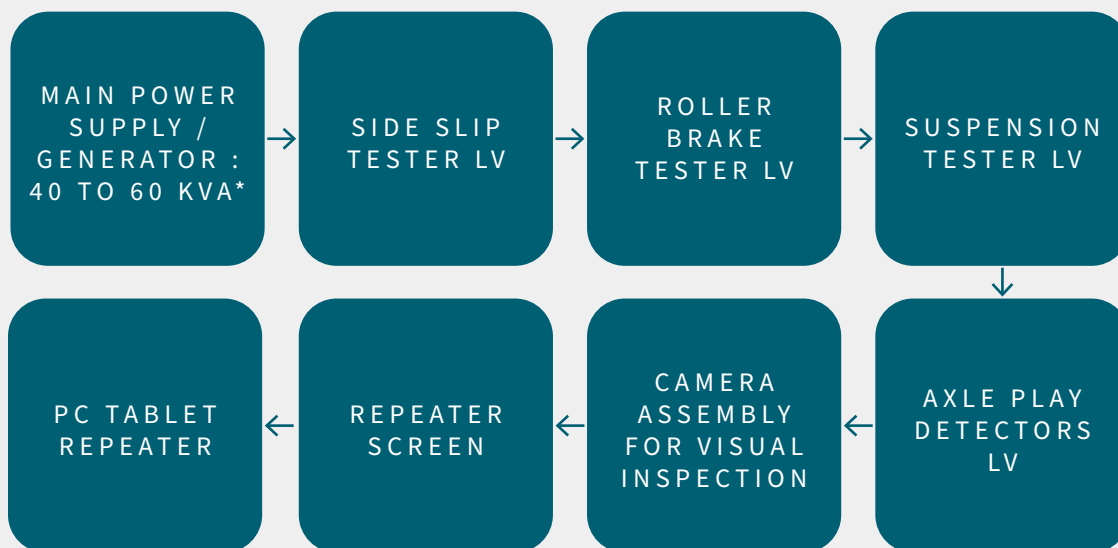
MOBILE STATION 6,5T



This mobile station uses the same deployment kinematics as the ALPHA35. It is equipped with equivalent inspection equipment associated with a more spacious office room and adapted to intensive inspections.



TECHNICAL DATA & BASIC EQUIPMENT



THIS STATION IS COMPOSED OF :

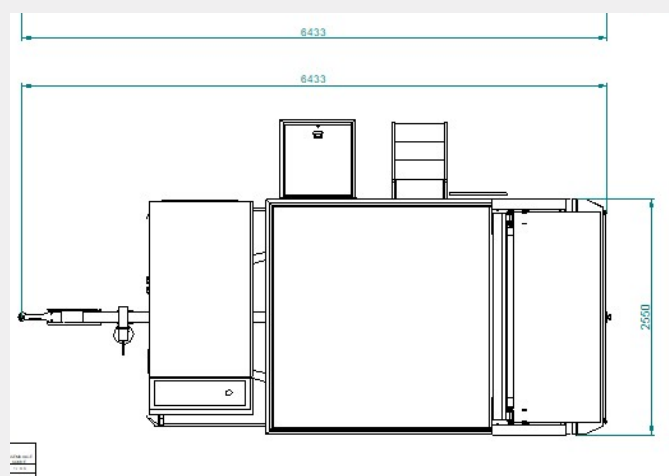
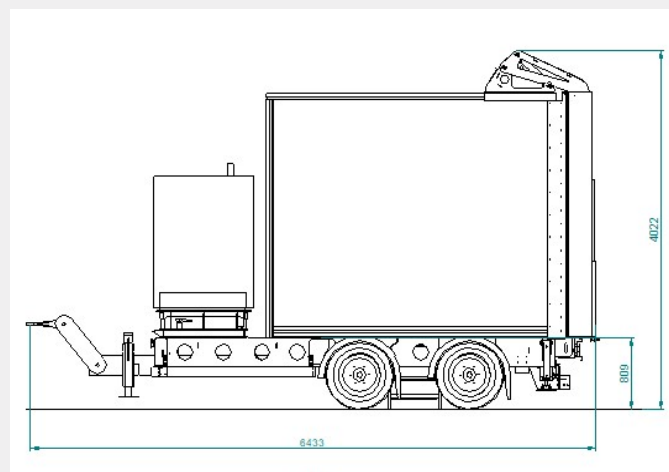
- A technical crossing zone in where the necessary technical inspection equipment is located
- A spacious office room to carry out the administrative tasks required for technical inspection
- All deployment functions are hydraulically controlled by using a wired remote control

* depending on configuration

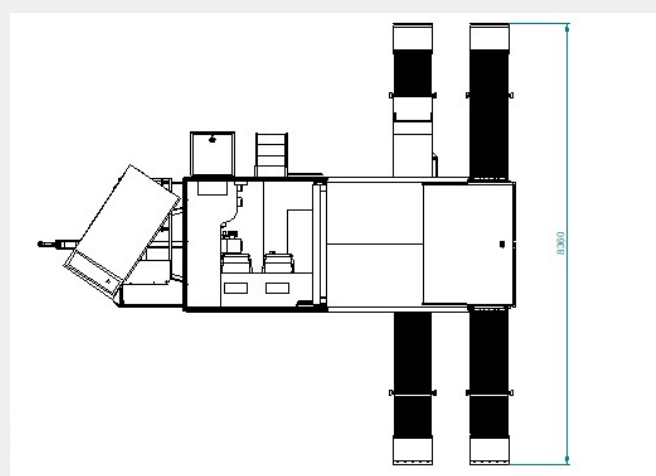
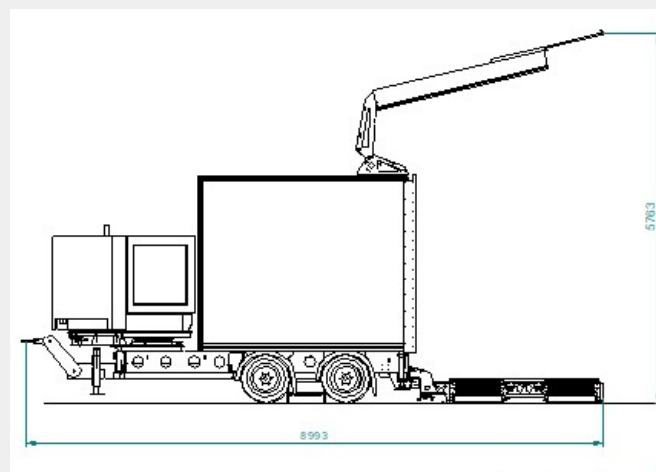
THIS STATION CAN BE EQUIPPED UPON YOUR REQUESTS AND OPTIONS

BASIC EQUIPMENT	3W	LV	HV
Main power supply / Generator 60 KVA		✓	
Roller brake tester		✓	
Suspension tester		✓	
Side slip tester		✓	
Axle play detectors		✓	
PC tablet repeater		✓	
Camera assembly for visual inspection		✓	
OPTIONAL EQUIPMENT	3W	LV	HV
Roller brake tester (Ref. 44803)	✓		
Headlight tester	✓	✓	
Exhaust emission tester	✓	✓	
Repeater screen	✓	✓	

DIMENSIONS ON ROAD



DIMENSIONS AT WORK



WEIGHT

6 300 kg

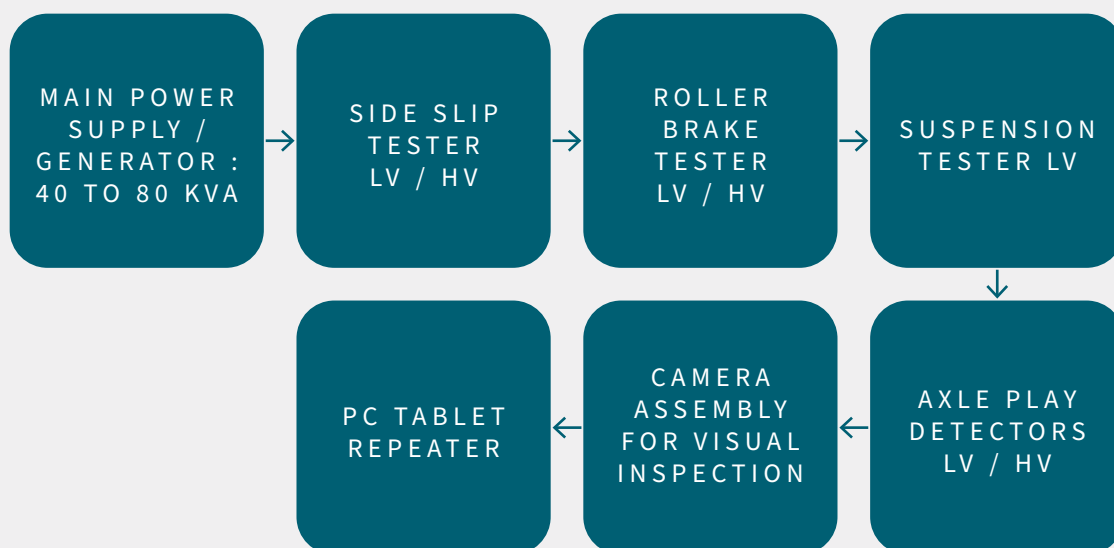
OMEGA150

MOBILE STATION CONTAINER



This container-type station is designed for the inspection of light and heavy vehicles. Transported by a heavy-duty container carrier, it can be placed on the work area and does not require the transport vehicle to be mobilized.

TECHNICAL DATA & BASIC EQUIPMENT



THIS STATION IS COMPOSED OF :

- A technical crossing zone where the necessary technical inspection equipment is located
- A pop-up roof allowing the drive-by of vehicles with height
- All deployment functions are hydraulically controlled by using a wired remote control

FAST

Operational deployment in less than 10 minutes

FLEXIBILITY

Allows the inspection of light and heavy vehicles

ROBUST

Mechanically welded steel platform

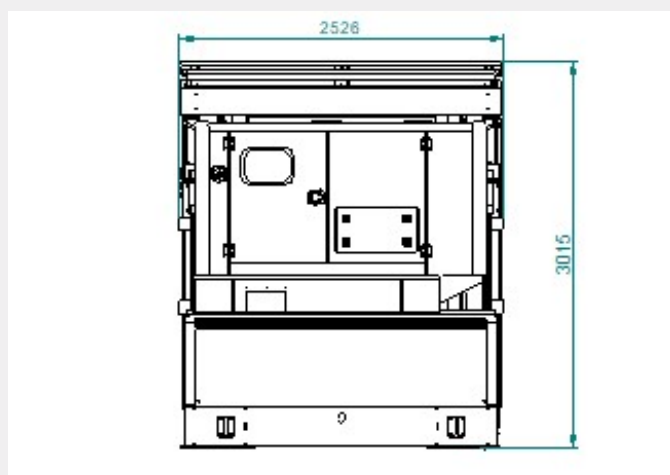
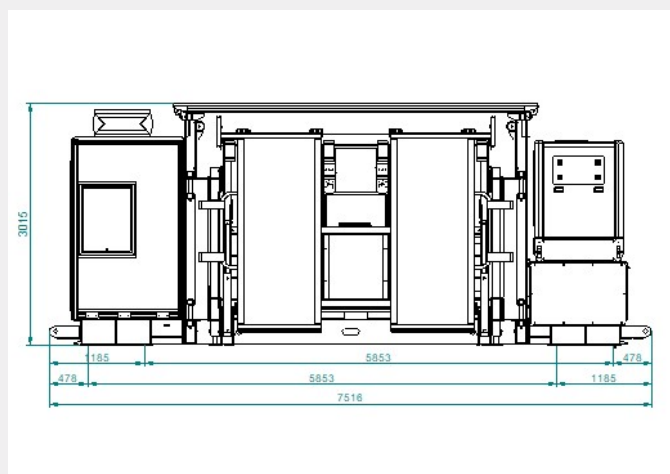
AUTONOMOUS

Generator from 40 to 80 KVA, associated with a 500 to 825 liter tank

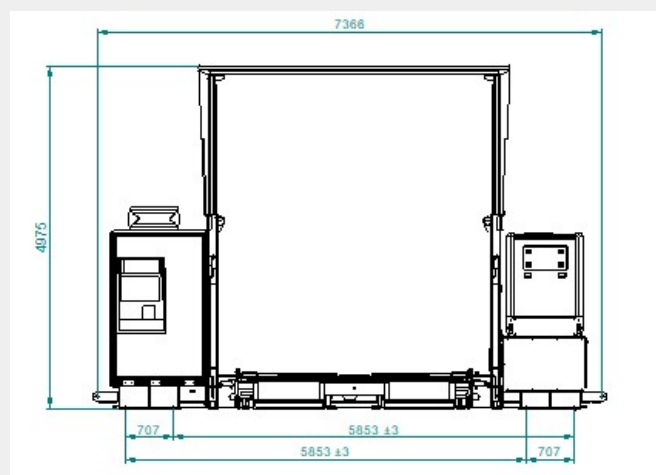
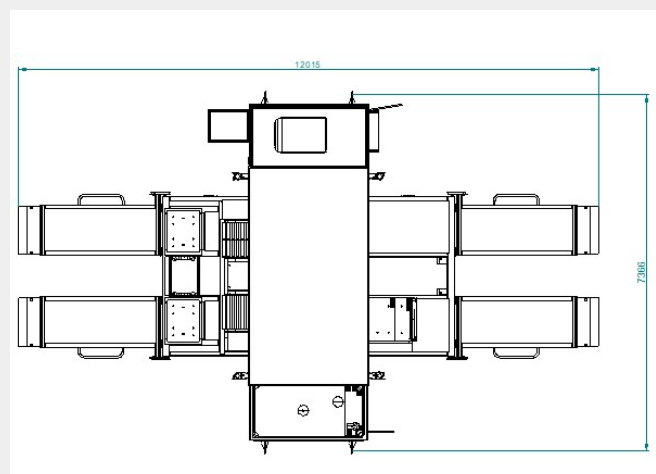
THIS STATION CAN BE EQUIPPED UPON YOUR REQUESTS AND OPTIONS

BASIC EQUIPMENT	3W	LV	HV
Main power supply / Generator from 40 to 80 KVA		✓	✓
Roller brake tester		✓	✓
Side slip tester		✓	✓
Axle play detectors		✓	✓
Camera assembly for visual inspection		✓	✓
PC tablet repeater		✓	✓
Suspension tester		✓	
OPTIONAL EQUIPMENT	3W	LV	HV
Headlight tester		✓	✓
Repeater screen		✓	✓
Exhaust emission tester		✓	✓
Speedometer tesrer		✓	

DIMENSIONS ON ROAD



DIMENSIONS AT WORK



WEIGHT

15 000 kg

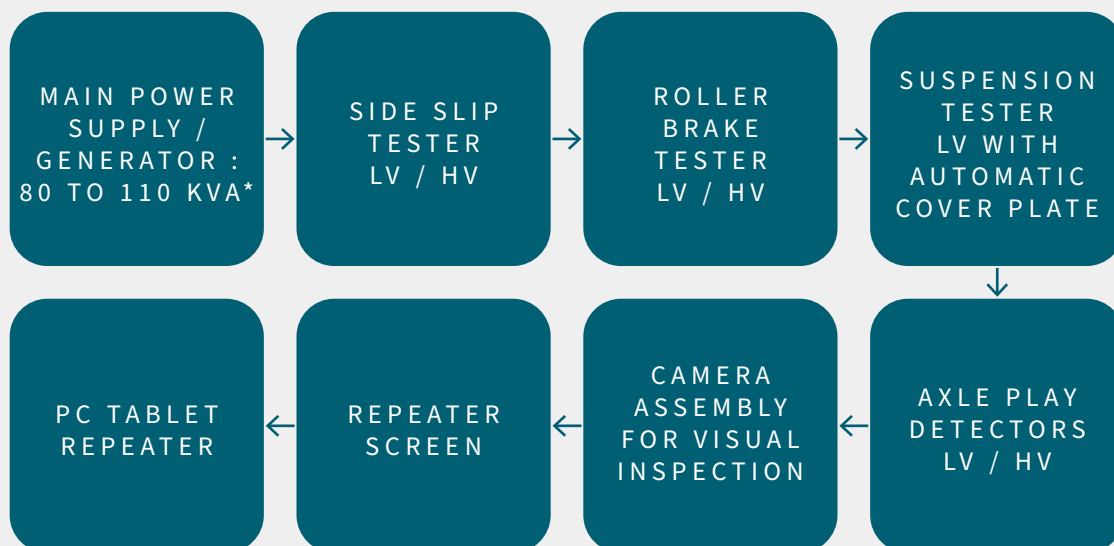
OMEGA330

TRANSVERSAL MOBILE STATION



This semi-trailer type station with transverse passage is designed for the inspection of light vehicles and heavy goods vehicles. Towed by a truck, it can be placed on the work area and does not require the mobilization of the towing vehicle.

TECHNICAL DATA & BASIC EQUIPMENT



THIS STATION IS COMPOSED OF :

- A technical crossing area where the equipment necessary for technical inspection is located.
- A spacious office room to carry out the administrative tasks required for technical inspection
- A pop-up roof allowing the drive-by of vehicles with height
- All deployment functions are controlled hydraulically using a wired remote control.

FAST

Operational deployment in less than 15 minutes

FLEXIBILITY

Allows the control of light vehicles and heavy goods vehicles

ERGONOMIE

Spacious office room and independent technical room

ROBUST

Welded steel platform, double swan neck chassis

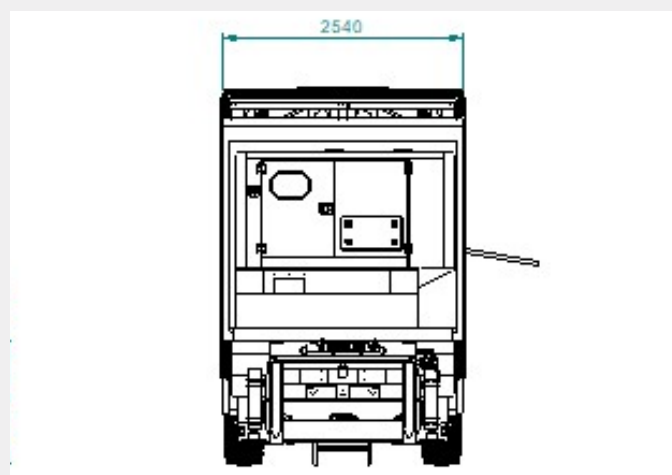
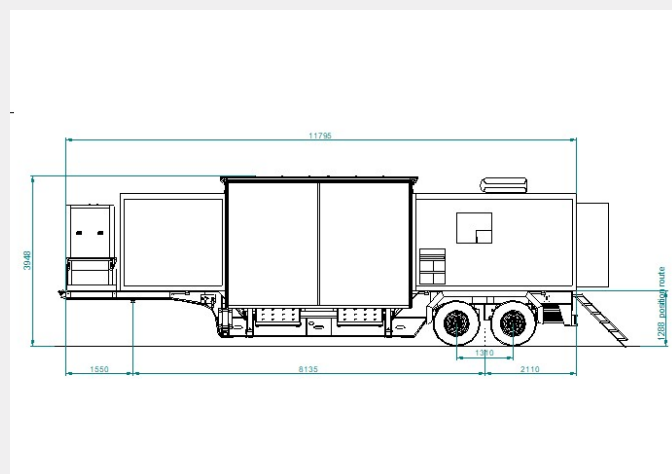
AUTONOMOUS

80 KVA generator set, associated with optional 48h tank

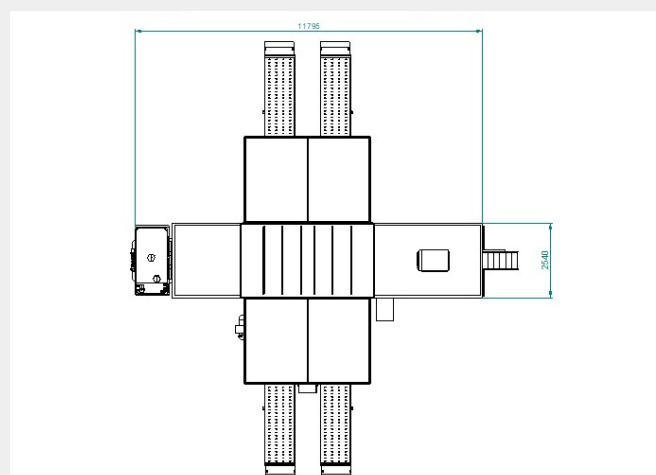
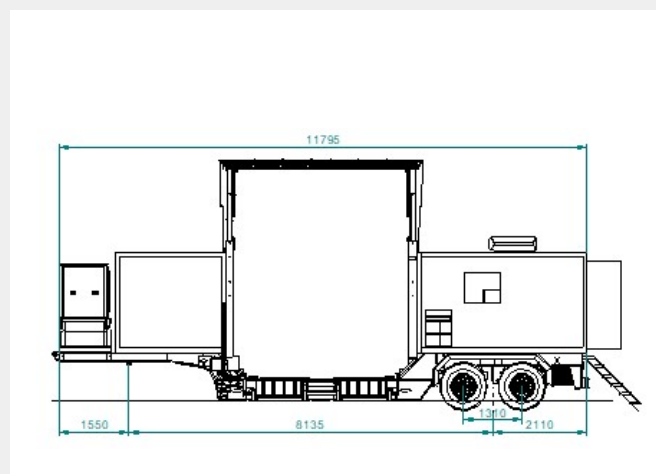
THIS STATION CAN BE EQUIPPED UPON YOUR REQUESTS AND OPTIONS

BASIC EQUIPMENT	3W	LV	HV
Main power supply / Generator 80 KVA		✓	✓
Roller brake tester			✓
Side slip tester			✓
axle play detectors			✓
Camera assembly for visual inspection		✓	✓
PC tablet repeater		✓	✓
Suspension tester		✓	
Repeater screen		✓	✓
OPTIONAL EQUIPMENT	3W	LV	HV
Headlight tester		✓	✓
Exhaust emission tester		✓	✓
Speedometer tester		✓	

DIMENSIONS ON ROAD



DIMENSIONS AT WORK



WEIGHT

33 000 kg

SIGMA330

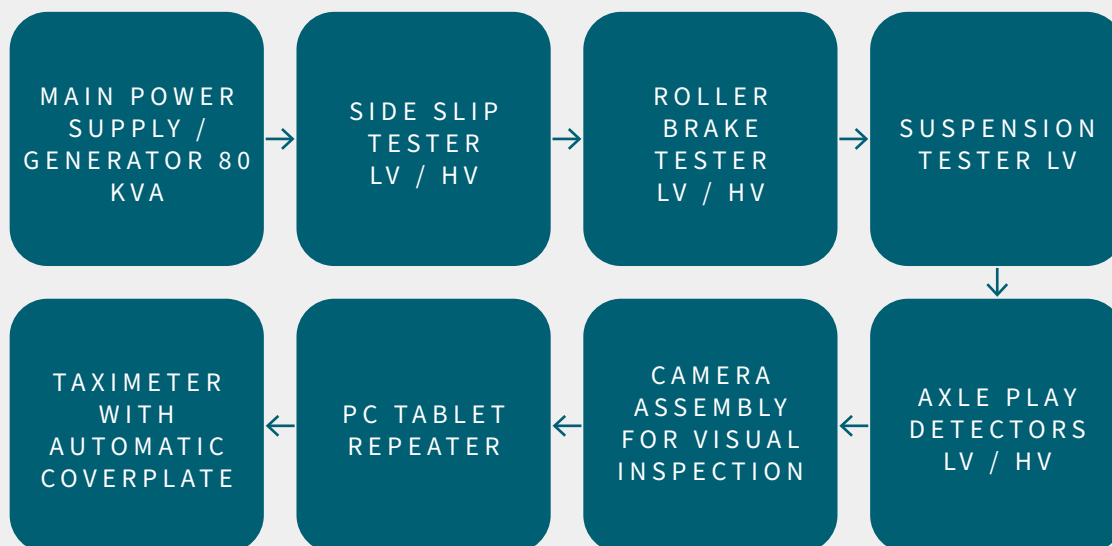
LATERAL MOBILE STATION



This semi-trailer mobile station is equipped with a side drive-by platform. It was designed to adapt to reduced work spaces. It only needs 6 meter of width to deploy the side ramp. It is able to perform inspections on light and heavy duty vehicles.

It is towed by a truck and can be left on the area, it does not require the towing vehicle during the inspection phase. Like all our mobile stations, it is equipped with a generator, thus it is completely autonomous.

TECHNICAL DATA & BASIC EQUIPMENT



THIS STATION IS COMPOSED OF :

- A lateral technical area on which the equipment necessary for the vehicle inspection is located
- An office room in which a waiting area / customer reception can be associated
- All deployment functions are hydraulically controlled using a wired remote control.

FAST

Operational deployment in less than 10 minutes

ADAPTATIVE

Allows the inspection of light and duty vehicles

ERGONOMICS

Spacious office room of approximately 15m²

ROBUST

Platform and chassis in welded steel with a large section

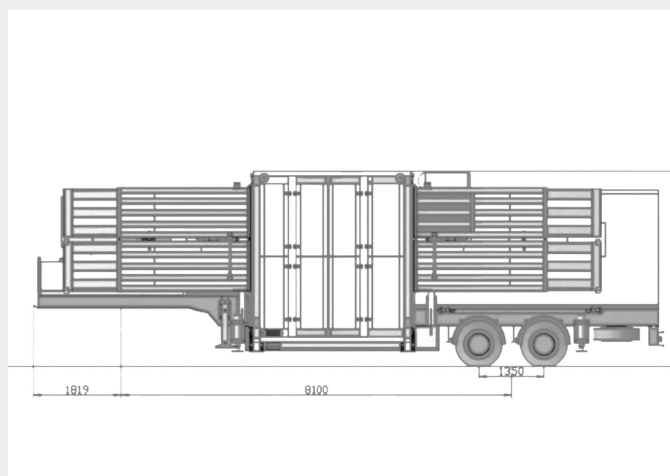
AUTONOMOUS

80 KVA generator with a 500 to 825 liter tank, 48h tank in option

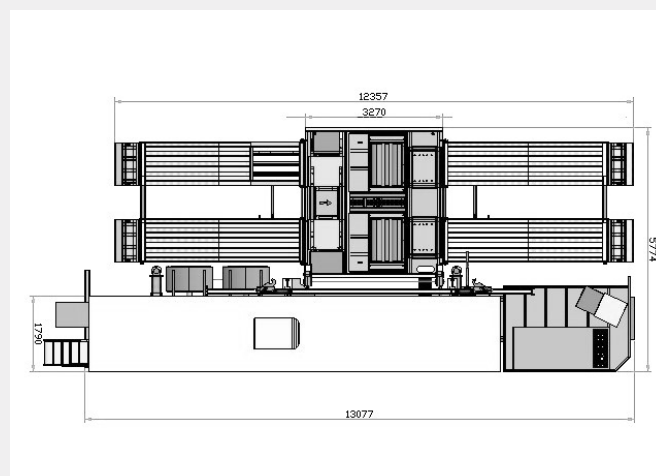
THIS STATION CAN BE EQUIPPED UPON YOUR REQUESTS AND OPTIONS

BASIC EQUIPMENT	3W	LV	HV
Main power supply / Generator 80 KVA up to 110 KVA		✓	✓
Roller brake tester		✓	✓
Side slip tester		✓	✓
Axle play detectors		✓	✓
Camera assembly for visual inspection		✓	✓
PC tablet repeater		✓	✓
Suspension tester		✓	
Repeater screen		✓	✓
OPTIONAL EQUIPMENT	3W	LV	HV
Headlight tester	✓	✓	✓
Exhaust emission tester	✓	✓	✓
Speedometer tester	✓	✓	

DIMENSIONS ON ROAD



DIMENSIONS AT WORK



WEIGHT

33000 kg

VEHICLE LIFTING

FOG

Vehicle lifting specialist since 1929

104



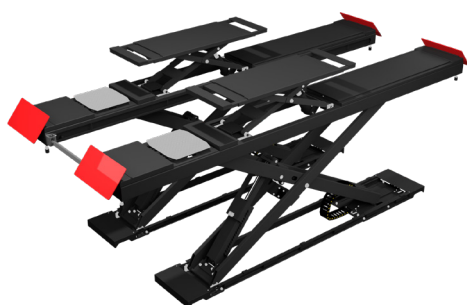
108



4-POST LIFTS

MOTORCYCLES & 3/4
WHEELERS LIFTS
(CATEGORY «L»)

110



SCISSOR LIFTS

114



ACCESSORIES

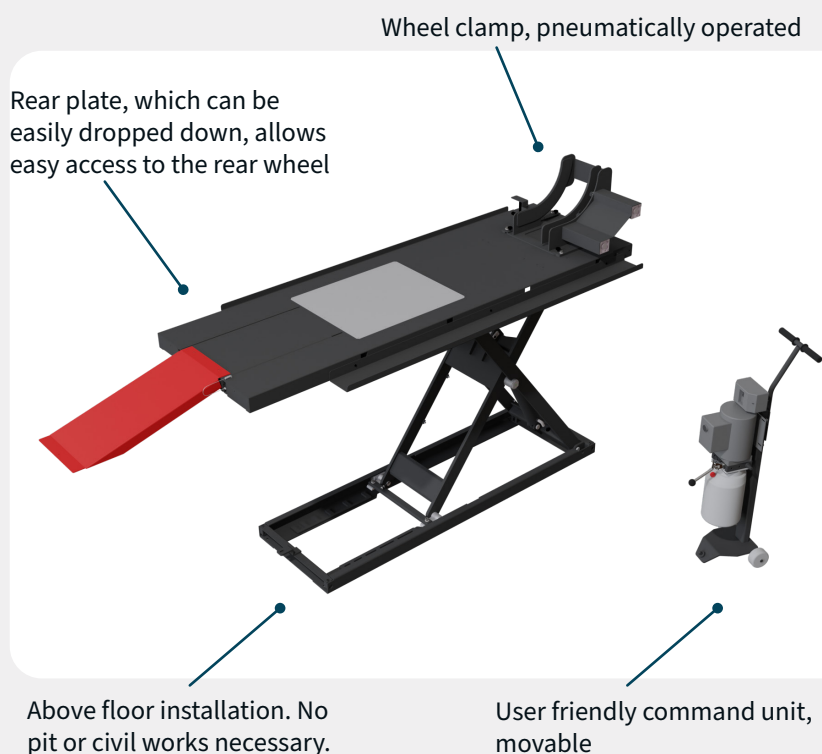
MULLER
AUTOMOTIVE

French equipment manufacturer for
vehicle inspection

*A wide range of 2-post lifts and under body scissor lifts, is available at :
www.mullerautomotive.fr*

AGILA2PH

MOTORCYCLE LIFT FOR VEHICLE INSPECTION,
CATEGORY OF VEHICLES : L1, L3



Ultimate lifting solution to cover any requirement in vehicle inspection (european category L).

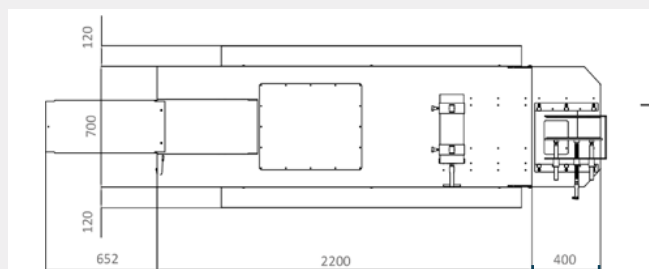
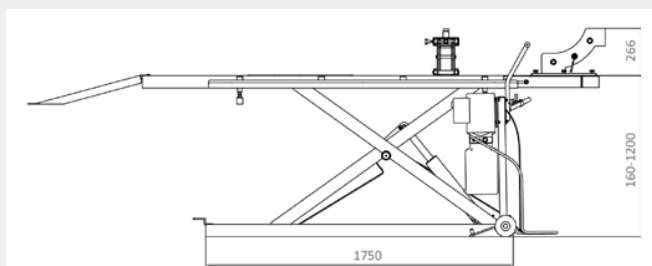
This lift features an electro-hydraulic drive system, with power pack located in the mobile command unit, providing smooth, silent, and quick working operations (raising time : 30 seconds).

The space saving configuration allows perfect access all around the lift to the vehicle, with the possibility for the inspector to stand very near to raised vehicle. This specification is ideal for vehicle inspection activities.



SPECIFICATIONS	AGILA2PH
Lifting capacity	1000 kg
Drive	Electrohydraulic
Min. height	160 mm
Max. lifting height	1200 mm
Lifting platform length	2200 mm
Lifting platform width	700 mm
Lifting / lowering time	30 sec. / 30 sec.
Air supply	6-8 bars
Power supply / E-motor power	230V / 1ph / 50 Hz / 2,2kW
Net weight	335 kg
Conformity to standard	CE

DIMENSIONS (IN MM)



Option : front platform extension

- Electro-hydraulic drive system, with power pump unit located in the command unit, providing smooth, silent and quick operations. A mechanical safety latching device, with locking positions every 10 cm, automatically sets in safe position once the movement stops. Air supplied unlocking device will automatically operate once the lift gets lowered.
- The AGILA2PH provides perfect access all around the vehicle in raised position. Lateral platform extensions, primarily designed for foot protection, are also useful as tool trays.
- The area for the crutch is mechanically reinforced & fitted with an anti-skid additional plate, ensuring better durability and a better ease of use.
- Lateral sides of the platform, can receive safety strap hooks, to clamp the motorcycle to the lift platform for safety reasons. Receptacles for safety strap, located at regular intervals, allows convenient and quick installation of safety straps (safety straps are optional).

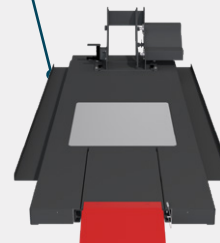


INCLUDED ACCESSORIES

Pneumatic front wheel clamp



Tool trays, lateral sides



STANDARD EQUIPMENT

AGILA2PH

Electro-hydraulic drive with power unit in the command unit	standard
1x lifting platform with scissor lifting device	standard
1 drive-in/out ramp, which becomes automatic safety wheel stopper once the lift has raised	standard
Power unit can be positioned at a max. Distance of 1 meter from the lift	standard
Removable wheel clamp, pneumatically operated, with safety anti-release system.	standard

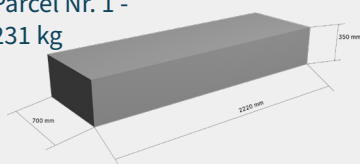
OPTIONAL ACCESSORIES

REFERENCES

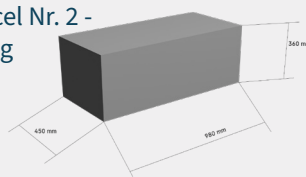
Jacking beam 500 kg	TRAV1M
Lifting platform front extension (+400 mm), tiltable	KITEXT2PH

PACKAGING

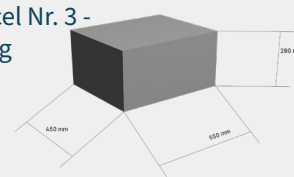
Parcel Nr. 1 -
231 kg



Parcel Nr. 2 -
40 kg



Parcel Nr. 3 -
21 kg



AGILA234EH

DOUBLE LIFTING PLATFORM, FOR 2, 3, 4 WHEELERS VEHICLES,
FOR VEHICLE INSPECTION - **VEHICLES CATEGORY L**



Drop down inspection
rear plate

Wheel clamp

2 lifting platforms with
raising scissor mechanisms

Ergonomic control unit

This double scissor lifting platform, meets the requirements for vehicle inspection of vehicles (2, 3 and 4 wheelers, such as motorbikes, side-cars, quads...).

One advantage of this double platform lift is provided by the fact it can accommodate the full range of vehicles (2, 3 and 4 wheelers).

Its innovative design offers a full access to the vehicle all around the lift, whichever type of vehicle has been raised.



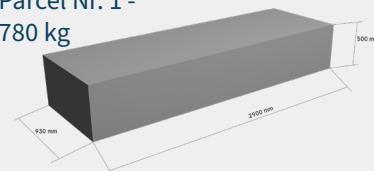
GENERAL SPECIFICATIONS

AGILA234EH

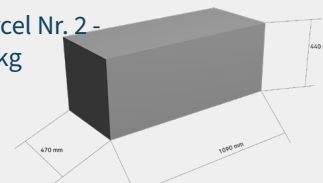
Lifting capacity (single platform mode)	860 kg
Lifting capacity (double platform mode)	1500 kg
Platform length	2800 mm
Overall width of the lift	1700 mm
Lifting time/lowering time	25 sec. / 30 sec.
Max. Oil pressure	250 bars
Air supply (for the wheel clamp supply)	6 - 8 bars
Power supply - E-motor power	400 V / 3 ph / 50 Hz / 3,5 kW
Net weight	860 kg
Conformity to standard	CE

PACKAGING

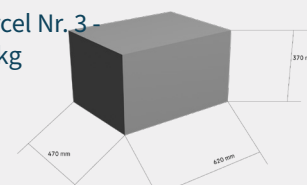
Parcel Nr. 1 -
780 kg



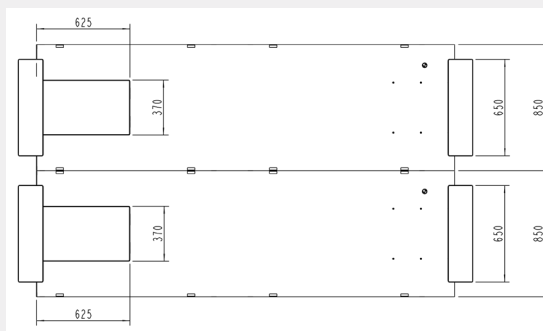
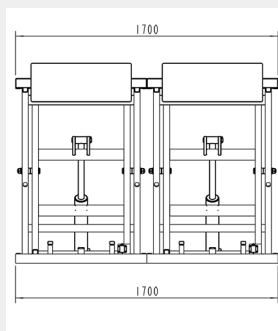
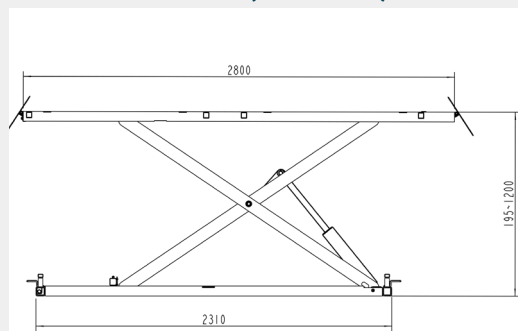
Parcel Nr. 2 -
75 kg



Parcel Nr. 3 -
25 kg



DIMENSIONS (IN MM)

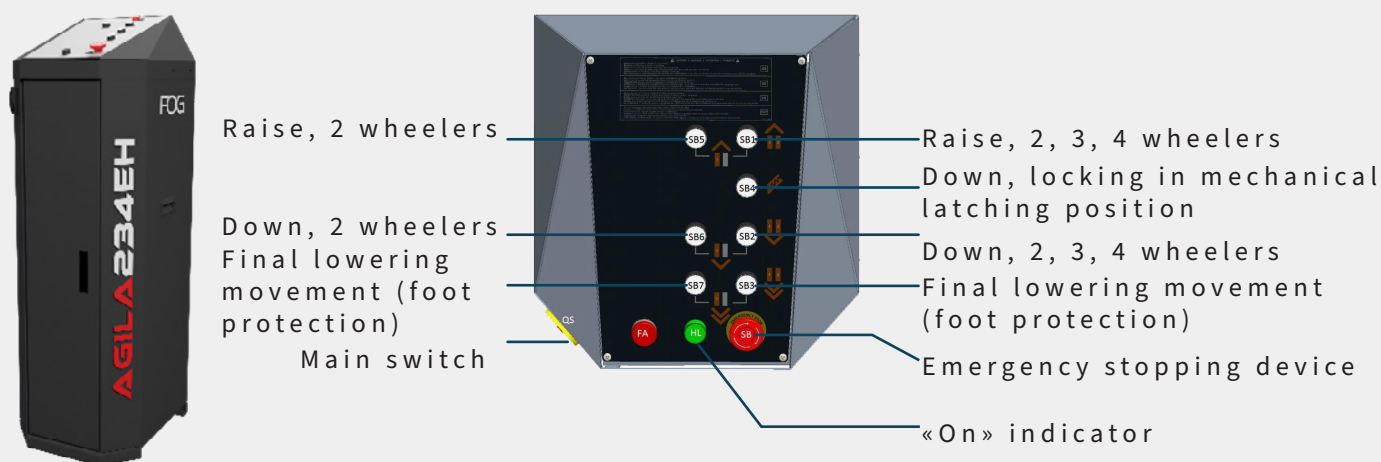


The lift is suitable for all vehicles covered in the «category L»:

- 2 wheelers : Motorcycles, scooters, moped...
- 3 wheelers : MP3, Trikes, can-am, side-cars...
- 4 wheelers : quads, buggies, cart, small cars...



Control box, user-friendly, with control panel located at ideal height. All controls don't require any physical effort (only push buttons), with functions that are logical



The lifting platforms are equipped with safety latching device, with automatic locking function, and lowering phase in two steps for foot protection, in accordance with European standards.

STANDARD EQUIPMENT	AGILA234EH
Electro-hydraulic drive system with power unit located in the command unit	standard
2 lifting platforms, working independently or synchronized. Scissor lifting mechanisms.	standard
4 drive-in/out ramps, with automatic «wheel stopper» function, once lift has raised	standard
Oil hoses length for max. distance 2 meters between lift and command unit	standard
Removable pneumatic wheel clamp, with remote command pedal, easy to be activated, even for a user riding a motorbike	standard
OPTIONAL EQUIPMENTS	REFERENCES
Jacking beam 500 kg	TRAV1M
Set of 2 long drive-in/out ramps, with oil hoses covers, for above ground installation of lift (without pit)	A5R

QUADRA552LA

4-POST LIFT 5T WITH HIGH ACCURACY



Inserts for turntables

No electronic board -
Maintenance friendly

User friendly command unit

Rear side slip plates

Our 4-post lifts feature high quality and perfect finishes.

Their advanced technical specifications allow raising of all types of light vehicles and most commercial vehicles.

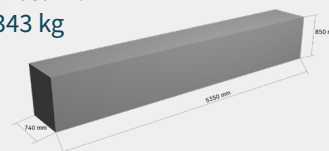
As all our lifts, the QUADRA552LA is CE certified.

**TECHNICAL SPECIFICATIONS****QUADRA552LA**

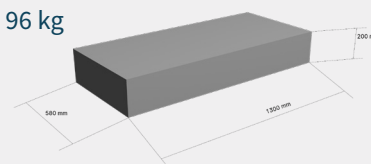
Main lift capacity	5000 kg
Auxiliary lift capacity	4000 kg
Main runways, length	5280 mm
Main runways, width	630 mm
Overall length (on the ground)	6370 mm
Raising/lowering time - Lift loaded	60 sec. / 55 sec.
Raising/lowering time - auxiliary lift	25 sec. / 20sec.
Max. raising height	1850 mm
Max. raising height - auxiliary lift	425 mm
Power supply - Motor power	400 V / 3 ph / 50 Hz / 16 A / 2,2 kW
Max. oil pressure	180 bars
Net weigh	2313 kg

PACKAGING

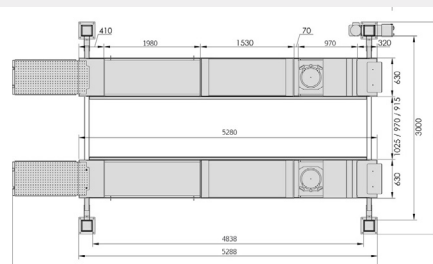
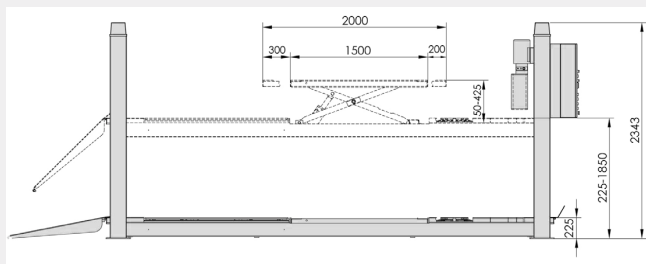
Parcel Nr.1 -
2343 kg



Parcel Nr.2 -
96 kg

**ACCESSORIES**

See page 114

DIMENSION SCHEME (IN MM)

QUADRA558LA

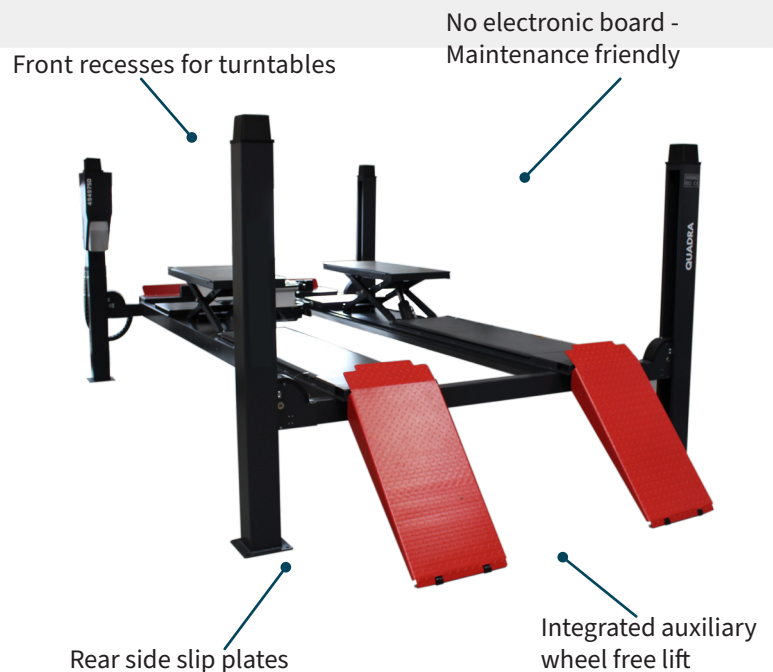
4-POST LIFT 5T, HIGH ACCURACY



As the QUADRA552LA, the QUADRA558LA also features a perfect finish. Hoses and wires from command unit to the runways, are routed into a plastic articulated chain providing also better reliability.

The QUADRA558LA, features longer runways than the QUADRA522LA, it allows working on vehicles with longer wheelbases.

The integrated auxiliary wheel-free offers adjustable lifting platforms - with front and rear extensions - to fit every vehicles.



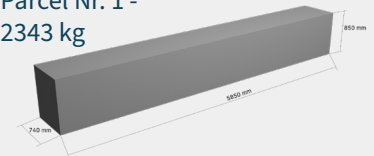
GENERAL SPECIFICATIONS

QUADRA558LA

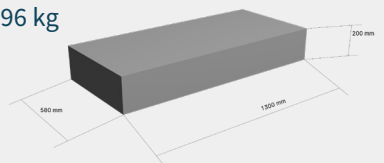
Main lift capacity	5 000 kg
Auxiliary lift capacity	4 000 kg
Runways, length	5780 mm
Runways, width	630 mm
Overall length (on the ground)	6870 mm
Lifting/lowering time - lift loaded	60 sec. / 55 sec.
Lifting/lowering time - auxiliary lift	25 sec. / 20sec.
Max. lifting height - main lift	1850 mm
Max. lifting height - auxiliary lift	425 mm
Power supply - motor power	400 V / 3 ph / 50 Hz / 16 A / 2,2 kW
Max. Oil pressure	180 bars
Net weight	2400 kg

PACKAGING

Parcel Nr. 1 -
2343 kg



Parcel Nr. 2 -
96 kg

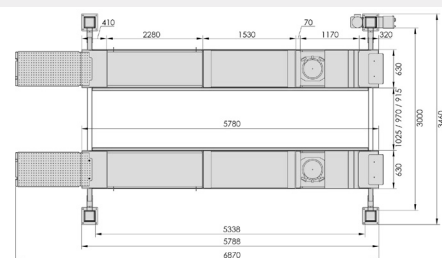
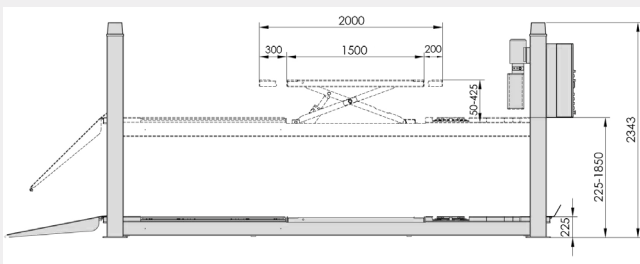


ACCESSORIES



See page 114

DIMENSIONS (IN MM)



GALAXIE551ELA

SCISSOR LIFT 5T WITH LIFTING RUNWAYS AND
AUXILIARY WHEEL-FREE LIFT



The GALAXIE551ELA is a 5T scissor lift with long runways (main lift) and under body lift (auxiliary lift).

Recessed in a pit, the flush mounted runways can accommodate vehicles with very low ground clearance.

This flushed mounted configuration saves space in the workshop.

Optional long drive-in ramps allow above ground installation (without the need of a pit), if required.



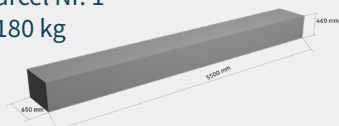
GENERAL SPECIFICATIONS

GALAXIE551ELA

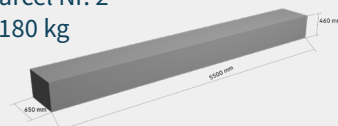
Main lift capacity	5000 kg
Auxiliary lift capacity	3500 kg
Main runways, length	5100 mm
Main runways, width	610 mm
Lifting/lowering time - Loaded lift	70 sec. / 50 sec.
Max. lifting height - main lift	2060 mm
Max. lifting height - auxiliary lift	450 mm
Power supply - Motor power	400 V / 3 ph / 50 Hz / 16 A / 2,2 kW
Max. oil pressure - main lift	250 bars
Max. oil pressure - auxiliary lift	200 bars
Air supply	6 - 8 bars
Net weight	2358 kg

PACKAGING

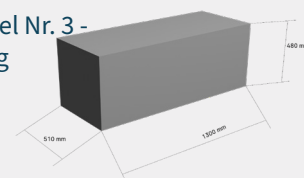
Parcel Nr. 1 -
1180 kg



Parcel Nr. 2 -
1180 kg



Parcel Nr. 3 -
84 kg



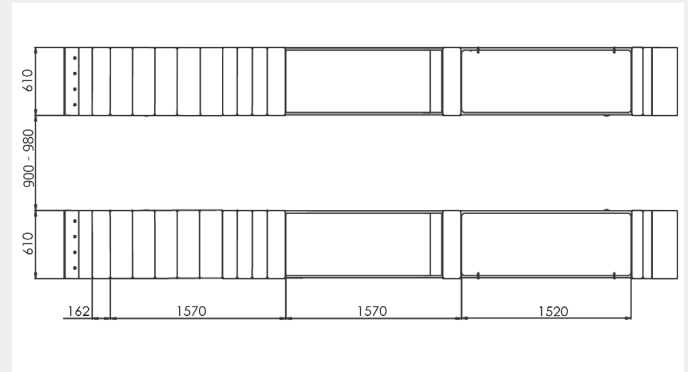
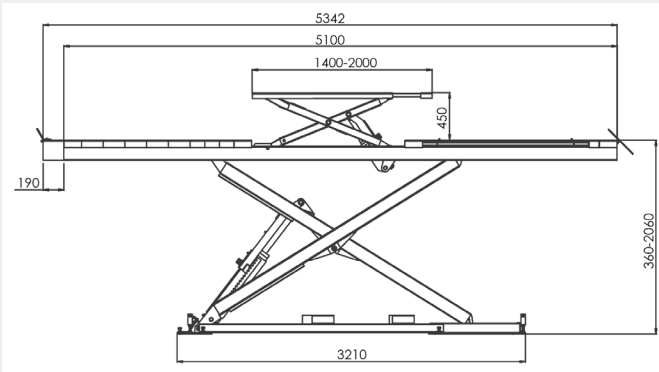
PERFORMANCE

- Safety latching devices with automatic locking in safe position (in conformity with European regulations).
- Leveling of platforms with a full hydraulic system, without mechanical connection, enabling convenient access without obstacles under the lifted vehicles.
- User friendly command unit, located at ideal height for users, enabling command without effort.
- High efficiency lighting kit as standard, featuring 4 LEDs bar units, with magnets, which can be located as wished, with lighting switches.

SAFETY

- Installation and maintenance onsite by our service technicians

DIMENSIONS (IN MM)



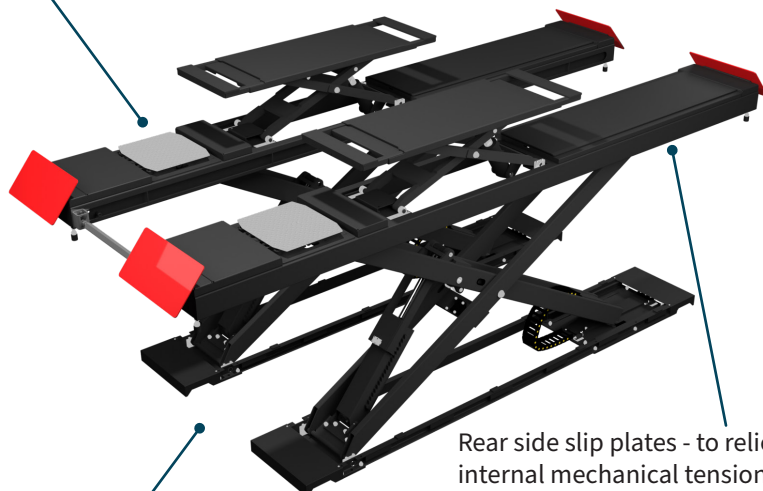
OPTIONAL ACCESSORIES	REFERENCES
Turntables for wheel alignment checks	UB. 7A-J2
Jacking beam 2,6T	4207520 + ACH. 6227600
Jacking beam 3T	TRAV3P
Set of 2 long ramps with hoses covers, for above ground installation	G5R

GALAXIE551ECT

SCISSOR LIFT 5T WITH LONG RUNWAYS, AUXILIARY
WHEEL FREE LIFT AND PLAY DETECTORS



Integrated play detectors, hydraulically operated, with 4 movements



Installation flush mounted

Rear side slip plates - to relieve internal mechanical tensions

This scissor lift GALAXIE551ECT, is especially designed to meet vehicle inspection requirement, meets all expectations of our customers.

Thanks to a lifting capacity of 5T and extra long runways 5,10 m, the GALAXIE551ECT can accommodate almost all, including commercial vans and motorhome.

A super fast raising time is provided thanks to the use of two hydraulic groups working simultaneously.



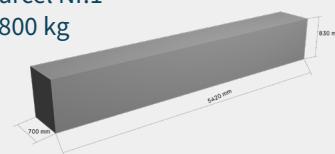
GENERAL SPECIFICATIONS

GALAXIE551ECT

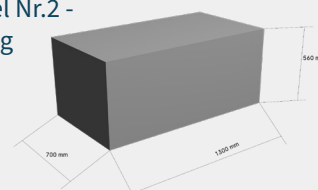
Lifting capacity, main lift	5000 kg
Lifting capacity, auxiliary lift	4000 kg
Main runways, length	5100 mm
Lifting/lowering time, main lift	30 sec. / 30 sec.
Lifting/lowering time, auxiliary lift	10 sec. / 30 sec.
Auxiliary wheel free lift, platforms dimensions	1480 x 2200 mm
Max. oil pressure	250 bars
Air supply	6 - 8 bars
Power supply - Motor power	400 V / 3 ph / 50 Hz / 32 A / 2 x 3,5 kW
Net weight	3050 kg

PACKAGING

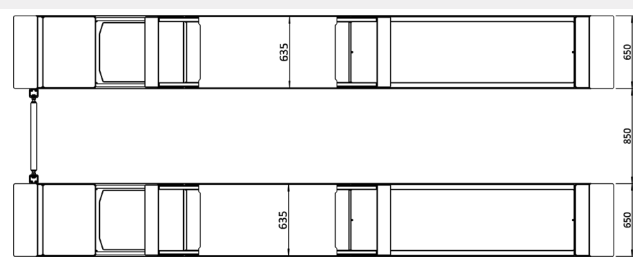
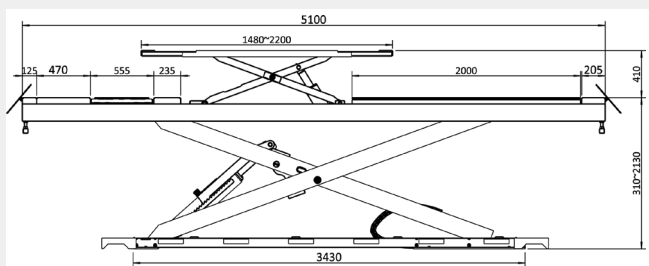
Parcel Nr.1 -
2800 kg



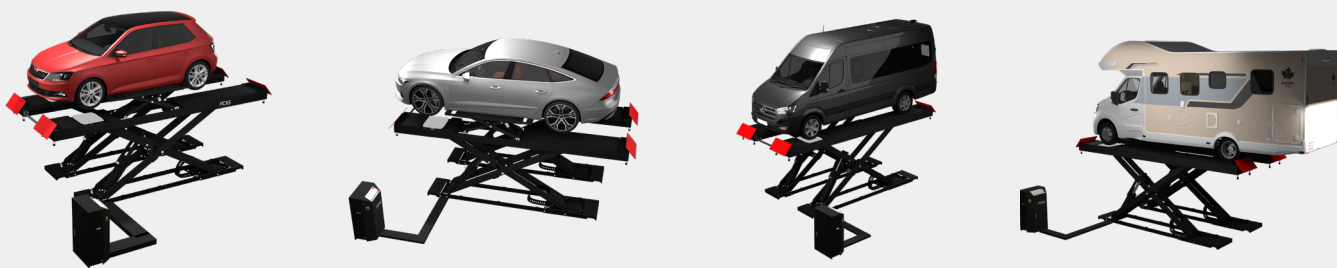
Parcel Nr.2 -
170 kg



DIMENSIONS SCHEMES (IN MM)

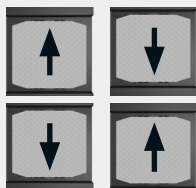


- Suitable for most vehicles, including commercial vans and motorhome vehicles :

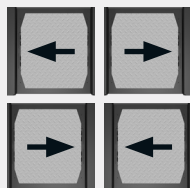


- The 4 movements of the axle play detectors, are activated thanks to a wireless remote control, fitted in a torch lamp with high performance lighting LED.

2 opposite transverse movements



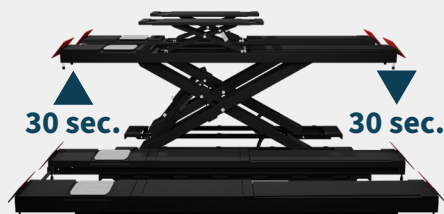
2 opposite longitudinal movements



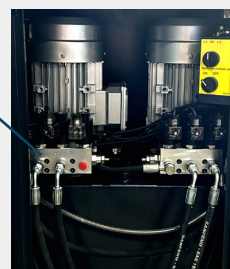
Easy and quick visual detection of excessive plays of:

- Ball joints
- Silent blocs
- Wheel bearings
- Steering
- Bolts and nuts

- Super fast lifting/lowering times, provided by two hydraulic groups working simultaneously

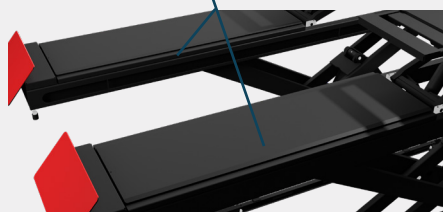


Hydraulic groups

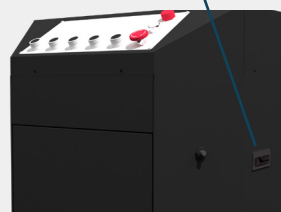


- Rear side slip plates, with remotely operated locking/unlocking

Rear side slip plates



Pneumatic remote command for rear side slip plate locking/unlocking



STANDARD EQUIPMENTS

GALAXIE551ECT

2 hydraulic axle play detectors units, each with 4 combined and opposed movements	standard
LED Torch lamp, wireless, used as command unit for play detector, with charging station on the power unit cabinet	standard
Removable link bar between the 2 runways, for play detectors	standard
Rear side slip plates, with large length 2000 mm, remotely locked/unlocked from the lift command unit	standard
Set of 4 LED lighting units, with magnets, freely adjustables, with switches	standard

OPTIONNAL ACCESSORIES

REFERENCES

Turntables	UB.7A-J2
Jacking beam 2T	4207420 + ACH.6228000
Jacking beam 2,6T	4207520 + ACH. 672000
Jacking beam 3T	TRAV3PCT
Set of 2 long drive-in ramps for above ground installation	G5RCT

ACCESSORIES



JACKING BEAMS.....115

OPTIONAL EQUIPMENT.....116

MOTORCYCLE EQUIPMENT.....117

4207420

JACKING BEAMS 2 T



4207520

JACKING BEAMS 2,6 T

Jacking beams are necessary to raise up vehicles wheel free under front or rear axle.

Those jacking beams are designed to run between the two platforms of the lift, or in a pit, to be positioned exactly under the vehicle's axle to be raised.

The lifting movement is done by an hydraulic lifting cylinder, with oil pressure created by an air-hydraulic motor integrated in the jacking beam. The jacking beam is only air supplied (no power), and features safety latching and safety overloading devices. The lowering movement requires two hands for safety reason, with a «hold to run» command.



TECHNICAL DATA	4207420	4207520
Lifting capacity	2 000 kg	2 600 kg
Net weight	110 kg	110 kg
Air pressure	8 - 10 bars	8 - 10 bars
Min. lifting arm length	780 mm	780 mm
Max. Lifting arm length	1 610 mm	1610 mm
Min. width of the chassis (without lift adapter)	780 mm	780 mm
Max. width of the chassis (without lift adapter)	1 180 mm	1180 mm
Max. Lifting height	250 mm	250 mm
Lift or pit adapter	to be determined according to the pit / lift	

FIT YOUR LIFT OR PIT

A wide range of optional pit/lift adapters, make the jacking beam fully compatible with different models of lifts or pits equipped with guiding rails

STANDARD EQUIPMENT

Set of 2 pad spacers - 45 & 90 mm

Set of 2 rubber lifting pads - 10 mm



FOR QUADRA552LA & QUADRA558LA

OPTIONNAL ACCESSORIES

Ref. 4207420	2T Jacking beam without running wheels
Ref. 4207520	2,6T jacking beam without running wheels
Ref. ACH.6227600	Running wheels
Ref. QKITECL	LED lighting kit with 4 light bars
Ref. EV.614901637	1x access ramp, short, for recessed installation. flush-mounted. 2x pieces to order for single access; 4x pieces to order for double access

MOTORCYCLE LIFTING CRANE Ref. PORT350



Capacity 350 kg*

Compatible with AGILA2PH & AGILA234EH

(*) : lifting straps not in standard supply

SUMMARY OF OPTIONAL EQUIPMENTS

OPTIONNAL EQUIPMENTS		COMPATIBLE WITH	REFERENCES
Manual jacking beam 500 kg		AGILA2PH AGILA234EH	TRAV1M
Lifting crane 350 kg		AGILA2PH AGILA234EH	PORT350
Tilting front runway extension		AGILA2PH	EXT2PH
Set of 2 drive-in ramps for above-ground installation		AGILA234EH	A5R
Jacking beam 2T		GALAXIE551ECT GALAXIE551ELA	4207420-ACH.6227600
Jacking beam 2,6T		GALAXIE551ECT GALAXIE551ELA	4207520+ACH.6227600
Jacking beam 3T		GALAXIE551ELA QUADRA552LA QUADRA558LA	TRAV3P
Jacking beam 3T		GALAXIE551ECT	TRAV3PCT
Set of 2 drive-in ramps for above ground installation		GALAXIE551ELA	G5R
Set of 2 drive-in ramps for above ground installation		GALAXIE551ECT	G5RCT
Turntables for wheel alignment checks		GALAXIE551ECT GALAXIE551ELA QUADRA552LA QUADRA558LA	UB.7A-J2

FOR MOTORBIKES



UNIVERSAL REAR STAND

Ref. BEQAR01



OPTIONNAL ACCESSORY

Ref. BEQARADAPTA	1 set of 2 flat lifting supports
------------------	----------------------------------



REAR STAND FOR SINGLE ARM FORK



Réf. : **BEQARMG** - Rear stand for left side single arm fork



Réf. : **BEQARMD** - Rear stand for right side single arm fork

OPTIONNAL ACCESSORIES

Ref. BEQKITARM10	1 set of 10 adapters, comprising :
Ref. BEQARMAXEA	Adapter 27,4 mm TRIUMPH, KTM
Ref. BEQARMAXEB	Adapter 53 mm BMW
Ref. BEQARMAXED	Adapter 40,7 mm 1098/MV
Ref. BEQARMAXEE	Adapter 30,5 mm BMW F800
Ref. BEQARMAXEF	Adapter 42,5 mm MV
Ref. BEQARMAXEG	Adapter 31 mm HONDA
Ref. BEQARMAXEH	Adapter 25,8 / 21,7 mm DUCATI
Ref. BEQARMAXEI	Adapter 28,4 mm HONDA
Ref. BEQARMAXEJ	Adapter 52 mm
Ref. BEQARMAXEK	Adapter 38,5 mm DUCATI

FRONT STAND

Ref. BEQAV01



OPTIONNAL ACCESSORIES

Ref. BEQAVPIN13(*)	Adapter 13 mm	Ref. BEQAVPIN20	Adapter 20 mm
Ref. BEQAVPIN15(*)	Adapter 15 mm	Ref. BEQAVPIN21	Adapter 21 mm
Ref. BEQAVPIN16(*)	Adapter 16,5 mm	Ref. BEQAVPIN23	Adapter 23 mm
Ref. BEQAVPIN17(*)	Adapter 17 mm	Ref. BEQAVPIN24	Adapter 24 mm
Ref. BEQAVPIN18(*)	Adapter 18 mm	Ref. BEQAVPIN27	Adapter 27 mm
Ref. BEQAVPIN19	Adapter 19 mm	Ref. BEQAVPIN28	Adapter 28,4 mm

(*) : standard supply with front stand BEQAV01

FRONT WHEEL CLAMP

Ref. BEQBR01



MANUAL SCISSOR JACKING BEAM Ref. TRAV1M





VIMS GENERAL OVERVIEW.....	119
PRESENTATION OF THE MODULES.....	120



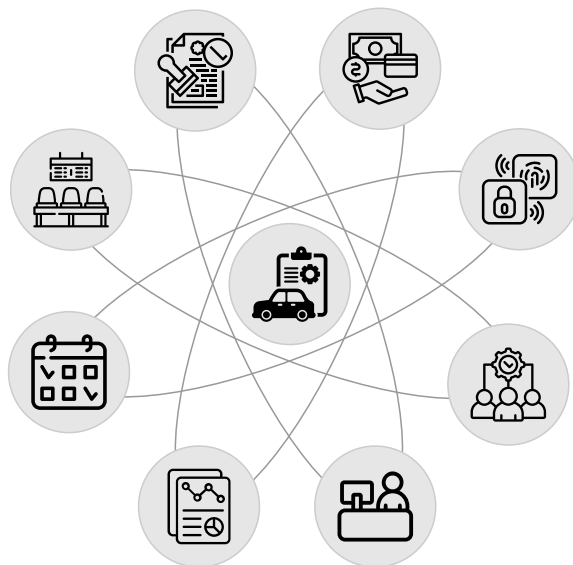
SOFTWARE FOR INSPECTION CENTER MANAGEMENT Vehicule Inspection Management System



MULLER AUTOMOTIVE presents its well known VIMS management solution for PTI centers. The software has been newly redesigned to take in account the latest requirements of the PTI activities.

You can have the software configured to your exact needs, from configuration of your test lanes, up to printed test report configuration, or configuration of the inspection steps.

The VIMS' versatility will surprise you.



VIMS OBJECTIVES

VIMS'S PURPOSES :

- To ensure efficiency and financial profits of the PTI center (or the network of PTI centers) using VIMS, by providing automatic procedures to perform the test activities themselves, as well as data archiving, processing and follow-up.
- To ensure your business compliance with standards and legal requirements
- To guarantee your inspection activity against data tampering

A CUSTOMIZED SOLUTION

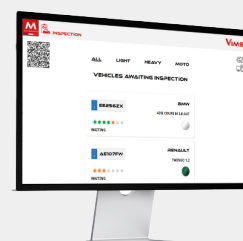
The VIMS modular solution is highly customizable, thus versatile.

Just choose among the different proposed modules those ones which fit the exact needs of your activity. Additional modules can always be added later on. You can also let us know your specific requirements for advises, or special developments.

Each module conforms the country specific regulation.

MAIN ADVANTAGES

- Modular design
- Customizable
- Compatible with all O.S systems and all tablets
- It can be installed in «cloud» version, or PC tablets, depending the customer needs.
- Several language can be selected in one same configuration.
- Interconnectivity between the different hardware (computer, tablets), through a QR code system.



THE MODULES FOR MANAGEMENT OF INSPECTION CENTER

MODULE « REGISTER »

- Vehicle registration
- Selection of the different inspection steps to be performed (automatic pre-selection)

Vehicle registration

Vehicle registration - dark display mode

MODULE « INSPECTION »

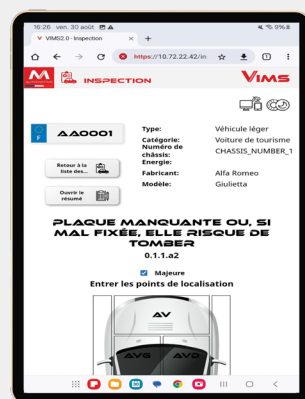
- Display of the current state and performed results of the different inspection steps
- Collection and centralization of the test results provided by the different test benches
- Selection of visual defects

Display of all vehicles to be tested. The vehicles can be sorted in the waiting list, allowing you to adaptation to your immediate needs

Visualization of the successive steps of the vehicle inspection



Visual inspection



Easy input in the system of a visually detected vehicle default, with display of the faulty area

MODULE « SUPERVISION »

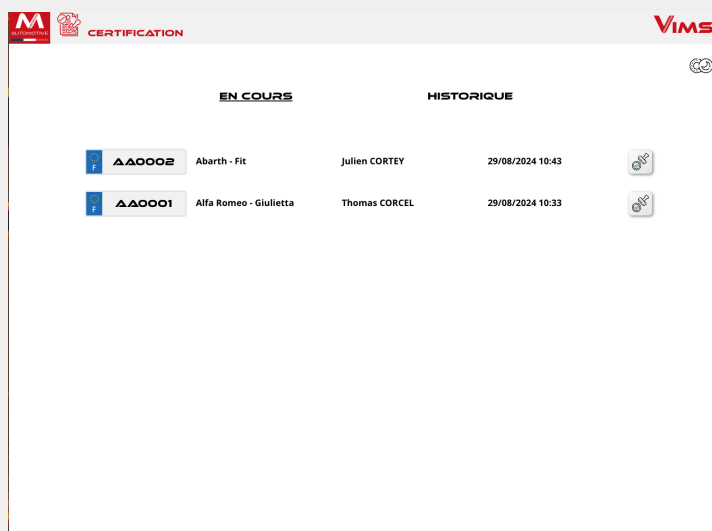
- Monitoring and management of the inspection test lanes activities (checks of the differences between vehicle recorded data and input data, with an alert in the case of issue.

MODULE « LOUNGE »

- External display of the software VIMS for your customers, indicating in real time the current progress of the performed inspection for the vehicles in the batch, with alert in the case of issue.

MODULE « CERTIFICATION »

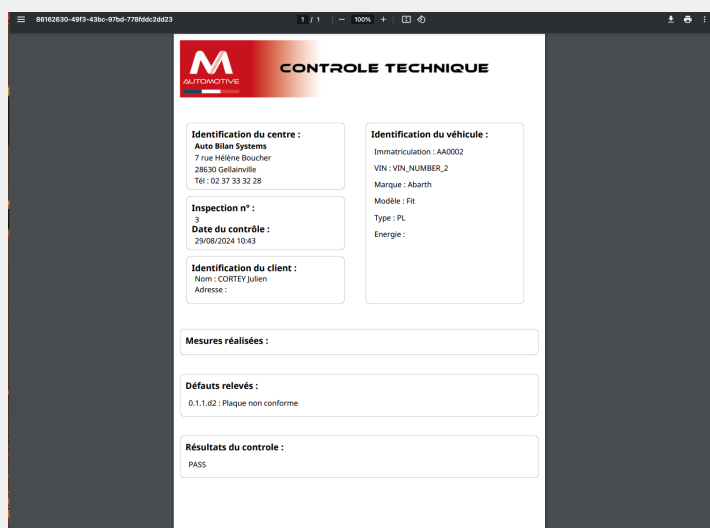
- Automatic transmission of the inspection results
- Printing of the inspection report to be given to the vehicle owner



The screenshot shows the 'CERTIFICATION' module interface. It features a header with the Muller Automotive logo and 'CERTIFICATION' text, and a 'VIMS' logo in the top right. Below the header, there are two tabs: 'EN COURS' (active) and 'HISTORIQUE'. The 'EN COURS' tab displays a table of inspection certificates. Each row includes a license plate, vehicle description, inspector name, date and time, and a status icon.

EN COURS	HISTORIQUE
AA0002 Abarth - Fit	Julien CORTEY 29/08/2024 10:43
AA0001 Alfa Romeo - Giulietta	Thomas CORCEL 29/08/2024 10:33

List of certificates to be printed



The screenshot shows a 'CONTROLE TECHNIQUE' certificate. It contains the following information:

- Identification du centre :** Auto Bilan Systems, 7 rue Hélène Boucher, 28630 Gellainville, Tél : 02 37 33 32 28
- Identification du véhicule :** Immatriculation : AA0002, VIN : VIN_NUMBER_2, Marque : Abarth, Modèle : Fit, Type : PL, Energie :
- Inspection n° :** 3
- Date du contrôle :** 29/08/2024 10:43
- Identification du client :** Nom : CORTEY Julien, Adresse :
- Mesures réalisées :**
- Défauts relevés :** 0.1.1.d2 : Plaque non conforme
- Résultats du contrôle :** PASS

Example of certificate

- To avoid any fraud in the inspection process, MULLER AUTOMOTIVE provides security solutions (TOKEN key for data transmission, fingerprint readers for inspectors, cameras for reading license plates, etc.).

NOTES

[illegible]

MULLER

AUTOMOTIVE



MAKE ROADS SAFER AND CLEANER

The content (texts and photos) of this document is not contractual and is subject to technical developments in particular.



8 RUE RÉAUMUR, JARDIN D'ENTREPRISES, 28000 CHARTRES, FRANCE



+33 (0)2 37 33 34 00



CONTACT@MULLERAUTOMOTIVE.FR



FOLLOW US
@MULLER AUTOMOTIVE

JOIN US
MULLERAUTOMOTIVE.FR

